



Knowledge Co-Creation Program (Group & Region Focus)

GENERAL INFORMATION

**“Practice of Environmental and Social Considerations
for Investment Project Financing”**

課題別研修「開発事業における環境社会配慮実務」

JFY 2019

NO.201984820-J002 / Project ID: 1984820

Program Period in Japan : From November 7 to 29, 2019

This information pertains to one of the JICA Knowledge Co-Creation Program (Group & Region Focus) of the Japan International Cooperation Agency (JICA), which shall be implemented as part of the Official Development Assistance of the Government of Japan based on bilateral agreement between both Governments

‘JICA Knowledge Co-Creation Program (KCCP)’ as a New Start

In the Development Cooperation Charter which was released from the Japanese Cabinet on February 2015, it is clearly pointed out that *“In its development cooperation, Japan has maintained the spirit of jointly creating things that suit partner countries while respecting ownership, intentions and intrinsic characteristics of the country concerned based on a field-oriented approach through dialogue and collaboration. It has also maintained the approach of building reciprocal relationships with developing countries in which both sides learn from each other and grow and develop together.”* We believe that this ‘Knowledge Co-Creation Program’ will serve as a center of mutual learning process.

I. Concept

Background

As one of the measures for sustainable development, Environmental and Social Considerations (ESC) has now become vital to conduct before, during and after a project implementation. ESC is to identify environmental and social impacts of projects and take necessary measures against negative impacts. Therefore, it is crucial for all the countries to apply and implement ESC in an appropriate manner.

This program aims to promote ESC in infrastructure projects in developing countries so as to prevent or minimize negative impacts on the environment and local communities by enhancing the capacity of those engaged in infrastructure development and ESC.

For what?

This program aims to realize that participants obtain fundamental knowledge and deepen their understanding on ESC, and also they enhance their administrative capacity for practicing ESC to implement projects in a smooth and favourable manner. It particularly focuses on anti-pollution measures and natural environment issues, etc.

For whom?

This program is primarily offered to officials in governmental organizations for development and implementation of infrastructure projects. Those involved in Environmental Impact Assessment (EIA) or ESC in environmental regulatory agencies can also apply.

How?

The program provides participants with practical knowledge, techniques and experience through a series of lectures, exercises, discussions and site-visits. Participants are also required to make Action Plan describing what they will implement after their return utilizing their learnings in Japan.

II. Description

1. Title (No.):

Practice of Environmental and Social Considerations for Investment Project Financing (201984820-J002)

2. Period of Program:

Duration of whole program: September 2019 to November 2019

(1) Preliminary Phase: September 2019 to October 2019

(2) Core Phase in Japan: November 7 to 29, 2019

3. Target Countries:

Bolivia, Peru, Sri Lanka and Vietnam

4. Eligible / Target Organization:

The program primarily targets governmental organizations in charge of the infrastructure development. Governmental organizations engaged in Environmental Impact Assessment (EIA) or ESC as environmental regulatory agencies can also apply.

5. Total Number of Participants (upper limit): 5

6. Language to be used in this program: English

7. Program Objective:

Government officials in charge of the infrastructure development will obtain fundamental knowledge and deepen their understanding on ESC, and also enhance their administrative capacity to practice ESC in the real world, particularly in the field of anti-pollution measures and the protection of natural environment.

8. Overall Goal:

ESC is appropriately implemented in infrastructure development projects assisted by JICA on the basis of JICA Guidelines for Environmental and Social Considerations.

9. Expected Module Output and Contents:

(1) Preliminary Phase in Participants' Home Countries	
<ul style="list-style-type: none"> ● From September 2019 to October 2019 ● Participants make required preparation for the Core Phase in their respective countries. 	
Activities	Detail
1. Summarizing your perspectives on ESC	<p>Prepare and submit the following materials to JICA.</p> <p>(1) Inception Report (Word) (<i>*For All Applicants</i>)</p> <p>(2) Presentation Material (PowerPoint) (<i>*For Accepted Candidates Only</i>)</p> <p><i>* Please refer to the attached ANNEXES.</i></p>
2. Deepening your understanding about fundamental concepts of ESC	<p>Read and understand the following documents by downloading them from the websites below.</p> <p>(1) JICA Guidelines for Environmental and Social Considerations [http://www.jica.go.jp/english/our_work/social_environmental/index.html]</p> <p><i>* Supplementary material will be also provided.</i></p> <p>(2) Environmental Impact Assessment in Japan [http://www.env.go.jp/en/policy/assess/pamph.pdf]</p>

(2) Core Phase in Japan

- From November 7 to 29, 2019
- Participants dispatched by their organizations attend the program in Japan.

This program consists of the following components.

Outcome 1

Be able to understand and explain about the concept of ESC, and JICA Guidelines for Environmental and Social Considerations.



Outcome 2

Be able to explain about implementation methods and procedures of ESC in infrastructure development projects.



Outcome 3

Be able to propose concrete measures against issues on ESC in their home countries.



Program Objective

Government officials in charge of the infrastructure development will obtain fundamental knowledge and deepen their understanding on ESC, and also enhance their administrative capacity to practice ESC in the real world, particularly in the field of anti-pollution measures and the protection of natural environment.

<Tentative Plan>

Day	Contents*1	Module Output	Methodology*2	Place
1	Orientation	-	-	Tokyo
2	Inception Report Presentation	3	-	Tokyo
3	- Discussions on case studies in individual countries.	3	D	Tokyo
4	- ESC in Japan and JICA ESC Guidelines - Land acquisition and involuntary resettlement, etc	1	L	Tokyo
5	- Field trip (road)	2,3	L,S	Chiba
6	- Field trip (waste treatment plant)	2,3	L,S	Tokyo
7	- Field trip (wastewater treatment plant) - Field trip (gas-fired power plant)	2,3	L,S	Tokyo Kanagawa
8	- Practices of environmental monitoring (plants & birds)	2,3	P	Tokyo
9	- Practices of environmental monitoring (air & water pollution, noise)	2,3	P	Tokyo
10	- Exercises on scoping and Environmental Management Plan (EMP) - Mid-term review	1,2 1,2,3	E D	Tokyo
11	- Exercises on resettlements	1,2	E	Tokyo
12	Word Bank Session Day1 (Environmental and Social Framework (ESF), etc)	1,2	L,D,E	Tokyo
13	World Bank Session Day2 (Environmental and Social Management Plan (ESMP), etc)	1,2	L,D,E	Tokyo
14	Presentation of Action Plans	3	-	Tokyo
15	Evaluation session and closing ceremony	-	-	Tokyo

*1. Above plan is subject to minor changes.

*2. (L) lecture, (S) site visit, (P) practice, (D) discussion, (E) exercise.

The participants are also highly expected to share “Action Plan” and the lessons learned through this program with their supervisors and colleagues in their organizations after they return to their countries.

III. Conditions and Procedures for Application

1. Expectations to Participating Organizations

- (1) This program is designed primarily for organizations that intend to address specific issues on ESC identified in their operation. Participating organizations are expected to use the program fully for improvements of those issues.
- (2) This program is enriched with contents and facilitation schemes specially developed in collaboration with relevant organizations in Japan. These special features will meet specific requirements of participating organizations and effectively facilitate their solutions of the issues.
- (3) Participating organizations are also expected to make the best use of knowledge acquired by their personnel in Japan after they return to their countries.

2. Nominee Qualifications

Applying Organizations are expected to select the most qualified nominees who meet the following qualifications.

(1) Essential Qualifications

- 1) **Eligible persons:**
 - Government officials in charge of Environmental and Social Considerations (ESC) in the infrastructure development.
 - Preferably Chief or Deputy Chief of the section.
- 2) **Experience:**

Have basic knowledge and more than 3 years of working experience in the field of ESC.
- 3) **Educational Background:**

Undergraduate degree or its equivalent background in the field.
- 4) **Language:**

Competent command of spoken and written English which is equal to TOEFL iBT 100 or more.

This program includes active participation in discussions, which requires high competence of English.

(Please attach an official certificate for English ability such as TOEFL, TOEIC, etc., if possible.)
- 5) **Health:**

To be in good health, both physically and mentally, to participate in the program in Japan. Pregnant applicants are not recommended to apply due to a potential risk on the health and life issues of an expecting mother and fetus.

(2) Recommended Qualifications

1) Age:

To be under forty-five (45) years of age in principle.

2) Gender Consideration:

JICA is promoting gender equality. Women are encouraged to apply for the program.

3. Required Documents for Application

(1) Application Form:

The Application Form is available at the JICA office (or the Japanese Embassy).

**If you have any difficulties/disabilities which require assistances, please specify necessary assistances in the Medical History(1-(d)) of the Application Form. It may allow us to prepare better logistics or alternatives.*

(2) Photocopy of passport:

To be submitted with the Application Form, if the nominee possesses a passport which he/she will carry when he/she enters Japan for this program. If not, the applicant is requested to submit its photocopy as soon as it is obtained.

** Photocopy should include the followings:*

Name, Date of birth, Nationality, Sex, Passport number, and Expiry date

(3) Inception Report: Refer to the ANNEXES

4. Procedure for Application and Selection

(1) Submission of Application Documents:

Closing date for applications: Please inquire at the JICA office (or the Japanese Embassy)

After applications are received, the JICA office in your country will forward the Application Documents to the JICA Center in Japan by

August 16 (Fri), 2019.

(2) Selection:

After the documents are received through proper channels from your government, the JICA office (or the Japanese Embassy) will conduct screenings, and then forward the promising documents to the JICA Center in Japan. Selection will be made by the JICA Center in consultation with concerned organizations in Japan.

The applicant organization with the best intention to utilize the opportunity of this program will be highly valued in the selection.

Qualifications of applicants who belong to the military or other military-related organizations and/or who are enlisted in the military will be examined by the Government of Japan on a case-by-case basis, consistent with the Development Cooperation Charter of Japan, taking into consideration their duties, positions in the organization, and other relevant information in a comprehensive manner.

(3) Notice of Acceptance:

Notification of results will be made by the JICA office (or the Japanese Embassy) not later than **September 11 (Wed), 2019.**

5. Documents to be submitted 〈For Accepted Candidates Only〉:

Accepted Candidates who received the Notification of Acceptance are required to prepare materials for the Preliminary Phase as shown below.

(1) Presentation Material (Refer to the *ANNEX VI*)

-Deadline: **October 18 (Fri), 2019**

-Contact Person: Submit to Astuko UDO (Ms.) (Udo.Atsuko@jica.go.jp / ticttee@jica.go.jp)

6. Conditions for Attendance:

- (1) To strictly adhere to the program schedule.
- (2) Not to change the program topics.
- (3) Not to extend the period of stay in Japan.
- (4) Not to be accompanied by family members during the program.
- (5) To return to home countries at the end of the program in accordance with the travel schedule designated by JICA.
- (6) To refrain from engaging in any political activities, or any form of employment for profit or gain.
- (7) To observe Japanese laws and ordinances. If there is any violation of said laws and ordinances, participants may be required to return part or all of the training expenditure depending on the severity of said violation.
- (8) To observe the rules and regulations of their place of accommodation and not to change the accommodation designated by JICA.

IV. Administrative Arrangements

1. Organizer

(1) **Name:** JICA Tokyo Center (JICA TOKYO)

(2) **Contact Person:**

Atsuko UDO (Ms.) (Udo.Atsuko@jica.go.jp / tictree@jica.go.jp)

2. **Implementing Partner:** IDEA Consultants, Inc. (<http://ideacon.jp/en/>)

3. Travel to Japan

(1) **Air Ticket:** The cost of a round-trip ticket between an international airport designated by JICA and Japan will be borne by JICA.

(2) **Travel Insurance:** Coverage is from time of arrival up to departure in Japan. Thus the traveling time outside Japan will not be covered.

4. Accommodation in Japan:

JICA will arrange accommodation for the participants in Japan.

JICA Tokyo Center (JICA TOKYO)

Address: 2-49-5 Nishihara, Shibuya-ku, Tokyo 151-0066, Japan

TEL: +81-3-3485-7051 FAX: +81-3-3485-7904

("81" is the country code for Japan, and "3" is a local area code)

If there is no vacancy at JICA TOKYO, JICA will arrange alternative accommodation for the participants. Please refer to the facility guide of JICA Tokyo at its [URL](#) and [Movie](#).

5. Expenses:

The following expenses will be provided for the participants by JICA:

- (1) Allowances for accommodation, meals, living expenses, outfit, and shipping.
- (2) Expenses for study tours (basically in the form of train tickets).
- (3) Free medical care for participants who become ill after arriving in Japan. Costs related to pre-existing illness, pregnancy, and/or dental treatments are not included.
- (4) Expenses for program implementation, including materials.
For more details, please see "III. ALLOWANCES" of the brochure for participants titled "KENSU-IN GUIDE BOOK", which will be given before departure for Japan.

6. Pre-departure Orientation:

A pre-departure orientation will be held at the respective country's JICA office (or the Japanese Embassy) to provide participants with details on their travel to Japan, conditions of the program, and other matters.

V. Other Information

Messages from the Concerned Partners for you:

Please refer to the messages below for the applicants.

(1) From Implementing Partner

Various textbook information is available on ESC through the Internet. But, you may have difficulties to prepare TOR for EIA or to review an EIA report. What you need is practical information on ESC.

In this KCCP, you can obtain practical know-how in ESC. Experienced Japanese ESC experts will tell you what is commonly done in ESC. Through visits to ESC sites around Tokyo, you can have opportunities to see actual practices of ESC. Exercises on scoping and Environmental Management Plan will improve your skills to identify key impacts of a project on the environment. You can also experience various environmental monitoring in the field. A course leader is available all the time during the program, and you can ask ESC questions to him anytime.

JICA Guidelines for ESC will be introduced by JICA ESC officers in this KCCP, and World Bank Environmental and Social Framework will be explained by their staff.

When you finish this program, you can better address ESC in your work.

*Dr. Takashi Ohwada, IDEA Consultants Inc.,
Course Leader & ESC Expert*

(2) From Past Participant of Sri Lanka in 2018

On this JICA's KCCP on ESC, we all the participants were virtually committed to practice ESC in any development act, and the progressive steps taken by JICA was remarkable. The best learning I had was common strategies and guidelines, which have supreme benefits in the name of ESC, to deal with environment and social considerations. Further, this program was fruitful enough to endow all of us with best knowledge in every aspect of ESC by incorporating with the World Bank guidelines.

After return home, I, being a sociologist, had greater chance to put acquired knowledge into productive use, by making a bridge among technical staff, stakeholders, pressure groups (environmentalists) and communities. For example, community awareness creation programs have been now conducted to show the paramount importance of protecting natural resources which followed by "Shramadhana Campaign". It is our belief that continuation of these kinds of simple acts in the long run shall have the utmost benefit against any negative impacts caused by the implementation of development activities. All in all, I would say that my career has been entirely reformed after the program, and this experience has been helping me a lot to carry out my duties and responsibilities.

*Mr. K. M. D. S. K. Kumara,
National Water Supply & Drainage Board*

VI. Annexes

ANNEX I	Guidance for Inception Report
ANNEX II	Sample of Organization Chart (*a part of Inception Report)
ANNEX III	Sample of EIA Flowchart (*a part of Inception Report)
ANNEX IV	Sample of Case Studies (*a part of Inception Report)
ANNEX V	Questionnaire (*appendix of Inception Report)
ANNEX VI	Guidance for Presentation Material

ANNEX I

< Guidance for Inception Report >

All Applicants are required to prepare an “Inception Report” upon application.

● **Purpose:**

The main purpose of Inception Report is to assess whether an applicant has enough knowledge and experience on ESC including EIA to catch up with the program.

● **Submission:**

Please submit an “Inception Report” (Word) by e-mail to the JICA Center (Udo.Atsuko@jica.go.jp / tictree@jica.go.jp) by **August 16 (Fri), 2019**

** Please send them with “the course title”, “the number (201984820-J002)”, your “country” and “name” written in your email subject.*

** Please attach the e-files directly to an e-mail. Any type of free file transfer system, compressed file like zip, or e-mail with large attached file(s) of more than 5MB cannot be received for security reason.*

** If you did not receive any reply after submitting these files, please inquire to the e-mail above.*

● **Volume:**

The report should be typewritten in English on A4 size paper (up to 5 pages) including map, tables or charts.

● **Contents:**

The report should contain the information explained in the “Outline of Inception Report” on the next page.

** Please note that the contents of this report will be used during the program for further discussion among participants to share case studies and problems. Therefore the report should contain adequate information for discussion.*

- Outline of Inception Report -

* Please make sure to indicate your **NAME** and **COUNTRY** on top of the first page in your report.

1. Brief Information of the Country

- (1) Geographic location & area of country
- (2) Population & its density
- (3) Climate & topography
- (4) Economy (main industry, GDP, etc.)

* **Describe briefly within a half page**

2. Organizational Framework and Job Description

- (1) Name of the organization
- (2) Missions of the organization
- (3) Organization chart (*Please see ANNEX II*)
- (4) Outline of the organization and division/department
(Number of staff, annual budget, availability of technical manuals, etc.)
- (5) Description of participant's job (responsibilities, main assignments, etc.)

* **Describe briefly within a half page excluding (3) Organization chart**

3. Environmental Laws and Regulations

- (1) Please provide information (e.g. title, year of enactment / enforcement) on the following environment laws and regulations of your country.
 - Fundamental environmental law
 - Laws / regulations on water pollution prevention
 - Laws / regulations on air pollution prevention
- (2) Please check (☒) the environmental quality standards established in your country.
 - ☐ Ambient air quality standard
 - ☐ Air emission standard
 - ☐ Noise/vibration standard
 - ☐ Ambient water quality standard (coastal area)
 - ☐ Ambient water quality standard (river)
 - ☐ Ambient water quality standard (lake)
 - ☐ Ambient water quality standard (groundwater)
 - ☐ Wastewater discharge standard
 - ☐ Soil/Sediment quality standard
 - ☐ Others
 - ()
 - ☐ None

(3) Please provide information (e.g. title, year of enactment / enforcement) on the laws and regulations related to the following.

- National parks
- Nature conservation areas (including Marine Protected Area)
- Protected flora / fauna
- Ecosystem conservation

(4) Please check (☒) the conventions ratified by your country and provide information (e.g. title, year of enactment/enforcement) on the laws and regulations related to the ratified conventions.

- ☐ Convention on Biological Diversity
(Related laws/regulations:)
- ☐ Convention on Wetlands of International Importance especially as Waterfowl Habitat
(Related laws/regulations:)
- ☐ Convention on International Trade in Endangered Species of Wild Fauna and Flora
(Related laws/regulations:)
- ☐ Convention on the conservation of European wildlife and natural habitats
(Related laws/regulations:)
- ☐ Others
(Related laws/regulations:)

(5) Please provide information (e.g. title, year of enactment/enforcement) on the laws and regulations related to the following.

- Land expropriation
- Resettlement and compensation

(6) Please provide information (e.g. title, year of enactment/enforcement) on the laws and regulations related to the following.

- Rights of Indigenous Peoples
- Landscape
- Cultural and historical heritages

4. EIA Laws and Regulations

(1) Please provide information (e.g. title, year of enactment/enforcement) on the EIA laws and regulations of your country.

(2) Please describe the EIA procedure (e.g. screening, scoping, public participation and evaluation processes) by using a flow chart.

(Please see ANNEX III)

(3) Screening Procedure

Are there any screening criteria established in the EIA procedure of your country?

☐ Yes ☐ No

If YES, what are the screening criteria based on? Please check relevant box below and add necessary information.

☐ Scale of the project
☐ Sector of the project
☐ Location of the project
☐ Others ()

If NO, how do you determine whether the project requires EIA or not. Please check relevant box below and add necessary information.

☐ Expert consultation
☐ Internal meeting
☐ Others ()

(4) Scoping Procedure

Please describe briefly the scoping method used in your country. In other words, how do you determine the TOR of EIA?

(5) Public Participation

Is public participation required in the EIA procedure of your country?

☐ Yes ☐ No

If YES, 1) During which stage of the EIA process?

2) Are there any restrictions on who can participate in public involvement activities? If so, please describe restricted persons or organizations.

If NO, what are the reasons?

5. Other Questions Related to EIA

(1) Please provide information on the organizational structure of the EIA appraisal department/division of your country (e.g. number of staff, staff qualifications, organization chart)

(2) Is there any EIA related department/division in the project executing organization (e.g. ministry involved in a development project) of your country?

☐ Yes ☐ No

If YES, please provide name, role and organization structure of the department/division.

- (3) Around how many EIAs are appraised per year? Please provide a list of appraised EIAs if possible.
- (4) Are universities and research institutes involved in the EIA process (e.g. screening, scoping and review processes)?
- (5) Are NGOs involved in the EIA process (e.g. public participation)?
- (6) Please provide information on the EIA consultants (individual, consulting firm) of your country (e.g. number of individuals and consulting firms, respectively). Please provide a list of the EIA consultants and consulting firms, if possible.

6. Environmental Monitoring

- (1) What kind of environmental monitoring is conducted by the government of your country? Please check (☒) relevant box below.

- ☐ Air quality
- ☐ Noise
- ☐ Water quality (coastal area)
- ☐ Water quality (river)
- ☐ Water quality (lake)
- ☐ Water quality (groundwater)
- ☐ Soil quality
- ☐ Endangered/rare wildlife species
- ☐ Growth of planted trees
- ☐ Others ()

Please describe briefly about the monitoring programs that are checked above. (e.g. frequency, parameter, executing organization).

- (2) Does your government have a pollution-source inventory?
- (3) Does your government conduct on-site inspection of pollution sources? (e.g. factories, wastewater treatment plants)

7. Case Studies (Please see ANNEX IV)

- (1) Case studies: Issues / Challenges, Lessons Learned
Describe one case in your country which needed ESC (hopefully describe one ODA loan project). Describe the following.
1. Project description
 2. Procedures

3. Environmental Impact assessment, mitigation measures and monitoring requirements
4. Issues / Challenges
5. Lessons learned; explain how EIA played its role and how this case was considered “good” or “problematic” in your country’s context.

(2) Table of content of the EIA report of the case study

** Some case study will be used as program materials.*

8. APPENDIX

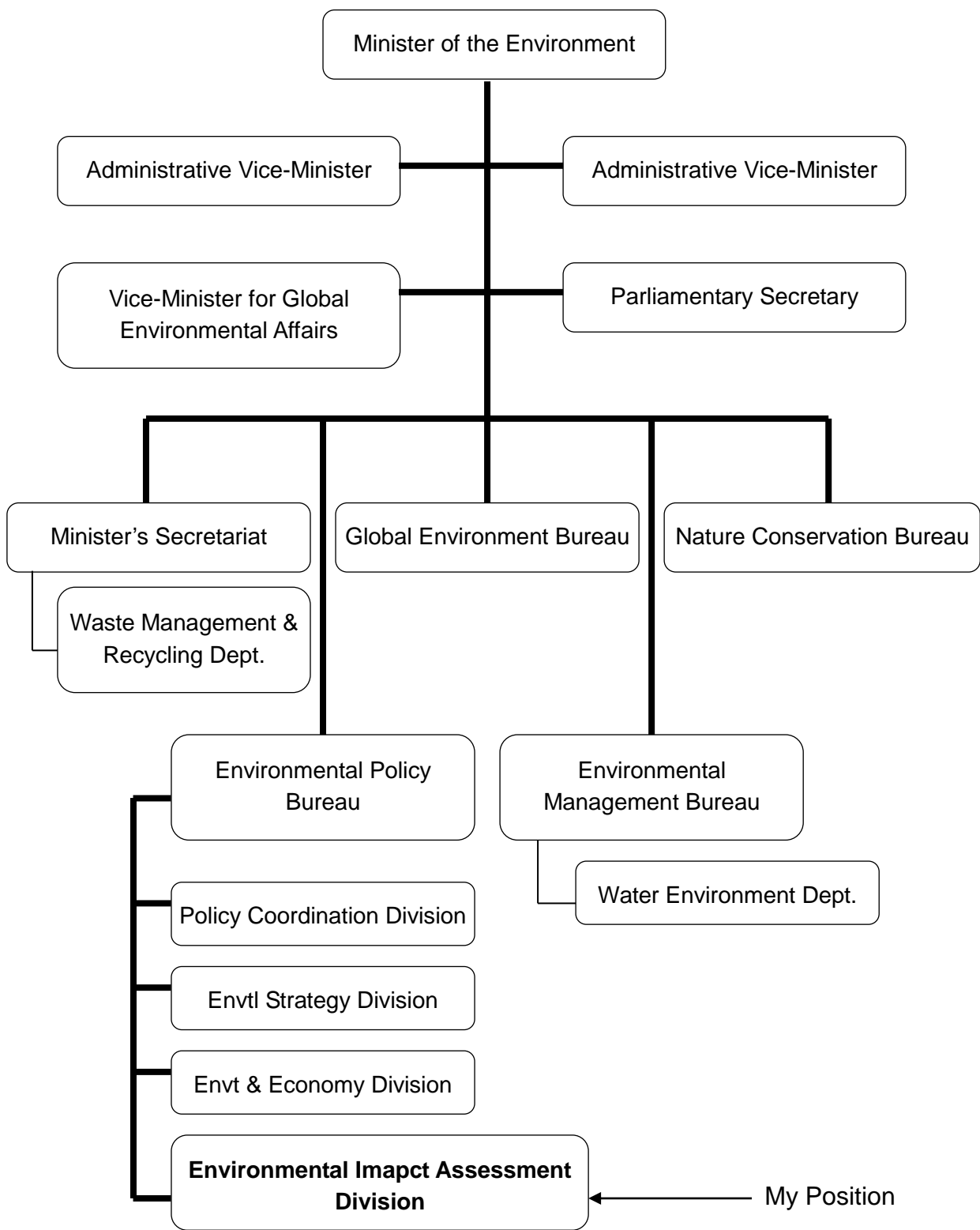
(1) Questionnaire

Please answer to the questionnaire in *ANNEX V*.

ANNEX II

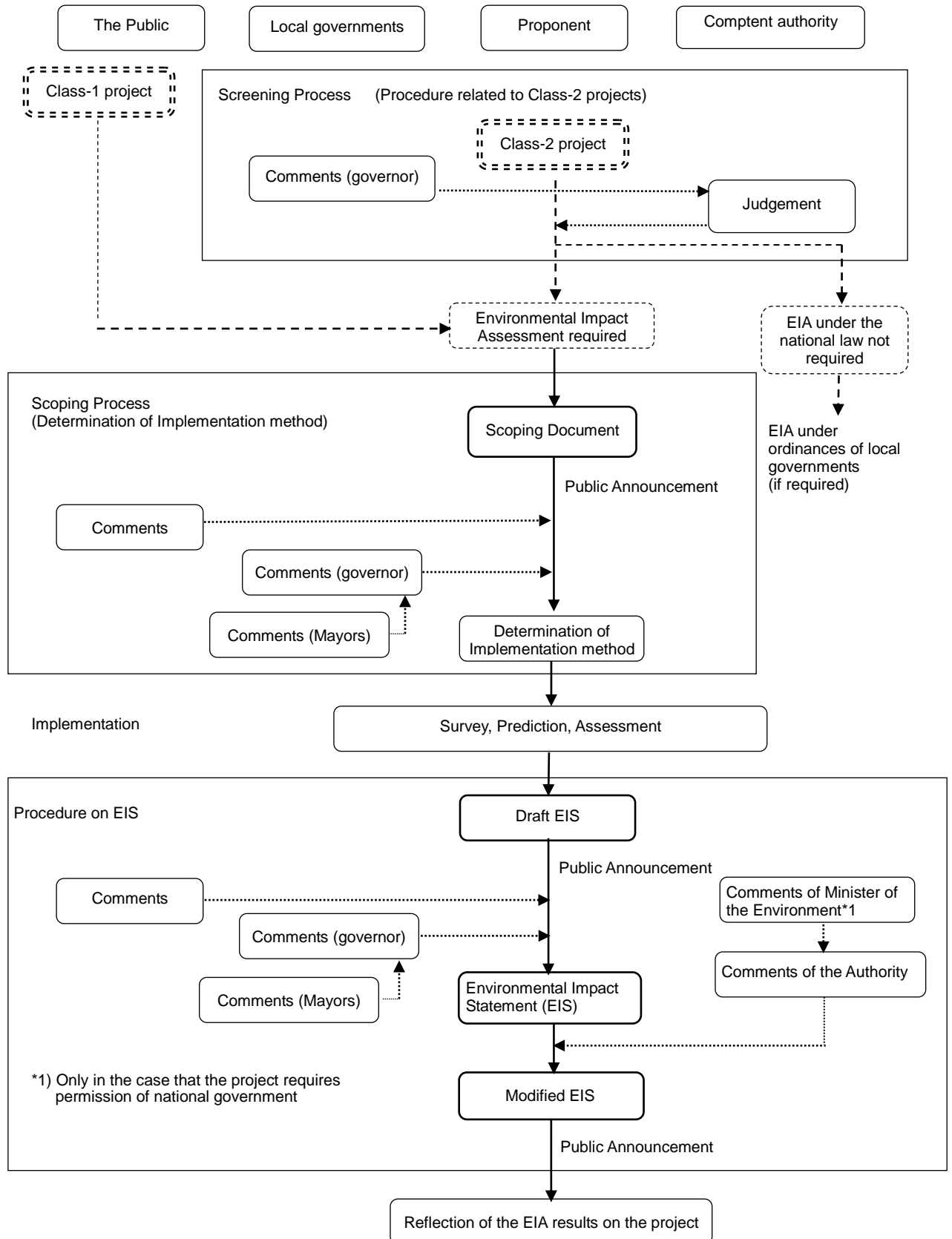
< SAMPLE of Organization Chart >

Ministry of the Environment, Government of Japan



ANNEX III

< SAMPLE of EIA Flowchart > Procedures under the EIA Law in JAPAN



ANNEX IV

< SAMPLE of Case Studies >

Road Construction Project

1. Project Description

- 1.1 Project Name: East-West Highway Construction Project
- 1.2 Project Site: XX City in the Republic of XX
- 1.3 Project Objectives: This project aims to enhance transport capacity and mitigate traffic congestion by constructing an east-west arterial highway including a tunnel crossing the XX River in XX City, thereby contributing to economic development and improvements in the living environment in XX City.
- 1.4 Project Components: The project carries out the new construction and expansion of road (six-lane highway in both ways with a total length of about XX km including a tunnel of roughly XX km crossing the XX River).
- 1.5 Executing Agency: Ministry of Transportation (MOT) Project Management Unit
- 1.6 Estimated Project Cost: XX million US dollar (Loan Amount: XX million US dollar)
- 1.7 Donors: Financed by [JICA/ WB/ ADB/ AfDB, etc.]
- 1.8 Date of Loan Agreement: May, 20XX

2. Procedures

2.1 Approval for Environmental and Social Considerations

The EIA report was prepared by MOT, and approved by XX [Approval Agency] in XX [year, month]. Resettlement Action Plan (RAP) was prepared by MOT, and approved by XX in XX. Indigenous Peoples Plan (IPP) was not required for the project.

2.2 Consultation with Local Stakeholders

Public consultation was conducted on XX [date, 20XX] at the office of XX village in meeting style, and about XX members were participated. MOT explained to the participants about the project outline and anticipated environmental and social impacts with brochure, and that participants mainly raised opinions regarding the resettlement policy and relocation site.

2.3 Information Disclosure

The EIA report has been disclosed on website since [year, month]. Also, the EIA report has been placed on local government office since [year, month] and photocopy has been allowed for local people.

3. Impact Assessment, Mitigation Measures

3.1 Analysis of alternatives

Minimizing the impacts on natural environment, residents, waterway was considered as much as possible at the stage of Feasibility Study. As a result, selected alignment is designed so as not to pass through the densely-populated areas in XX village.

3.2 Pollution Control

The impacts of the project on air pollution (SO₂, NO_x, PM) and noise after the start of its

operation will be mitigated by such measures as installing soundproof walls, planting trees, spraying water, and these impacts are expected to comply with the country's environmental standards.

3.3 Monitoring

Air and water quality, noise will be monitored by XX agency, with the support of local consultant. Monitoring reports are planned to be submitted to the Ministry of Environment and the funding institution as a part of the Project Status Report, 4 times a year during construction phase, and twice a year during operation phase. The minutes of stakeholder meetings will also be included in the monitoring reports.

3.4 Natural Environment

Protected forest areas and migration paths of wild animals are located near the project sites. Animal-crossing warning signs, slowdown zones and underground paths for animals are installed and XX agency monitors the situation.

3.5 Social Environment

This project involves land acquisition (XX ha) and involuntary resettlement (XX people), which will be implemented in line with the procedures stipulated in the domestic laws and RAP formulated by XX. Compensation for loss of land would be paid in cash at full replacement cost basically, and relocation sites for the affected households will be prepared by XX agency.

4. Issues and Challenges

4.1 Issues on Environmental Standards

Lack of sufficient ambient air/water quality standards is an issue. Though JICA Guidelines encourages to comply with international standards, such standards are extremely difficult to achieve in our country. It is important to consider how to cope with such gaps observed between national and international standards.

4.2 Issues on Stakeholder Meetings

Since there are several schools and hospitals nearby the construction site, there are many local people who express concerns on noise and air pollution. It is difficult to reach a consensus in the stakeholder meetings regarding such concerns.

4.3 Issues on Mitigation Measures and Monitoring

There are some endangered species inhabiting nearby the road construction sites. It is difficult to find another location where there are no endangered species, and we receive many criticisms from the environmental NGOs. In addition, due to financial and technical constraints, it is difficult to introduce an effective mitigation measure to alleviate the impacts on the endangered species.

5. Lessons Learned

5.1 Consultation with Local Stakeholders

There was no objection for the project, but public consultation should have been conducted earlier stage for better understanding for local stakeholders and smooth implementation.

5.2 Monitoring

It is required to confirm the result of environmental and social monitoring which shall be conducted by MOT during construction and operation phase.

**** Please describe more information and prepare some pictures for good practice or specific concerns.***

ANNEX V

< Questionnaire >

1. Have you or your organization ever been involved in any ODA projects?

☐ YES ☐ NO

If YES, please describe briefly.

(i) Name of the project:

(ii) Name of the donor agency:

(iii) Name of the implementing organization:

(iv) Type and scale of the project (financial/physical):

(v) Others

If NO, please describe the possibility for such situation in future and prospected donor agencies/countries to be affiliated with.

2. Do you know or have any experience to apply EIA guidelines or policies of bilateral and/or multilateral financial institutions?

☐ YES ☐ NO



If so, please choose from the following:

- ☐ JICA guidelines for environmental & social considerations
- ☐ JBIC guidelines for confirmation of environmental and social considerations
- ☐ World Bank: Environmental and Social Framework, etc.
- ☐ International Finance Corporation: Policy on Social and Environmental Sustainability, Performance Standards, etc.
- ☐ Regional Development Banks (AfDB, ADB, EBRD, IDB, etc.): Safeguard Policies, Environmental Assessment Guidelines, Operations Manual, etc.
- ☐ Others: _____

3. Have you undertaken any EIA for large-scale development projects?

☐ YES ☐ NO

<p>If <u>YES</u>, please describe briefly.</p> <p>(i) Name of the projects:</p> <p>(ii) Name of the implementing agencies:</p> <p>(iii) Type and scale of the projects (financial/physical):</p> <p>(iv) Others</p>
<p>If <u>NO</u>, please describe the possibility for such situation in future.</p>
<p>4. Has Strategic Environmental Assessment (SEA) been introduced or adopted in your country?</p> <p><input type="checkbox"/> YES <input type="checkbox"/> NO</p> <p> └─ If so, are there any plans in future?</p> <p>Comments:</p>
<p>5. Have you had experience in projects which involved involuntary resettlement?</p> <p><input type="checkbox"/> YES <input type="checkbox"/> NO</p> <p> └─ If so, please describe briefly:</p> <p>Comments:</p>
<p>6. Have you had experience in projects which involved Indigenous Peoples?</p> <p><input type="checkbox"/> YES <input type="checkbox"/> NO</p> <p> └─ If so, please describe briefly:</p> <p>Comments:</p>
<p>7. Have you had any specific experience in the process of public participation?</p> <p><input type="checkbox"/> YES <input type="checkbox"/> NO</p> <p> └─ If so, please describe briefly:</p> <p>Comments:</p>
<p>8. Experience on undertaking screening or providing advice/input</p> <p><input type="checkbox"/> Never <input type="checkbox"/> Sometimes <input type="checkbox"/> Often <input type="checkbox"/> Almost Always</p> <p>Comments:</p>

<p>9. Identification of key stakeholders</p> <p><input type="checkbox"/> Never <input type="checkbox"/> Sometimes <input type="checkbox"/> Often <input type="checkbox"/> Almost Always</p> <p>Comments:</p>
<p>10. Setting any Terms of Reference for an EIA study</p> <p><input type="checkbox"/> Never <input type="checkbox"/> Sometimes <input type="checkbox"/> Often <input type="checkbox"/> Almost Always</p> <p>Comments:</p>
<p>11. Preparing an impact mitigation or environmental management plan</p> <p><input type="checkbox"/> Never <input type="checkbox"/> Sometimes <input type="checkbox"/> Often <input type="checkbox"/> Almost Always</p> <p>Comments:</p>
<p>12. Reviewing an EIA report for compliance or technical adequacy</p> <p><input type="checkbox"/> Never <input type="checkbox"/> Sometimes <input type="checkbox"/> Often <input type="checkbox"/> Almost Always</p> <p>Comments:</p>
<p>13. Writing part, or all, of an EIA report</p> <p><input type="checkbox"/> Never <input type="checkbox"/> Sometimes <input type="checkbox"/> Often <input type="checkbox"/> Almost Always</p> <p>Comments:</p>
<p>14. Writing terms and conditions to accompany project approval</p> <p><input type="checkbox"/> Never <input type="checkbox"/> Sometimes <input type="checkbox"/> Often <input type="checkbox"/> Almost Always</p> <p>Comments:</p>
<p>15. Please describe specific area/sector of interest (for field observation) (e.g. transport, energy, etc.).</p>
<p>16. Please describe main topics that you intend to apply this program.</p>

< **Guidance for Presentation Material** >

All Accepted Candidates are requested to prepare for “Presentation”.

- **Purpose:**

All participants will have opportunity to deliver a 15-minute presentation on Day 2 of the program. The main purpose is to share issues/challenges in implementing ESC in each country with other participants, JICA and an implementing partners of this program.

- **Submission:**

Please submit a “Presentation Material” (PowerPoint) by e-mail to the JICA Center (Udo.Atsuko@jica.go.jp / tictree@jica.go.jp) by **October 18 (Fri), 2019**

** Please send them with “the course title”, “the number (201984820-J002)”, your “country” and “name” written in your e-mail subject.*

** Please attach the e-files directly to an e-mail. Any type of free file transfer system, compressed file like zip, or e-mail with large attached file(s) of more than 5MB cannot be received for security reason.*

** If you did not receive any reply after submitting these files, please inquire to the e-mail above.*

** Please bring the e-file of the presentation with you to Japan in case of some mechanical trouble.*

- **Format:** Accepted candidates will receive a PowerPoint format for the presentation with Acceptance Notification through the JICA office (or the Japanese Embassy).

- **Length of presentation:**

Maximum **15 minutes** per person

- **Contents & Format:**

Please put the primary focus on the following points. It should be well-organized and elaborated.

- (1) Issues/challenges in practicing ESC in each country
- (2) Contents of the project he/she is involved in, efforts for mitigating and monitoring environmental impacts, issues and constraints he/she actually confronts in implementing ESC in reality
- (3) Good practices or lessons learned from past experiences

For Your Reference

JICA and Capacity Development

The key concept underpinning JICA operations since its establishment in 1974 has been the conviction that “capacity development” is central to the socioeconomic development of any country, regardless of the specific operational scheme one may be undertaking, i.e. expert assignments, development projects, development study projects, training programs, JOCV programs, etc.

Within this wide range of programs, Training Programs have long occupied an important place in JICA operations. Conducted in Japan, they provide partner countries with opportunities to acquire practical knowledge accumulated in Japanese society. Participants dispatched by partner countries might find useful knowledge and re-create their own knowledge for enhancement of their own capacity or that of the organization and society to which they belong.

About 460 pre-organized programs cover a wide range of professional fields, ranging from education, health, infrastructure, energy, trade and finance, to agriculture, rural development, gender mainstreaming, and environmental protection. A variety of programs are being customized to address the specific needs of different target organizations, such as policy-making organizations, service provision organizations, as well as research and academic institutions. Some programs are organized to target a certain group of countries with similar developmental challenges.

Japanese Development Experience

Japan was the first non-Western country to successfully modernize its society and industrialize its economy. At the core of this process, which started more than 140 years ago, was the “*adopt and adapt*” concept by which a wide range of appropriate skills and knowledge have been imported from developed countries; these skills and knowledge have been adapted and/or improved using local skills, knowledge and initiatives. They finally became internalized in Japanese society to suit its local needs and conditions.

From engineering technology to production management methods, most of the know-how that has enabled Japan to become what it is today has emanated from this “*adoption and adaptation*” process, which, of course, has been accompanied by countless failures and errors behind the success stories. We presume that such experiences, both successful and unsuccessful, will be useful to our partners who are trying to address the challenges currently faced by developing countries.

However, it is rather challenging to share with our partners this whole body of Japan’s developmental experience. This difficulty has to do, in part, with the challenge of explaining a body of “tacit knowledge,” a type of knowledge that cannot fully be expressed in words or numbers. Adding to this difficulty are the social and cultural systems of Japan that vastly differ from those of other Western industrialized countries, and hence still remain unfamiliar to many partner countries. Simply stated, coming to Japan might be one way of overcoming such a cultural gap.

JICA, therefore, would like to invite as many leaders of partner countries as possible to come and visit us, to mingle with the Japanese people, and witness the advantages as well as the disadvantages of Japanese systems, so that integration of their findings might help them reach their developmental objectives.



CORRESPONDENCE

For enquiries and further information, please contact the JICA office or the Embassy of Japan. Further, address correspondence to:

JICA Tokyo Center (JICA TOKYO)

Address: 2-49-5 Nishihara, Shibuya-ku, Tokyo 151-0066, Japan

TEL: +81-3-3485-7051 FAX: +81-3-3485-7904