

2018 KOICA-Ewha Master's Degree Program in International Studies (Capacity Development of Gender Equality Leadership)

August 5, 2018 – December 31, 2019

Seoul & Seongnam, Republic of Korea



Korea International Cooperation Agency



Graduate School of International Studies
Ewha Womans University

Participants are strongly advised to thoroughly read and follow the provided instructions in the Program Information.

Contents

PART I. PROGRAM OVERVIEW.....	1
PART II. PROGRAM CONTENTS.....	3
PART III. TRAINING INSTITUTE.....	13
PART IV. ACADEMIC REGULATIONS.....	36
PART V. REQUIRED DOCUMENTS.....	41
PART VI. CONTACTS	43

I . PROGRAM OVERVIEW

■ **Program Title:** KOICA-Ewha Master's Degree Program in International Studies
(Capacity Development of Gender Equality Leadership)

■ **Duration**

- **Stay duration:** August 5, 2018 ~ December 31, 2019 (17 months stay in Korea including 4 weeks of pre-requisite courses and 4 semesters).
- During 17 months of Ewha-KOICA Master's Program, students should fulfill course requirements and complete their master's theses.
- **Academic duration:** 4 semesters
- In accordance to the university regulations, the diploma will be issued in February 2020.

■ **Degree:**

- Master's Degree in International Studies (Development Cooperation)

■ **Objectives**

- 1) To provide high quality education for women professionals with theoretical and practical skills and knowledge of development to ensure gender equality and empowerment of women in developing countries
- 2) To develop leadership capacity of women officials in public sector so that they can play key roles in the development process of their countries
- 3) To share Korea's development experience that can be applied to their endeavors to achieve economic development as well as to improve the condition and position of women in participants' countries
- 4) To build cooperative relationships between Korea and partner countries through the global network of women leaders
- 5) To improve practical leadership skills and capacity of women officials engaging in public service sector

■ Training Institute

- Graduate School of International Studies, Ewha Womans University
- <http://gsis.ewha.ac.kr>
- Ewha-KOICA Program Website: <http://ewhakoica.ewha.ac.kr>

■ Number of Participants: 20

■ Language: The Program is conducted in English

■ Accommodations: University dormitory room and facility are provided

II. PROGRAM CONTENTS

1. ACADEMIC SCHEDULE

Session	Date (YYYY.MM.DD)	Contents / Remarks
Preparatory Session	2018.08.05	Arrival
	2018.08.06	KOICA Orientation
	2018.08.08	Ewha Orientation
Pre - Course	2018.08.08 - 2018.09.01	4 weeks
Fall Semester (1st semester)	2018.09.01 - 2018.12.21	15 weeks
Winter Semester (2nd semester)	2019.01.03 - 2019.02.28	9 weeks
Spring Semester (3rd semester)	2019.03.01 - 2019.06.21	15 weeks
Thesis Seminars	2019.01.02 – 2019.12.01	50 weeks
Thesis Semester (4th semester)	2019.09.01 – 2019.12.21	15 weeks
Wrap-up Session	2019.12.02	Final Thesis Presentation

*The above schedule is subject to change.

**A detailed Program Schedule will be provided upon arrival.

- Pre-requisite courses will take place from Aug. 8 to Sep. 1, 2017. The Pre-requisite courses include 1) IS101 Economic Analysis, 2) IS102 Political Analysis, and 3) IS103 Statistical Analysis, which are the basic analysis methods needed for the master's degree coursework, and 4) Lectures on Korean Society and Culture that help students to learn about Korea. A detailed Program Schedule will be provided upon arrival.
- Korean Language Class: Students will take Korean language classes as a pre-requisite course in August and they are also required to take the Korean language

classes every semester throughout the program. A certificate will be conferred to students who have completed the courses successfully and reached the required level.

- All pre-requisite courses are Pass/Non pass (P/NP) grading.

2. ORIENTATION

When you first arrive, there will be an orientation for 2-3 days for KOICA's Scholarship Program at the KOICA International Cooperation Center (ICC). The orientation aims to provide the participants with useful information on the program as well as general information on living in Korea that you will need during the program. Usually, the orientation is composed of three parts: KOICA's welcoming session, and a medical check-up. The order of each part is subject to change.

Session	Date	Contents
Arrival	2018.08.05	Arrival in Korea
KOICA Orientation	2018.08.06	KOICA's welcoming session

- * Before the dormitory check-in, you will stay at KOICA International Cooperation Center (ICC).

3. CURRICULUM

1) Master's Degree in International Studies

For students in Ewha-KOICA Scholarship Program (Capacity Development of Gender Equality Leadership), the concentration courses of the Development Cooperation major are offered with a focus on gender equality. In addition, students can take other courses as electives from four major functional areas, such as Development Cooperation, International Trade & Investment, International Business, and International Relations. Ewha-KOICA program offers diverse curriculum including lectures, seminars, and workshops on gender, development and leadership skills. Below is the curriculum for Ewha-KOICA program.

A. Curriculum & Credits

Classification	Courses	Credits	Sum
1.Prerequisite Courses	IS101 Economic Analysis	P/NP	-
	IS102 Political Analysis		
	IS103 Statistical Analysis		
	- Lecture on Korean Society and Culture		
	- Korean Language Class		
2.Required Courses	IS203 Research Methods and Fieldwork	3	3
3.Required Courses for KOICA	IS549 Economic Development of Korea	3	6
	IS622 Gender and Development	3	
	- Korean Language Class	P/NP	
4.Professional Training Courses	IS301 Distinguished Global Lecture Series (Two semesters: 1 credit/ semester)	2	5
	IS181 Practicum on Gender and Development	1	
	IS311 Writing and Presentation Workshop	1.5	
	IS312 Global Career Management Workshop	1.5	
5.Concentration Requirements	IS182 Practicum on Gender Equality and Women's Empowerment	3	6
	IS410 Development Cooperation: Theory and Practice	3	
6.Concentration Electives	IS407 Global Political Economy	3	Minimum 9 (Including 1.5 credit courses)
	IS503 Korean Economy	3	
	IS516 Management Evaluation in Development Cooperation	3	
	IS529 Special Topics in Development	3	
	IS533 Public-Private Partnership	3	
	IS534 CSR and Development Cooperation	3	
	IS544 Trade and Development	3	
	IS613 Comparative Societies & Culture	3	
	IS614 NGOs and International Cooperation	3	
	IS621 Gender Mainstreaming in Development	3	
	IS623 Women and Human Rights	3	
	IS624 Global Women Leadership & HRD	3	
	IS625 Women in East Asia	3	
	IS645 Sustainable Development	3	
	IS646 Finance and Development	3	
	IS648 Poverty and Development	3	
	IS664 East Asian Politics and Societies	3	
	IS670 Political Economy of Development	3	
	IS671 Human Security and Development	3	
	IS673 International Humanitarian Assistance	3	

	IS674 East Asian Development	3	
	IS732 Korean History and Culture	3	
	IS923 Advanced Topics in Development Cooperation	3	
	IS135 Practicum on Social Entrepreneurship and Development	1.5	
	IS151 Practicum on Development Cooperation in Africa	1.5	
	IS152 Practicum on Development Cooperation in Asia	1.5	
	IS153 Practicum on Humanitarian Relief	1.5	
7.Electives (Optional)	IS201 International Negotiations and Strategy	3	Optional
	IS401 International Economics: Theory and Practice	3	
	IS403 International Trade Policy	3	
	IS404 International Business: Theory and Practice	3	
	IS408 International Relations: Theory and Practice	3	
	IS501 International Trade Law	3	
	IS502 International Finance	3	
	IS508 Global Strategic Management	3	
	IS512 Global financial Management	3	
	IS518 International Security	3	
	IS519 Principles of International Law	3	
	IS522 International Business Law	3	
	IS524 Financial Analysis and Planning	3	
	IS525 Special Topics in International Trade	3	
	IS526 Special Topics in International Finance	3	
	IS527 Special Topics in International Business (A)	3	
	IS528 Special Topics in International Business (B)	3	
	IS531 Special Topics in International Relations	3	
	IS536 Global Governance and Human Security	3	
	IS538 East Asian Thought and Culture	3	
	IS540 Multiethnic Societies and Conflict Management	3	
	IS541 East Asian Economies	3	
	IS542 Foreign Direct Investment	3	
	IS546 Case Studies in Trade Dispute	3	
	IS547 FTA and the Global Trading System	3	
	IS615 Global Marketing Management	3	
	IS619 Global Human Resource Management	3	
	IS641 Corporate Governance and Social Responsibility	3	
	IS647 International Human Rights	3	

8. 21st Century Program (Select field/ Optional)		IS649 International Relations of East Asia	3	
		IS650 Public Diplomacy	3	
		IS652 Special Topics in International Legal Studies	3	
		IS664 East Asian Politics and Societies	3	
		IS672 Peace-Building and Development in Conflict Areas	3	
		IS682 Regional Integration in Europe and Asia: Comparative Perspectives	3	
		IS744 International Organizations	3	
		IS921 Advanced Topics in International Economy	3	
		IS131 Practicum in Social Venturing	1.5	
		IS132 Practicum on Brand and Reputation Management	1.5	
		IS133 Practicum on CSR	1.5	
		IS171 Practicum in IPR	1.5	
		IS172 Practicum in Public Diplomacy	1.5	
		IS173 Practicum on Conflict Transformation	1.5	
		IS174 Practicum on Good Governance	1.5	
	Negotiations and Conflict Management	IS153 Practicum on Humanitarian Relief	1.5	Optional (Minimum 9 for selected field)
		IS173 Practicum on Conflict Transformation	1.5	
		IS174 Practicum Good Governance	1.5	
		IS201 International Negotiations and Strategy: Theory and Practice	3	
		IS536 Global Governance and Human Security	3	
		IS540 Multiethnic Societies and Conflict Management	3	
		IS618 Cross-Cultural Communications	3	
	International Public Relations	IS672 Peace-Building and Development in Conflict Areas	3	
		IS132 Practicum on Brand and Reputation Management	1.5	
		IS134 Practicum on e-Marketing	1.5	
		IS171 Practicum in IPR	1.5	
		IS172 Practicum in Public Diplomacy	1.5	
		IS611 Principles of International Public Relations	3	
		IS615 Global Marketing Management	3	
		IS618 Cross-Cultural Communications	3	
	International Legal Studies	IS650 Public Diplomacy	3	
		IS662 International Journalism and Mass Communication	3	
		IS501 International Trade Law	3	
		IS519 Principles of International Law	3	
		IS522 International Business Law	3	

		IS647 International Human Rights	3	
		IS652 Special Topics in International Legal Studies	3	
	Global Women Leadership	IS621 Women and International Cooperation	3	
		IS622 Gender and Development	3	
		IS623 Women and Human Rights	3	
		IS624 Global Women Leadership and HRD	3	
		IS625 Women in East Asia	3	
	Public-Private Partnership and Corporate Social Responsibility	IS131 Practicum in Social Venturing	1.5	
		IS133 Practicum on CSR	1.5	
		IS135 Social Entrepreneurship and Development	1.5	
		IS508 Global Strategic Management	3	
		IS533 Public Private Partnership	3	
		IS534CSRandDevelopmentCooperation	3	
		IS641 Corporate Governance and Social Responsibility	3	
		IS646 Finance and Development	3	
	East Asian Studies	IS503 Korean Economy	3	
		IS538 East Asian Thought and Culture	3	
		IS541 East Asian Economies	3	
		IS548 Special Topics on China	3	
		IS625 Women in East Asia	3	
		IS649InternationalRelationsofEastAsia	3	
		IS664 East Asian Politics and Societies	3	
		IS674 East Asian Development	3	
		IS721 Political Economy of East Asia	3	
		IS731 Korean Politics	3	
		IS732 Korean History and Culture	3	
		KS506 Comparative Studies of the East Asia Cultures	3	
	Regional Cooperation	IS543 Regional Integration and Cooperation	3	
		IS649 International Relations of East Asia	3	
		IS681 Special Topics in the EU	3	
		IS682 Regional Integration in Europe and Asia: Comparative Perspectives	3	
		IS721 Political Economy of East Asia	3	
9. Thesis		Z0001 Thesis Research	3 (P/NP)	3
Total Credits Required for Graduation				41

The above curriculum is subject to change.

* The specified number of credits from the elective section is the minimum number of credits the students must take.

B. Credits taken per semester

Semester (max. credits)	Course Classification	Courses
Prerequisite Course (-)	Orientation	Ewha-KOICA Program Orientation (academic affairs, dormitory regulations, safety education etc.)
	Prerequisite Course	Economic Analysis
		Political Analysis
		Statistical Analysis
		Korean (1)
Fall Semester (1st semester) (14)	Concentration Requirements (Functional Concentration) (3)	Development Cooperation: Theory and Practice
	Required Courses for KOICA (3)	Gender and Development
	Professional Training Courses (1)	DGLS
	Professional Training Courses (1)	Global Career Management Workshop
	Electives (Optional) (6)	2 Elective courses
	Required	Korean (2)
Winter Semester (2nd semester) (6)	Required Courses (3)	Research Methods and Fieldwork
	Required Courses for KOICA (3)	Economic Development of Korea
	Required	Thesis Seminars
	Required	Korean (3)
Spring Semester (3rd semester) (14)	Professional Training Courses (1)	DGLS
	Professional Training Courses (1)	Academic Writing and Presentation Workshop
	Electives (Optional) (12)	3 Elective courses
	Required	Korean (4)
Thesis Semester (4 th semester) (6)	Thesis (3)	Thesis Research
	Concentration Requirements (3)	Practicum on Gender Equality and Women's Empowerment
	Required	Korean (5)

C. Required Grade Point Average (GPA)

- Students with a GPA below 2.50 for two consecutive semesters will be automatically expelled from the program.
- Students with an accumulated GPA below 3.0 for the three semesters before the thesis semester (Fall, Winter, Spring) will be disqualified from acquiring a diploma or a graduation certificate.
- Requirements for writing thesis in the fourth semester are:
 - Acquire a minimum of 35 credits within three semesters.
 - Acquire a minimum GPA 3.0 or above
 - Take at least three courses from functional major requirements.
 - Acquire B0 or above in each functional major requirement courses.

2) Ewha-KOICA Scholarship Program Regulations

A. Ewha GSIS Regulations

- Ewha-KOICA students must abide by the 'Honor Code' adopted by Ewha GSIS and submit the completed form upon agreement.
- If a student violates the university regulations, she is subject to disciplinary measures by the Ewha GSIS Disciplinary Committee. Multiple violations will result in expulsion from the program.

B. Ewha Womans University Dormitory regulations (Graduate Students Dormitory)

- All Ewha-KOICA Scholarship Program students must reside in the Graduate Students Dormitory (August 8, 2018 – December 20, 2019).
- The dormitory rooms for graduate students are double occupancy.
- Living off-campus is prohibited while in school. Living with one's family in the dormitory also prohibited. (A trainee/student must not bring her family to Korea during the scholarship program).
- Ewha has very strict dormitory regulations and all students must abide by them.

- A student who violates dormitory regulations will be evicted from the dormitory and the program. The scholarship will be also terminated.
- Smoking and drinking alcohol are strictly prohibited in the university dormitory.
- Due to safety reasons, cooking within the premises of the dormitory is only permitted in the shared 'Kitchenette.'

4. EXTRACURRICULAR ACTIVITIES (TENTATIVE)

1) Field trip*

A. Practicum in Korean Society and Development

- **Culture:** Gyeongju (Bulguksa, Seokguram, Cheom seongdae, Anapji etc.), Ganghwa County (Chojijin, Bomunsa, Mt. Mani), Korean Folk Village, Bukchon Hanok Village, Jeonju Hanok Village, Hwaseong Fortress, National Museum of Korea, Seoul Museum of Art, Seoul Fortress and others.



- **Gender Issues:** Korean Women's Development Institute, Ministry of Gender Equality and Family, Ewha Welfare Center, District Social Welfare Center, and House of Sharing for Japanese military's sex-slave victims.

- **Economic Development** Samsung Electronics, POSCO, Hyundai Motor, Hyundai Shipbuilding, Hyundai Heavy Industries, SK Energy, Hankook Chinaware, Lotte SamKang, and Gumi National Industrial Complex, LG Electronics, and Museum of Saemaeul Undong.



- **History:** DMZ, Independence Memorial Hall of Korea, UN Memorial Cemetery in Korea, The War Memorial of Korea and others

* Places are subject to change.

2) Other Extracurricular Activities

- Welcoming Ceremony and Ewha-KOICA Orientation
- GSIS Open House
- International Cultural Festival
- Country Booth Exhibition
- Talent Night
- International Food Festival
- Team-building Activities
- Workshops, Forums and Conferences
- Korean Speech Contest
- Thesis Presentation
- Convocation Ceremony



III. TRAINING INSTITUTE

1. GENERAL INFORMATION

1) Ewha Woman University

- Ewha, founded in 1886, is the first female educational institution in Korea. Since its foundation, Ewha has been at the forefront of advancing gender equality and empowerment of women in Korea. Ewha is the largest women's university in Korea with enrollment of 25,000 students in 12 colleges and 15 graduate schools. The university continues to empower women through education and the impact is visible by simply looking at the various academic and professional programs offered at the undergraduate, graduate, and postgraduate levels, and diverse campus events.
- Women leadership has been a key to Ewha's past and current success as a women's institution of higher education. With the changing status of women, the university has launched a series of innovative programs and pursued broad objectives to train a new generation of women professionals at the local, national, and global level. Ewha now is sharing its success with the world by playing a key role in educating female students from all over the world and help them become future global leaders.

2) The Graduate School of International Studies (GSIS)

- The Graduate School of International Studies (GSIS) at Ewha Womans University was established in March 1997 to spearhead the effort to provide the intellectual breadth and professional development necessary to successfully launch women into the international arena.
- Ewha GSIS produces top quality leaders based on the program's commitment to excellence at every level. Ewha GSIS is well designed to meet the diverse needs of the students. Graduate seminars offer in-depth academic exposure as well as extensive student engagement through low student-to-faculty ratio. Ewha GSIS courses rigorously train students' analytical capacities as well as develop practical

skills to prepare students for an increasingly globalized and competitive work environment. In addition to the courses, a variety of special lectures, workshops, and conferences addressing diverse international issues are held. Ewha GSIS has a winning program and a proven track record of producing global women leaders. The Korea Ministry of Education ranked Ewha GSIS number one out of all GSIS programs in Korea.

- Ewha GSIS professors have received research and institutional grants from the Bill & Melinda Gates Foundation, the Bosch Foundation, Friedrich Ebert Stiftung (FES), KIEP, Korea Foundation, National Research Foundation, and many others to make Ewha GSIS one of the best-funded programs of its kind in Korea enabling the students to continue their education with scholarships and research opportunities.

3) Global Ewha GSIS

- Ewha GSIS has succeeded in building an exceptional program with one of the most diverse student and faculty bodies in the world. Students from over 70 countries have gathered at Ewha GSIS to become experts in international trade and investment, international business, development cooperation, and international relations.
- Ewha GSIS is the only school in Korea with a dual M.I.S. degree program in conjunction with the Elliot School in George Washington University. After completing three semesters at Ewha GSIS and two semesters at the Elliot School, students receive two Master's Degrees in International Studies.

4) Ewha GSIS affiliated Research Institutions

Institute for Development and Human Security (IDHS)

- IDHS dedicates in advancing development cooperation and human security around the work. IDHS also educates and trains specialists and professionals to work in the field of development cooperation disseminates research findings and engage in events which help raises public awareness on development cooperation and human security.

Institute for International Trade and Cooperation (IITC)

- IITC specializes in international trade, international cooperation and regional research by systematic integration of social science, law, management, and more that involves professors from each discipline. IITC publishes Asian International Studies Review journal biannually.

Global Career Management Center (GCMC)

- GCMC provides career development, career education, and practical experiences to GSIS students to help them find job opportunities.

The Center for Global Social Responsibility (CGSR)

- CGSR was founded to raise awareness of social responsibility among social-economic agents and to carry out research on corporate social responsibility (CSR), socially responsible investing (SRI), social economy, development cooperation, and public-private partnerships (PPP). It also serves to bridge the gap between academics and practitioners through its partnerships with academic and non-academic institutions.

The Public Diplomacy Center (PDC)

- PDC seeks to promote mutual interests between the host country and home country through genuine dialogue in an era of globalization where citizens are becoming more and more influential. The center's main activities include research, education, and training on public diplomacy issues including policy formation, policy assessments, academic and educational exchange programs, civic engagements, cultural cooperation and so on.
- Through the high standard of education and training excellence at Ewha GSIS, students develop acute analytical skills, become perceptive negotiators, learn effective written as well as oral communication skills, develop the ability to work effectively in teams as well as an individual, and become effective decision-makers for the global arena. Learning at Ewha GSIS is a truly enriching and worthwhile experience. Because of our unique educational platform, which is distinguishable from other related programs; our students are strategically positioned to become leading women professionals in their chosen international fields.

5) Functional concentration

▪ DEVELOPMENT COOPERATION

- Development Cooperation concentration prepares students for future work in various multilateral and bilateral international organizations with a special emphasis on international development. Through an interdisciplinary array of courses in economic development, democracy, and international development cooperation in developing countries, students in this major acquire a broader understanding of the processes of economic, political, and social change and development in the developing world.

▪ INTERNATIONAL TRADE & INVESTMENT

- International Trade & Investment concentration is designed to meet the growing need for international trade specialists in Korea and abroad. This program studies the theory, formulation, and history of international trade and negotiation. In addition, students are expected to develop a broad understanding of how economic, business, and political factors interact in shaping the international trade environment.

▪ INTERNATIONAL BUSINESS

- International Business concentration is designed for students who wish to pursue internationally oriented careers in various kinds of private and public sectors dealing primarily with international business and management. This program offers special expertise in international business, finance, and management.

▪ INTERNATIONAL RELATIONS

- International Relations concentration aims to train students to cope with the ever-changing dynamics of international affairs. This concentration is designed for students interested in defense policy, diplomatic relations, and international conflict. Students in this program are trained to have expertise in analyzing various kinds of functional and security issues in the international arena.

6) Faculty

- **KIM, Eun Mee** (Dean, Professor, Ph.D. Brown University)
- Research: Political Economy, International Development, Industrial Organization, Globalization, Multiculturalism

- Major Fields of Instructions: International Political Economy, Development Cooperation

- **HOWE, Brendan M.** (Associate Dean, Professor, Ph.D. University of Dublin, Trinity College)
 - Research: International Politics, International Security, Human Security, International Organization, International Governance, Human Rights, Post-Conflict Development
 - Major Fields of Instructions: International Relations, Non-traditional and Human Security

- **KIM, Jasper S.** (Professor, J.D. Rutgers University, School of Law)
 - Research: International Negotiations, International Business Law, International Finance
 - Major Fields of Instructions: International Law

- **LEE, Inpyo** (Professor, Ph.D. Yale University)
 - Research: Macroeconomics, Money and Banking, International Finance, Korean Economy, Economic Education
 - Major Fields of Instructions: International Economics, Korean Economy, Development Cooperation

- **CHO, Kisuk** (Professor, Ph.D. Indiana University)
 - Research: American Politics, International Public Relations, Negotiation and Leadership, Women's Studies
 - Major Fields of Instructions: International Negotiations, International Public Relations, Public Diplomacy, Global Women Leadership

- **CHO, Youngjeen** (Associate Professor, S.J.D. Harvard Law School)
 - Research: International Trade Law, Trade Negotiations, Trade and Development
 - Major Fields of Instructions: International Trade, International Law

- **CHOI, Byung-il** (Professor, Ph.D. Yale University)

- Research: Negotiations and Conflict Resolution, Trade Policy, International Economy, Political Economy of East Asia, Corporate Policy
- Major Fields of Instructions: International Negotiations, International Trade

- **KALINOWSKI, Thomas** (Department Chair, Associate Professor, Ph.D. Freie Universitaet Berlin)
 - Research: International Political Economy, Globalization and Development, Political Economy of East Asia
 - Major Fields of Instructions: International Studies

- **Eun Mie Lim** (Ewha-KOICA Program Director, Ph.D. University of Washington)
 - Research: International Development, Gender and Development, ODA, Research Methodology, Migration
 - Major Fields of Instructions: Development Cooperation, Gender and Development

- **Jinhwan Oh** (Associate Professor, Ph.D. Cornell University)
 - Research: Economic Development, International Trade, Development Cooperation, Regional Economics
 - Major Fields of Instructions: International Trade, Economic Development

- **Jennifer S. Oh** (Assistant Professor, Ph.D., Princeton University)
 - Research: East Asian Politics, Comparative Political Economy, Democratic Governance
 - Major Fields of Instructions International Political Economy, Development Cooperation

- **JUN, Hannah (Heekyung)** (Assistant Professor, Ph.D. Ewha Womans University)
 - Research: International Business/Finance, Corporate Governance, Socially Responsible Investing
 - Major Fields of Instructions: International Business, Corporate Governance and Social Responsibility, Financial Analysis and Planning

- **Alex J. (Jiyoung) Kim** (Assistant Professor, Ph.D. Purdue University)
 - Research: Competitive Strategy, Digital Marketing
 - Major Fields of Instructions: Marketing, International Business

- **Ihn-Hwi Park** (Professor, Ph.D. Northwestern University)
 - Research: International Security, East Asian security, Korea-US Relations, US foreign policy, Cold War History
 - Major Fields of Instructions: International Politics

- **WILLOUGHBY, Heather** (Associate Professor, Ph.D. Columbia University)
 - Research: East Asian Culture and Society, Anthropology, Cultural Studies, Korean Traditional and Popular Culture and Music
 - Major Fields of Instructions: International Culture, International Studies

- **Jean S. Kang** (Associate Professor, Ph.D. Harvard University)
 - Research: International Relations, International Political Economy, International Peace and security
 - Major Fields of Instructions: International History & Diplomacy

- **Seok Weon Lee** (Professor, Ph.D. University of Texas at Dallas)
 - Research: Financial Management, Investment Management, Corporate Finance, Risk Management
 - Major Fields of Instructions: Finance

- **Jai S. Mah** (Professor, Ph.D. Brown University)
 - Research: Economic Development, International Economics
 - Major Fields of Instructions: International Economics

- **Wonseok Woo** (Associate Professor, Ph.D. State University of New York at Buffalo)
 - Research: Strategy Management, International Business
 - Major Fields of Instructions: International Business

- **Hae Lim Cho** (Invited Professor, Ph.D. Ewha Womans University)
 - Research: Development Cooperation, Migration and Development, Multiculturalism, Gender and Development
 - Major Fields of Instructions: Development Cooperation, ODA Management and Evaluation, Research Methods and Fieldwork
- **Jang-Hee Yoo** (Professor Emeritus, Ph.D. Texas A&M University-Economics)
 - Research: Macroeconomics, Regional Cooperation, International Organizations
- **Hung Chong Kim** (Adjunct Professors, Ph.D., Seoul National University)
 - Major Fields of Instructions: Economics
- **Hyekyung Kim** (Invited Professor, M.S. Boston University, Computer Science, M.P.A. Havard Kenndy School Public Administration)
 - Major Fields of Instructions: NGOs, CSOs
- **Hye Yun Park** (Invited Professor, Ph.D. Ewha Womens University)
 - Research: Development Cooperation, Political Economy, Sociology
 - Major Fields of Instructions: Sustainable Development, International Organizations, Regional Integration in Europe and Asia
- **Heisoo Shin** (Invited Professor, Ph.D. Rutgers University)
 - Major Fields of Instructions: Women's rights.
- **Jie-Ae Sohn** (Invited Professor)
 - Major Fields of Instructions: Communications, Media and Development

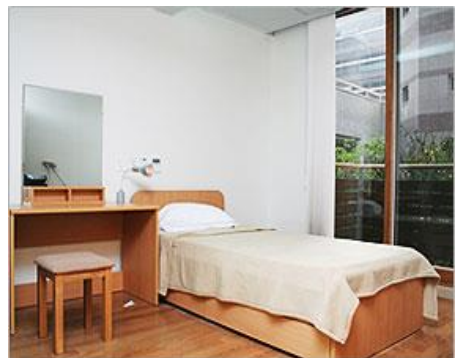
◆**Campus Map (Dormitories No. 16 ~22, 23)**

EWHA WOMANS UNIVERSITY CAMPUS GUIDE



2. ACCOMMODATION

- Ewha Womans University has three types of dormitories: Hanwori Hall for undergraduate students, Graduate Student Dormitory for graduate students and professors, and International House for exchange students and guests. They accommodate 1,600 residents including foreign students and professors from 50 countries all over the world. Graduate Student Dormitory will be arranged for Ewha-KOICA students.
- Ewha Graduate Student Dormitory, designed by Korea's top-notch architect Kim Won, has an easy access from everywhere on campus and is renowned for its beautiful outlook. It serves as a "second-home" to 460 graduate students, international students, students in language programs, and professors & researchers from all over the world.
- Along with the Ewha-Samsung international House(dormitory for exchange students) adjacent to it, Ewha Graduate Student Dormitory makes the little "global village of Ewha." Numerous kinds of foreign language can be heard in this area-from English, French, Chinese to Japanese and many more Asian, African, European languages.
- The dormitory, established in September 2006 to enhance the globalization of Ewha, consists of two 9-story buildings which sum up to 16,597 m² gross area. It has an inner court with two beautiful lawns that provides a rest for all residents. Especially, 12 glass lighting devices create a romantic atmosphere after sunset.



- 68 single rooms, 180 twin rooms for graduate students, 22 rooms for professors or researchers, In total, 460 residents can be accommodated. Each room is equipped with bathroom and internet service.
- Subsidiary facilities such as computer room, seminar rooms, reading rooms, prayer room, lounge, fitness room, laundry & ironing room, and kitchenettes provide a perfect convenience for residents. Events on birthdays, Easter, Thanksgiving are great social offerings of dormitory life. With its excellent facility, the dormitory plays an important role in promoting intercultural communication and Ewha spirit within residents.
- Ewha Graduate Student Dormitory Website: <http://dmtrygr.ewha.ac.kr/>

3. OTHER INFORMATION

A. FACILITIES

1) The Central Library

- The Central Library is acclaimed to be one of the most renowned libraries in Korea. The seven-story building has a capacity of 4,000 seats and 1.3 million volumes, 9,800 periodicals, a digital library and a computerized catalogue system that can be accessed on-line at <http://lib.ewha.ac.kr/>.



- The Ewha library system, including branch libraries(engineering, law, theology, music, and medical) has developed in-depth subject services to provide subject guides, research instructions and information search services for individuals or groups.
- Furthermore, in collaboration with the Ewha community and other academic libraries and through the effective collection and use of vast academic resources, Ewha library strives to optimize research activities and academic outcomes.

- Students can borrow and reserve library books online as well. You may login to the Library website with your student ID and the initial Password (date of birth). Only checked-out books can leave the library. If you violate the regulations, your borrowing privileges may be suspended for six months or revoked entirely.

- Opening Hours: Weekdays 09:00- 21:00/Saturdays 09:00- 15:00
- Closed on Sundays and Public Holidays
- Reading Rooms: 24 hours
(Entrance and exit restricted from 00:00~05:00)
- Facilities
: Computer Lab: 1st floor

- Use of Wi-Fi

- Wi-Fi is available in the whole campus of Ewha for currently enrolled students by following steps.
 1. Choose Wi-Fi.
 2. Choose SSID (Wi-Fi connect EWHA).
 3. Enter ID & Password. (ID: Portal ID, Password : Portal Password)
 4. Set up a wireless networks.
- Contact/inquiry: IT One-Stop Service Center, Office of Information & Communications
(82-2-3277-4777)

- Printer

- Location: Computer Lab (1st floor, 4 printers), Information Room (2nd floor, 4 printers), branch libraries (Engineering, Law, Theological, Music, Medical Libraries) and each computer lab.
- Students have to use a printer card (Korean Won [KRW] 5,000) to print. KRW 50 per page.
- A printer card is available at the store located in the basement of the library.

- Photocopiers

- Location: Copy Room in the basement, and 2nd to 5th floors

- Students need to use a copy card (KRW 5,000) to copy. KRW 20 per page.
- A copy card is available at the store located in the basement of the library or copy room on the 4th floor.
- Scanner
- Location: Computer Lab (1st floor)
- Free of charge

2) Cafeterias and Snack Bars

- There are four different cafeterias on campus. They all serve different menus and the prices differ slightly from one another. Prices normally range from 1,000 won to 3,000 won per person but may further vary depending on the menu of the day.
- **Student Cafeteria:** Located in the Human Ecology Building (생활관, #46 on the campus map), this cafeteria offers various kinds of menus for the students. This is the school's main cafeteria, offering 1,500 seats for students.
- **Dormitory Cafeteria:** Located in the dormitory, this particular cafeteria gives you a choice between Korean style and western style food. The food tickets can be purchased at the kiosk nearby.
- **Helen Hall Cafeteria:** Located in the Helen Hall (헬렌관, #14 on the campus map), you will find it right across the main entrance of the Centennial Library.
- **Lounge O:** Located outside the Helen Hall, this campus café serves soft beverages and snacks such as donuts, pastas, and sandwiches.
- **Dr. Robbin:** Located on the 4th basement level of ECC, this campus café serves soft beverages and snacks such as donuts, pastas, and sandwiches.
- **Food Empire:** Located on the 4th basement level of ECC, this campus food court serves a various sort of food.
- **Cathay Ho:** Located on the 4th basement level of ECC, this Chinese restaurant serves soft beverages and snacks such as donuts, pastas, and sandwiches.
- **International Restaurants near campus:** There are various multicultural restaurants of other countries near the campus.

3) Computer Lab

- Furthermore, in collaboration with the Ewha community and other academic libraries and through the effective collection and use of vast academic resources, Ewha library strives to optimize research activities and academic outcomes.
- Ewha has many computer labs that are available for your needs. In Korea, IBM is more commonly used than Macintosh (Business hours: Weekdays 09:00 – 21:00)
- Location
 - International Education Building, Rm. 901
 - Hak-gwan, Rm. 401
 - Alumnae Building, Rm. 221
 - Law Building, Rm. 345
 - Science Building B, Rm. 207
 - Asan Engineering Building, Rm. 125-1
 - Medical Science Building, Rm. 711
 - Ewha-POSCO Hall, Rm. B154
 - Ewha-Shinsegae Building, Rm. B118
 - Helen Hall, Rm. 303
 - Music Building, Rm. 329
 - Art & Design Building A, Rm. 417
 - Physical Education Building B, Rm. 107
 - Physical Education Building C, Rm. 202
 - Student Union Building, Rm. 110-2
 - Education Building A, Rm. 207
 - Education Building B, Rm. 155
 - Ewha Central Library, Rm. 101
 - Ewha Campus Complex (ECC), Rm. B204, Rm. B341
 - HanWoori Hall Dormitory,
- IT One-Stop Service Center: Located in ECC (Room #B205), the IT One-Stop Service Center offers technical services and advice
 - Service & Advice: 09:00 to 17:00, Mon-Fri (Lunch Hour: 12:00-13:00)

- Help Desk (02-3277-3131, infoserv@ewha.ac.kr)
 - Print Cards: Students can purchase a print card (5,000 won) at a kiosk in the Library, POSCO Hall, Student Union Building, other stores on campus and IEB, etc. You may purchase Print Cards for the use of the IEB computer lab, on the 9th floor of the International Education Building, from the GSIS office (#1104).
 - Photocopier: To use a photocopier, Students need to buy a copy card (5,000 won) at a kiosk. To operate the copier, put the card into a slot, and then press the manual start button.

4) School Supplies

- Location: B1 of Student Union. (#31 on the campus map)
- What you can buy: stationary, toiletries, snacks
- Business hours
 - Weekdays: 09:00-19:00
 - Saturdays: 09:00-14:00- Rental period: One day, one time, up to five hours (can be limited to those with reservations when there are too many applicants.)

5) Post Office

- Location: B1 level of the Alumnae Center (#45 on the campus map)
- Service: General mailing services including mail, parcel, domestic/international EMS, and certain banking services.
- Business Hours: Weekdays 9:00 a.m.-18:00 p.m. Saturday 9:00 a.m.-12:00 p.m.
- For more information, visit <http://www.koreapost.go.kr>.

6) Sports Facilities

▪ Indoor Swimming Pool



- There are various sports facilities on Ewha campus, which students can use for free or at a low fee. Located in the basement of the Alumnae Building (#42 on the campus map), the pool is used for both class and leisure activities. Personal and group lessons are available at a low fee.

Anyone can swim in the pool by paying the admission fee of 5000 won/1 entry. It is open from 07:00 to 18:00 for more information about lessons and monthly schedules, please contact (02) 3277-2555.

▪ **Fitness Room (Yoga, Jazz, Sports dance, etc.)**

- It is located in the basement of the Student Union Building (#38 on the campus map). In the fitness room, yoga, and various types of dances are taught and practiced. Summer School students can sign up for programs at the fitness room during mid-late June. For detailed information on lessons and monthly schedule, please contact (02) 3277-2938.

▪ **Tennis Court (#60 on campus map)**

- It is located in the basement of the Student Union Building (#38 on the campus map). In the fitness room, yoga, and various types of dances are taught and practiced. Summer School students can sign up for programs at the fitness room during mid-late June. For detailed information on lessons and monthly schedule, please contact (02) 3277-2938.



▪ **Squash**

- There are two squash courts in the second basement level of the Student Union Building (#31 on the campus map). For detailed information on lessons and monthly schedule, contact (02) 3277-2938, 3714.

7) ECC (Ewha Campus Complex) Facilities

- With an unusual design that makes underground seem like overground, ECC goes beyond being a building to be a new landscape that harmonizes with the natural background. The ECC project started with the natural background. The ECC project started with the idea that students needed the best campus environment where they could spend more time.
- Service Provided: Students Service Center, Career Development Center/ Ewha Institute for Leadership Development, Office of Registration, Office of International

Affairs, Global Service Center, Lecture rooms, 3 Reading Rooms with 100 seats in total, 41 Seminar Rooms, U-classroom, lecture theater, Art film theater with 2 screens and 272 seats, Performing arts theater with 716 seats etc.

***Shinhan Bank**



[ATM]



[BANK]

- Location: In front of the Gate 3 ECC (B405)
- Contact: (02) 3277-4899
- Business hours: 09:00-16:00
- Money transfer from overseas can be made freely up to US\$20,000 per day. For the exceeding amount, the bank has to report the activity to the government. Also, you need to consult your home bank first if you intend to use their cash (debit) card in Korea.
- Foreign currency and traveler's checks can be exchanged into Korean currency (won) in banks at the airport, foreign exchange banks, and other authorized money exchange places including the on-campus Shinhan Bank. The services are for all residents living in Korea so the initial call pickup will be done in Korean. If you request for English translation, a translator will be provided (contact time needed).

***Linko (School Supplies)**

- Location: ECC Gate 3, turn right (B408)
- Delivery Service (Only for purchase over 30,000KRW)

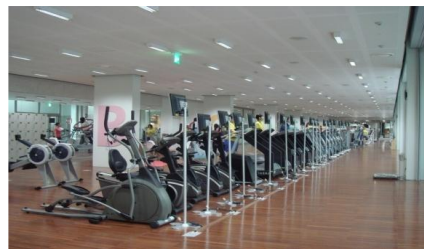
- Contact: (02)3148-6782
- Business hours: 09:00-18:00 (weekdays), 09:00-13:00 (Saturday),
Sunday & holiday (closed)

*** KYOBO Bookstore**

- Location: ECC Gate 3, turn right (B409)
- Contact: (02)3277-1641
- Business hours: 8:30-20:00
- All kinds of books are available.

*** Fitness Center**

- Location: ECC Gate 4, turn right (B422)
- Programs: Health, GX class. They will provide free sports clothes and towel, but
you have to return them after usage.
- Contact: (02)3277-2559
- Business hours:
[Mar-Nov] 06:30-21:30 (Mon-Fri) 09:00 – 17:00 (Sat)
[Dec-Feb] 07:00-20:30 (Mon-Fri) 09:00 – 17:00 (Sat)
Sunday & Holiday (Closed)



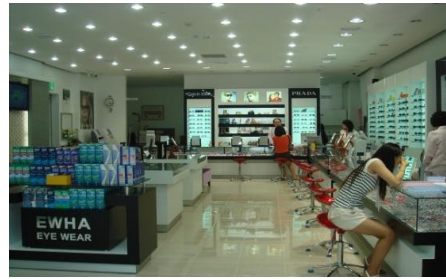
***GS25 Convenience Store**

- Location: ECC Gate 4 (B420)
- Sale: Drinks, food, other commodities
- Contact: (02)3277-4959
- Business hours: 07:00-22:00



***Optical Shop**

- Location: ECC (B418)
- Services: Glasses, Contact lenses
- Contact: (02)3277-4903
- Business hours:
09:00-19:30 (Mon-Fri),
09:00-18:00 (Sat),
Sunday & Holiday (closed)



***IT Service Center**

- Location: ECC Gate 9 and turn left (B205)
- Services: wireless access, laptop rental
- Business hours: 09:00-17:00 (Mon-Fri)
- Contact: (02)3277-4777

***Computer Lab**

- Location: ECC Gate 7 and turn left (B204)
- 60 PCs, Printer, Scanner, Copy machine
- Business hours: 09:00-21:00

8) Other Campus Facilities

- The Student Union Building has computer lab, convenience store, school supplies store, Ewha merchandise store, cosmetics shop, bakery, coffee shop, and more.
- The recreational hall on the first basement level of the Student Union Hall offers classes in aerobics, dance, yoga, squash and jazz dance at a student bargain cost.
- The Ewha-POSCO Hall has a kiosk, stationary store, snack bar and computer labs.

B. HEALTH CARE

1) Student Health Center in Campus

- The University Health Center is a student welfare organization that provides student with health and medical care services to keep the campus healthy. Services provided include health care, medical treatment, environmental hygiene, and health education.
- Ewha GSIS students are given immediately upon the payment of a Student Health Fee (KRW 23,200 per semester as of 2015).
- Members are entitled to use the health and medical care services explained below, which are offered by the Center for free or for a nominal fee.
- Phone number: 02-3277-3181
- Hours: Monday to Friday, 9:00-17:00
- Location: Alumni building 2nd Floor
- Website: <http://euhs.ewha.ac.kr/>

2) Off-Campus General Hospitals near Ewha

* Ewha Mokdong Hospital

Phone	For foreigners	02-2650-5890
	Mobile Number	010-7739-5890
E-mail	41683@eumc.co.kr	
Website	http://eng.eumc.ac.kr/	
Location	Use bus number 163 at the Ewha front gate (Ewha Womans University → Sinchon Rotary → Ewha Womans University Mokdong Hospital)	

* Shinchon Severance Hospital

(Yonsei University College of Medicine)

Phone	For foreigners	02-2228-5800
	Mobile Number	010-9948-0983
E-mail	ihcc@yuhs.ac	
Website	http://www.yuhs.or.kr/en/	

Hours	Morning 10:00-12:00 / Afternoon 14:00-17:00 Saturday 10:00-12:00
Location	From Ewha back gate or Ewha Shinsegae building, you can see Severance Hospital across the street and it is takes within 10 minutes by foot.

*** Seran Hospital**

Phone	For foreigners	1577-1987, 02-737-0181
Website	http://www.seran.co.kr/index.asp (English version not provided yet)	
E-mail	http://www.yuhs.or.kr/en/	
Hours	Weekdays - Morning 10:00-12:00 / Afternoon 13:30-18:00 Saturdays - Morning 09:00-12:30 / Afternoon- Treatment at the emergency center	
Specification	F Recommended when physical examination is required (relatively low expense compared to University hospitals)	
Location	Subway line number 3, Dongnimmun Station; Exit number	

3) Off-Campus Clinics near Ewha

*** Dentist: Ewha-Seoul Dentist (이화서울치과)**

Phone	For foreigners	02-362-2804
Website	http://www.신촌임플란트.kr/	
Hours	Morning 10:00-12:30 / Afternoon 14:00-18:30 Saturdays 10:00-13:00	
Location	About five-minute walk from the Ewha front gate, 3rd floor of Baskin Robbins building	

*** Department of internal medicine: Dr. Han's Clinic (한대석 내과)**

Phone	For foreigners	02-312-7400
Website	http://한대석신장클리닉.com (Only in Korean)	
Hours	Morning 9:30~13:00 / Afternoon 14:30~18:30 Thursday 9:30~13:00 / Saturdays 9:30~13:00	
Location	Near Ewha station exit number 4, 3rd and 4th floor of Yoo-inn building (Shinhan Bank on the 1st floor)	

*** ENT Clinic (Ear, Nose, Throat hospital):**

Shinchon Yonsei ENT hospital (신촌연세이비인후과)

Phone	For foreigners	02-332-0967
Website	http://www.yonseient.co.kr/index.asp	
Hours	Morning 9:00~13:00 / Afternoon 14:00~18:30, Saturdays 9:00-13:00	
Location	Near the Ewha subway station Exit number 5, 4th Floor of Daehyun Building	

*** Eye Clinic: Oseo Eye Clinic (오세오 안과)**

Phone	For foreigners	02-702-5355
Website	http://www.oseoi.com (Only in Korean)	
Hours	Weekdays 9:30-13:00 / Afternoon 14:00-18:30 Saturdays 9:30-13:00	
Location	1 minute walk from Ewha subway station Exit number 6, 2nd floor of Jung Woo Building	

*** Orthopedics: We Kwang Min Orthopedics (위광민 정형외과)**

Phone	For foreigners	02-701-3100
Hours	Weekdays- 9:00-6:10 / Saturdays- 9:00-12:00	
Specification	Doctor speaks fluent English	
Location	Five-minute walk from Shinchon train station, 3rd floor of Camp 21 Building (Opposite to the Shinchon Post Office Building)	

4) Pharmacies near Ewha

*** Yeonhee With-pharm (연희위드팜)**

Phone	02-312-6949	
Hours	Weekdays - 8:30-21:00 / Saturdays- 9:00-18:00	
Specification	It provides language services for international students.	
Location	Across the street of Ewha back gate (next to Paris Baguette)	

*** Han Sarang Onnuri Pharmacy (한사랑온누리 약국)**

Phone	02-364-5455
Hours	9:00-21:00
Location	Right in front of the Ewha Station Exit number 4

VI. ACADEMIC REGULATIONS

1. EWHA-KOICA MASTER'S PROGRAM REGULATIONS

A. Coursework

- Four semesters of full time registration is mandatory. A minimum of 41 credits in total are required to graduate (38 credits of coursework and 3 credits of thesis writing).
- In order to write a master's thesis in the fourth semester, she must fulfill 35 credits by the end of her third semester.
- Students must complete all the required courses to graduate.
- A student with a GPA below 2.50 (on a 4.3 scale) for two consecutive semesters will be automatically expelled from the program.
- Minimum GPA for Functional Concentration Requirements courses is B0 (3.0)

B. Thesis Advisor

- Students are advised to choose their thesis advisor at the early stage of the master's program. Thesis evaluation committee (3 faculty members including the thesis advisor) is organized by the Ewha-KOCA Academic Committee

C. Degree conferment

- Students who pass the final thesis evaluation and complete all the requirements for graduation will be conferred a Master's Degree.

D. Research Ethics Courses

- All thesis writing students should take Research Ethics course online before completing their comprehensive examination.(Mandatory Course: Research Misconduct).

E. The Honor Code

(Ewha Womans University Graduate School of International Studies)

- In keeping with the long tradition of Ewha Womans University as a global leader among its domestic and international peers, the Graduate School of International Studies of Ewha Womans University has adopted the Honor Code as an expression of its commitment to educating leaders in an environment of the highest and best ethical standards. All GSIS students including Ewha-KOICA students must accept responsibility to maintain the Honor Code at all times as follows:

1. *As a student of Ewha Womans University, I will establish and maintain the highest standards in academic work.*
2. *I will not lie, cheat, or steal in any academic endeavor, nor will I accept the actions of those who do. This means that I will:*
 - *not give or receive aid in examinations;*
 - *not give or receive un-permitted aid in any work used as the basis of grading;*
 - *not engage in plagiarism.*
 - *actively encourage others to uphold the spirit and letter of this Honor Code.*
3. *I commit myself to act honestly, responsibly and honorably in all my activities.*

* Procedures

- Official Discipline: Faculty members and the Dean of GSIS will determine disciplinary measures on a case-by-case basis. Standard penalties for a first offense may include: failure or no credit for the course in which the violation occurred, hours of community service, notice to the student's family, a one-semester suspension from the University and/or a combination of these measures. Multiple violations usually will result in expulsion from the University.
- Student Reporting: A student who has direct knowledge of a potential case of academic dishonesty is required to:
 - . Provide a signed, written statement of the observed behavior to the appropriate faculty member and/or to the Dean promptly (guideline: within two weeks of the alleged occurrence); and

- . Provide the name or identity of the person alleged to have committed the violation.
- . Students who knowingly do not fulfill this reporting obligation are subject to sanctions. A reporting student's identity may be kept confidential by the faculty and/or Dean at the student's request. A violating student's confession of an Honor Code violation will be considered as a positive factor in the determination of disciplinary action.

2. DORMITORY POLICY

A. Applicants below will be disqualified for residence in Dormitory.

- a. Applicants who have previously been evicted from Dormitory.
- b. Applicants who have a contagious illness.
- c. Applicants who are not enrolled in graduate courses
(i.e taking a leave of absence from school).
- d. Other applicants who are disqualified by the Director of Dormitory for potential misconduct and/or violation of the dormitory rules.

B. Residence Period

- Residence Period will be within the academic term in which the resident is enrolled as a full-time student. However, an additional term may be granted if the resident is enrolled for thesis/dissertation semester during doctoral courses.

C. Check out

- Borrowed dormitory items should be returned before check out. The check-out form should be turned in to the Director of Dormitory.
- Security deposit may not be requested unless all of the borrowed dormitory items have been returned. Dormitory has the right to retain deposit if it is not requested by the last fiscal day of the academic year.
- Dormitory staff will inspect the rooms prior to check out, and the rooms should be in the original condition from moving in.

D. Security

- Residents should not have any visitors in the rooms without the permission from the Director. Visitors are prohibited to stay overnight. Violation of this regulation may result in eviction

E. Visits

- Visitors are welcome in the guest area until 10:00 pm.

F. Cleaning and fire precaution

- Residents should be responsible for keeping their rooms clean and precaution to prevent fires.
- Negligence of these responsibilities may be grounds for demerits.

G. Advertisements or flier distribution

- Only those advertisements approved by Dormitory office may be posted on designated boards. However, simple personal notes to and from friends among the residents can be freely posted.

H. Indemnification

- Residents will be charged for any damage and/or loss of Dormitory property and room amenities.

I. Disciplinary action

- The Director of the Dormitory may give warnings or order evictions for the following violations:
 - a. Warnings: if the severity of the violation is deemed grave, the demerit points may be imposed with warnings.
 - b. Eviction: If a resident's demerits exceed 10 points according to the demerit guidelines, this may result in eviction.

The following conducts may also result in eviction.

- (a) Status found to be ineligible after moving in.
- (b) Failure to pay all fees.
- (c) Violation of Article 12: Residents should not have any visitors in the rooms without the permission from the Director. Visitors are prohibited to stay overnight. Violation of this regulation may result in eviction.
- (d) Other serious misconducts enough to be evicted.

V. REQUIRED DOCUMENTS

- All documents should be sent to the regional KOICA office or the Korean Embassy (if KOICA office is not available).

- 1) Ewha GSIS Form 1: Document Check List
- 2) Completed Application Form of KOICA
- 3) Completed Application Form 2: Application Form of Ewha GSIS (Type in English and Print out, Hand writing is not acceptable)
The form is available from the Ewha-KOICA website:
<http://ewhakoica.ewha.ac.kr/>
- 4) Ewha GSIS Form 3: Statement of Purpose (250-500 words in English, typed and print out, hand written is not acceptable)
* The Statement of Purpose file (in MS Word) must be also emailed directly to ewhakoica@ewha.ac.kr.
- 5) Essay on Gender Equality and Women Leadership (within 1,000 words, typed and print out, hand written is not acceptable)
*The essay file (in MS Word) must be also emailed directly to ewhakoica@ewha.ac.kr
- 6) Two Letters of Recommendation: Ewha GSIS Form 4
 - One letter of recommendation from a person who has known the applicant enough to write a letter of recommendation with authority (e.g., professor)
 - One letter of recommendation from the present working organization.
- 7) Photocopied bachelor's degree (or if applicable, college diploma(s) or Master's degree) or proof of prospective graduation (applicants must carry the original diplomas to Korea if finally selected)
- 8) Official undergraduate academic transcript (It should include accumulated GPA or total score)
 - Those who attended more than one college must submit official transcripts from all colleges or university-level educational institutions they attended.
 - If the transcript does not indicate GPA, the total score should be converted to percentage (out of 100%) and be stated officially.

- 9) English-proficiency test result from one of the following: TOEFL, TOEIC or IELTS (if applicable)
 - The most recent scores are preferred, and must be less than two years from the application deadline.
 - Exemption: International students whose native language is English or who have received a B.A. or M.A. from an accredited English-speaking institution.
- 10) Certificate of Employment (if applicable)
- 11) A copy of passport (If the passport is not yet issued, please send a copy of applicant's national ID card. As soon as the passport is issued, please send the copy of passport immediately.).
- 12) Two passport-sized photos (One should be attached on the Ewha GSIS application form.)
- 13) All documents (Diplomas, Transcripts, Recommendation Letters, Statement of Purpose, etc.) must be original and be written in English.
 - The deadlines are based on Korea Standard time.
 - The final acceptance for the program will be confirmed after the medical check-up.
 - Doctor's opinion paper about health check-up review
- 14) If applicants need any further information or inquiry, please contact to Ewha-KOICA office by e-mail (ewhakoica@ewha.ac.kr) or phone call (+82-2-3277-3659).

***Important Notes for All Applicants:**

1. All forms and supporting documents should be **typed in English.** Documents in any other language should be accompanied by a notarized English translation.
2. Original documents should be submitted. (If it is unavailable, the originating institution must authorize copies before they are submitted.)
3. If any of the submitted materials contain false information, admission will be rescinded.
4. Applicants whose forms and supporting documents are incomplete or unsatisfactory will be disqualified from the admission process.
5. Applicants should take full responsibility for any disadvantage due to the mistakes or omissions in the application.

VI. CONTACTS

1. CONTACT INFORMATION

1) Korea International Cooperation Agency (KOICA)

· **Program Manager: Ms. Minjeong LEE**

- Phone: +82-31-740-0417
- Fax: +82-31-740-0582
- E-mail: nicemj@koica.go.kr
- Homepage: <http://www.koica.go.kr>

· **Program Coordinator: Ms. Hoomi LEE**

- Phone: +82-31-777-2645
- Fax: +82-31-740-0996
- E-mail: hoomi@global-inepa.org

2) Graduate School of International Studies (GSIS), Ewha Womans University

· **Program Manager: Ms. Alicia Kim**

- Phone+82-2-3277-3659
- Fax: +82-2-365-0942
- E-Mail: ewhakoica@ewha.ac.kr
- Home page: <http://ewhakoica.ewha.ac.kr>
- Address: #1101 Int'l Education Bldg., Ewha Womans University, Ewhayodae-gil 52, Seodaemun-gu, Seoul, 120-750, Republic of Korea

*The schedule in PI (Program Information) can be changeable according to the KOICA and Ewha University Schedule.