

KOICA-SKKU Master's Degree Program in Water Resources Management

August 16 (Wed.), 2017 ~ January 15(Tue.), 2019

Suwon & Seongnam, the Republic of Korea



Korea International Cooperation Agency



Sungkyunkwan University

****Participants are strongly advised to thoroughly read and follow the provided instructions in the Program Information.****

CONTENTS

PART I. KOICA & SCHOLARSHIP PROGRAM	03
PART II. PROGRAM OVERVIEW	08
PART III. HOW TO APPLY	10
1. APPLICATION ELIGIBILITY	10
2. ADMISSION PROCESS	11
3. REQUIRED DOCUMENTS	15
PART IV. PROGRAM CONTENTS	17
1. ACADEMIC SCHEDULE	17
2. ORIENTATION	18
3. CURRICULUM	19
4. EXTRACURRICULAR ACTIVITIES	24
PART V. TRAINING INSTITUTE	29
1. GENERAL INFORMATION	29
2. FACULTY AND RESEARCH UNITS	32
3. ACCOMMODATION	40
4. OTHER INFORMATION	43
PART VI. SUPPORT SERVICE	50
1. TRAVEL TO KOREA	52
2. EXPENSES FOR STUDY AND LIVING	52
3. INSURANCE	53
PART VII. REGULATIONS	55
1. ACADEMIC REGULATIONS	55
2. PARTICIPANT'S RESPONSIBILITIES	58
3. WITHDRAWALS	59
4. TEMPORARY LEAVE	59
5. ACCOMPANYING OR INVITING FAMILY	60
6. OTHERS	60
PART VIII. CONTACTS	61
APPENDIX 1. BRAND NAME OF THE KOICA FELLOWSHIP PROGRAM	62
APPENDIX 2. HOW TO JOIN THE KOICA COMMUNITY	63
APPENDIX 3. HOW TO GET TO THE ICC	64

Part I	KOICA & SCHOLARSHIP PROGRAM
---------------	--

The Korea International Cooperation Agency (KOICA) was founded as a government agency on April 1, 1991, to maximize the effectiveness of Korea's grant aid programs for developing countries by implementing the government's grant aid and technical cooperation programs.

In the past, development cooperation efforts were focused on meeting the Basic Human Needs (BHNs) of developing countries and on fostering their Human Resources Development (HRD).

However, the focus has now shifted to promoting sustainable development, strengthening partnerships with developing partners, and enhancing the local ownership of beneficiaries.

Additionally, global concerns such as the environment, poverty reduction, gender mainstreaming, and population have gained significant importance among donor countries.

Due to the continuously changing trends in development assistance efforts and practices, KOICA is striving to adapt to these changes by using its limited financial resources effectively on areas where Korea has a comparative advantage.

In particular, since Korea has the unique experience of developing from one of the poorest countries in the world to one of the most economically advanced, this know-how is an invaluable asset that helps KOICA to efficiently support the sustainable socioeconomic development of its partner countries.

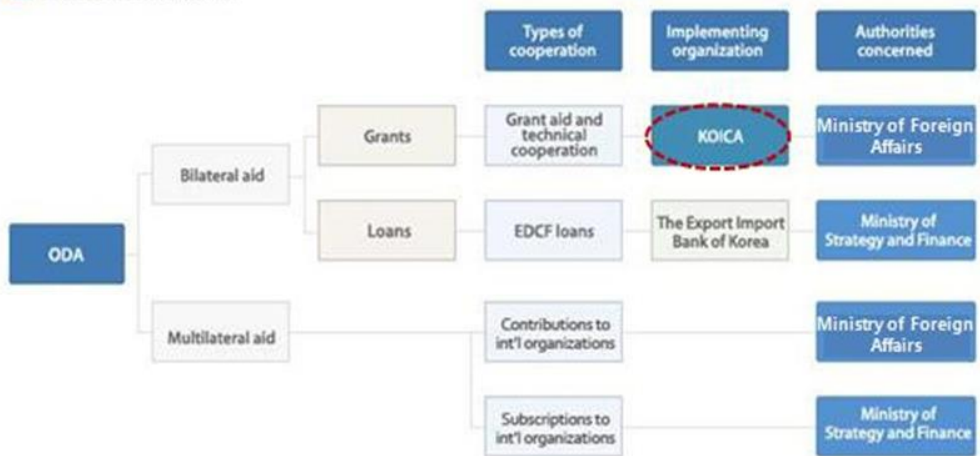
Korea's ODA & Framework

Official Development Assistance (ODA) is composed of grants or concessional loans, which are provided to developing countries with the purpose of promoting economic development and welfare.

Korea's ODA is classified into three areas: 1) bilateral aid (grant aid & technical cooperation), 2) bilateral loans, and 3) financial subscriptions and contributions to international organizations(multilateral).

Bilateral aid is comprised of technical cooperation and various types of transfer (made in cash, goods or services) with no obligation for repayment, and is implemented by KOICA under the authority of the Ministry of Foreign Affairs in the Republic of Korea. Bilateral loans are provided on concessional terms under the name of the Economic Development Cooperation Fund (EDCF), implemented by the Export-Import Bank of Korea under the Ministry of Strategy and Finance. Multilateral assistance is delivered either as financial subscriptions or as contributions to international organizations.

 Korea's ODA system



Korea's Experience and KOICA's Program for Human Resources Development

Human Resources Development (HRD) has been the most important factor in Korea's escape from vicious cycle of poverty and underdevelopment that had existed for many decades. With scarce natural resources, HRD played a vital role in modern Korea's development. Clearly, Korea has emerged as an exemplary showcase of national development powered by HRD.

From its own development experience, Korea came to fully recognize the significance of HRD, specifically about Korea's collaboration with other developing countries. With much experience and know-how in HRD, Korea contributes greatly to the international community by sharing its unique development experience with other nations.

Since its establishment in 1991, KOICA supported a variety of international cooperation programs for HRD, mainly in project-type aid form, focusing on education and vocational training with a concentration in building a foundation for HRD.

The training and expertise-sharing programs help our partner countries build administrative and technical expertise in both the public and private sectors. In order to share experience at the grassroots level, under the name of World Friends Korea, KOICA dispatches Korea Overseas Volunteers to provide services in the fields such as education, regional development, computer science, health care and nursing. Approximately 7,806 volunteers have been dispatched to 57 countries thus far.

The training program provides opportunities to individuals from developing countries to gain first-hand knowledge of Korea's development experience. The purpose of the program is to enable the participants to apply what they learned for the development of their home country or local community. Since 1991, KOICA has offered about 3,695 courses to approximately 53,984 participants from 174 countries. There are a wide range of topics covered in the training program, including administration, economic development, science and technology, information and communication technology, agriculture and health. In order to meet the changing needs of partner countries, KOICA always strives to renovate and improve its HRD programs.

Types of KOICA Training Programs

KOICA offers five major types of training programs:

1. Country Training Program

Tailored programs that are specifically designed for an individual partner country

2. Regular Training Program

Programs that are open to any interested partner countries

3. Special Training Program

Programs that are temporarily available owing to particular commitments of the Korean as well as partner governments

4. Joint Training Program

Programs conducted in partnership with international organizations and other agencies

5. Scholarship Program

Master's degree programs offered to individuals from partner countries

KOICA's Scholarship Program

With a mission to nurture talented students from developing countries, KOICA invites high-caliber students from developing countries and helps them gain professional and systematic knowledge that will play a key role in their home country's development.

To accomplish this mission, KOICA has been operating master's degree courses with leading Korean universities in the fields of economics, trade, women's empowerment, rural development, etc.

In particular, this program has significantly strengthened the relationships between Korea and the students' home countries. Students, who have been given an opportunity to see Korea's experience in poverty reduction and socio-economic development, will gain a deeper understanding of Korea and contribute to the future social, political and economic ties between the two nations.

From 1997 to 2014, the program has assisted a total of 2,210 students. In addition, as of 2015, 388 participants will participate in 19 master's degree programs at 16 Korean universities.

KOICA Scholarship Program is fully committed to the Millennium Development Goals (MDGs) and is determined to expand its efforts to nurture future talents from developing countries to promote their countries' sustainable economic growth and social development.

Part II	PROGRAM OVERVIEW
----------------	-------------------------

1. Program Title: KOICA-SKKU Master's Degree Program in Water Resources Management

2. Duration

- Stay duration: August 16, 2017 ~ January 15, 2019 (17 months study in Korea)
During 17 months in Sungkyunkwan University, students are strongly recommended to complete their thesis.
- Academic duration: August 16, 2017 ~ August 25, 2019 (24 months)
In accordance to university regulations, the diploma will be issued in August 2019.

3. Degree

- 1) Master of Science in Engineering (Academic Degree)
- 2) Master of Science in Water Resources or Master of Science in Environmental Engineering (Professional Degree)

Graduate School of Water Resources, Sungkyunkwan University provides two different degree programs and it is required to choose only one. You can choose the degree type you want to pursue on your application form if you have a preference.

4. Objectives

- 1) To educate governmental officials and those in public institutions of developing countries in the areas of water resources and environmental engineering in order to enhance their comprehensive competency for water resources management
- 2) To cultivate capability of coping with the climate change impact on the water resources and the paradigm change in water industry and water management
- 3) To cultivate the ability to integrate water related disciplines to deal with various tasks of water resources management under changing environment

- 4) To enhance the capability of collecting, analyzing and utilizing the water related information, and applying it to water resources management
- 5) To share the Korean experience in water resources management as well as its application and implementation on water industry and water management

5. Training Institute: Graduate School of Water Resources, Sungkyunkwan University (<http://web.skku.edu/~gswr>)

6. Number of Participants: 20 Government Officials

7. Language: English fluency that requires no translation

8. Accommodations

Students of KOICA-SKKU Master's Degree Program in Water Resources Management will live in Ui-gwan, if it can accommodate all the students, of the Natural Sciences (Suwon) Campus dormitory, known as Bongryonghaksa, which is managed directly by the university. Otherwise, students will live in Shin-gwan of the dormitory.

***Living Conditions**

- Dormitory (Double occupancy)
 - In-room Facilities: Heater and air conditioner, bed, desk, chair, wardrobe, laundry rack, wireless internet router, waste paper basket, brush and shovel
 - Communal Facilities: washing machine, iron, water purifier, microwave oven, TV, vacuum cleaner, laundry drier
- Building-specific Notes
- * Ui-gwan: Toilets and showers are communal by floor. Slippers are to be worn in rooms.
 - * Shin-gwan: Bathroom with shower in each room. Shoes are to be removed in rooms.

Part III

HOW TO APPLY

1. APPLICATION ELIGIBILITY

Candidates should:

- Be a citizen of the Scholarship Program target country
- Be officially nominated by their governments
- Have worked for a minimum of 2 years in public institutions related to water industry or water resources management such as central and local governments, research institutes, and schools/ universities
 - * Exception – Applicants with a ‘development NGO’ background may apply for the program with two letters of recommendation:
 - Your government office; and
 - Korean Embassy, world-widely known NGO, a UN-associated organization, or the KOICA organization within your region
- Have a completed Bachelor's degree in a discipline related to water resources such as civil and environmental engineering, agriculture, chemistry/ chemical engineering, coastal/ ocean engineering
- Have a good command of both spoken and written English in order to take classes conducted entirely in English and to be able to write academic reports and theses in English.
- Be in good health, both physically and mentally. Pregnancy, HIV / AIDS, tuberculosis or any kinds of contagious disease are regarded as a disqualifying condition for the program.
- Not be a person who has withdrawn from KOICA's scholarship program
 - * Person belonging to the institution in which candidates submitted false documents and returned to his/her country arbitrarily in the middle of SP program cannot apply
- Have not participated in KOICA's scholarship program or any of the Korean Government's Scholarship Program before (Master's degree program)

2. ADMISSION PROCESS

Procedure	Dates
Step 1. Closing Date for Application Package Submission	April 12, 2017
Step 2. On-site Interview (KOICA)	April 13-18, 2017
Step 3. Document Screening	April 20-27, 2017
Step 4. Phone Interview	May 15-25, 2017
Step 5. Medical Check-up (local)	May 29-June 16, 2017
Step 6. Final Admissions Notification	July 3, 2017

* The timeline in this table is based on the local time in South Korea and is subject to change

Post Admission

Arrival in Korea	August 16, 2017
KOICA Orientation	August 17, 2017
Orientation, Membership Training	August 18-26, 2017

1) Application Package Submission

- Prepare all required documents for your admission package and fill out the 'Document Checklist'. Check whether all information is correct.
- Submit the application package (including both Sungkyunkwan University and KOICA application forms and other required documents) to the regional KOICA office or Korean Embassy (if KOICA office is unavailable) by the submission date (April 12).

- Original copies should be sent to Sungkyunkwan University before the phone interviews. (If it is unavailable, the originating institution must authorize copies before they are submitted.)

2) On-site Interview (KOICA)

- Participate in an on-site interview by KOICA regional office or Korean Embassy. If an applicant lives in a country where the KOICA regional office / Embassy does not exist or lives far from the capital city, he/she can be interviewed by phone after consulting with the KOICA regional office / Embassy.

3) 1st Round: Document Screening

- Applicants nominated by the regional KOICA office or Korean Embassy (if KOICA office is unavailable) as a result of the on-site interview and have submitted their application packages are considered for document screening.
 - Document screening will be processed by Graduate School of Water Resources, Sungkyunkwan University. Application package as well as the on-site interview result will be thoroughly reviewed by committee of Graduate School of Water Resources, Sungkyunkwan University.
 - Every component included in the application package such as the reputation of undergraduate school, undergraduate GPA, English proficiency, current affiliation, working experience will be evenly evaluated.
 - The result for the 1st round selection will be announced to the applicants and KOICA respectively.
- * It is a policy of the university not to disclose the result of the document screening.

4) 2nd Round: Interview (University)

- An opportunity for a phone interview will be given only to those who pass through the 1st selection document screening successfully.
- Details of the interview including the interviewee list will be sent to the regional KOICA offices and interview arrangements will be made respectively.
- Phone interview schedule will be notified individually by the regional KOICA office or Korean embassy with 2~3 day notice in advance.

- The result for the phone interview will be announced to the applicants individually by KOICA.

5) Medical Check-up (Local)

(Summary) The medical check-up results will identify the applicants' health conditions, and doctors belong to the coordinating agency will verify factors that hamper the completion of the scholarship program.

○ (Coordinating Agency Contact Info)

- Inje University PAIK Hospital
- Person in charge: Ms. Leah OH
- E-mail: inje_paik@daum.net
- Tel: +82-2-2273-0980

○ (Date of medical examination)

- The date of the medical check-up will be notified individually from the coordinating agency after passing the 2nd round successfully.
- The hospital reservation and related information will be notified to the applicants individually by e-mail from the coordinating agency. However, applicants who do not receive any notice until **June 5th, 2017**, should contact the coordinating agency via e-mail or telephone above.

※ Since the coordinating agency will provide guidance on medical check-up for those who passed the 2nd round by e-mail, you need to fill out the correct e-mail address on the application form and check your e-mail in time.

○ (Recipient) Applicants who successfully pass the 2nd round (limited to about 130% of capacity)

- Applicants who successfully pass the 2nd round must receive an additional medical check-up. If you fail to take the examination within the given time, you will be disqualified.
- Even though you are on the waiting list, you must receive the medical check-up.

○ (Medical institution) The medical check-up will be carried out in the medical institution "designated by KOICA" located in the applicant's capital city.

※ Examinations received individually are invalid and non-refundable.

- **(Expenses)** The coordinating agency designated by KOICA will cover all costs to the local medical institution directly, so the applicants should not make separate payments to the medical institution.
 - Please remember that transportation and accommodation fees will NOT be reimbursed.
 - KOICA will not pay for the treatment necessary after the examination.
- **(Result notice)** The local medical institution does not inform the participant of the results of the examination, but if the participants request to the coordinating Agency, they will send it to you directly.
 - You may be asked to receive re-examination by the coordinating agency to certain your medical condition.
- ※ In case of re-examination, it must be done during the re-examination period. (The coordinating agency will inform individually for those who need re-examination.)
 - The results will be provided to KOICA Headquarters, KOICA overseas office as well as embassies, training institution, training support organization, and coordinating agency to progress application process.

Please read carefully before you apply

Changes in other natural and living environments may affect your health as leaving your home country. Among the trainees who have ever entered the country; their physical condition has fallen sharply, resulting in cases where they are hospitalized or had to return home earlier without being able to complete the program. In order to prevent such situation, we apply and judge the standard that does not interfere with the long-term study through the health screening when selecting trainees; we comprehensively judge the applicant's health eligibility based on the result of the medical examination.

Therefore, if you suffered from an illness in the past, or still have it (previous illness); you must state it in the Medical Questionnaire because there are some diseases that are exacerbated by the environment even if it is currently cured. If you do not report the exact details, you may not be able to claim your insurance or receive medical assistance. Besides, you might be sent back to your home country or end up returning your living expenses, travel expenses, etc. to us.

Korea may have higher medical costs than your home country. According to Korea's insurance system, at least 20% of medical expenses are mandatory deductibles by law; which often is covered by the participants themselves. Therefore, we would like to recommend for those who are under medical treatment due to illness, those who need regular medical examinations, and those who are receiving outpatient treatment for tooth problems such as cavities to consult with their doctors and apply to the Master's Degree Program after they are completely cured.

6) Admissions Notification

- Admissions results will be notified to the regional KOICA offices or Korean embassy.
- Registration instructions, course registration and other necessary steps will be guided to individuals.

3. REQUIRED DOCUMENTS

- All documents should be sent to the regional KOICA office or the relevant government office.
- 1) KOICA Application Form
- 2) Sungkyunkwan University Form 1: Application form (Type in English and print out, hand writing is not acceptable)
- 3) Sungkyunkwan University Form 2: Self-introduction (Type in English and print out, hand writing is not acceptable)
- 4) Sungkyunkwan University Form 3: Study plan (Type in English and print out, hand writing is not acceptable)
- 5) Sungkyunkwan University Form 4: Letter of consent for degree verification (Type in and sign all of the underlined blanks)
- 6) Sungkyunkwan University Form 5: Letter of request for degree verification (Type in and sign all of the underlined blanks)
- 7) Curricular vitae
- 8) A copy of the applicant's passport (please check the expired date.)
- 9) Official document indicating parent-child relationship between the applicant and parents: Applicant's Birth Certificate or Household Register proving the parent-child relationship

- 10) Official undergraduate school transcript
 - 11) Official undergraduate school graduation certificate
 - 12) Certificate of Employment (if applicable)
 - 13) Certificate proving English Proficiency: Please submit a score report of a recognized English Proficiency Test such as TOEFL, TEPS, IELTS, CBT, iBT or any other supporting documents which demonstrate appropriate English language proficiency (If applicable)..
 - 14) Doctor's opinion paper about health check-up review
 - 15) Copy of foreign registration card (If applicable).
- ★★ Form 1 ~ 5: Attached herewith

***Important Notes for All Applicants:**

- 1. All forms should be **typed in English** and all the supporting documents should be **in English**. Documents in any other language should be accompanied by a notarized English translation.
- 2. Original documents should be submitted. (If it is unavailable, the originating institution must authorize copies before they are submitted.)
- 3. If any of the submitted materials contain false information, admission will be rescinded.
- 4. Applicants whose forms and supporting documents are incomplete or unsatisfactory will be disqualified from the admission process.
- 5. Applicants should take full responsibility for any disadvantage due to the mistakes or omissions on the application.

Part IV	PROGRAM CONTENTS
----------------	-------------------------

1. ACADEMIC SCHEDULE

Academic affairs	Date (YYYY.MM.DD)	Contents / Remarks
Preparatory Session	2017.08.16– 2017.08.17	Arrival, KOICA Orientation
	2017.08.18 – 2017.08.26	Orientation, Membership Training
Fall Semester (1st semester)	2017.08.28 – 2017.12.22	- Take the Korean Language Class - Seminar (2 Times)
Winter Vacation	2017.12.23 - 2018.02.28	- Take 'Co-operative Education for Water Resources Practice' (requisite) - Study Visit (1 day) - Special Lecture on Korean History and Culture (2 Times, 4 Hours)
Spring Semester (2nd Semester)	2018.03.01 – 2018.06.20	- Seminar (2 Times)
Summer Vacation	2018.06.21 – 2018.08.26	- Take 'Co-operative Training in Water Resources' (for Professional Degree Only) - Study Visit (2 Days & 1 Night) - Special Lecture on Korean History and Culture (2 Times, 4 Hours) - MT
Fall Semester (3rd Semester)	2018.08.27 – 2018.12.21	- Seminar (2 Times) - Attend a Conference - Qualification Examination - Preliminary Presentation of Thesis
Wrap-up Session	2019.01.02 – 2019.01.15	- Course Completion Ceremony and Farewell - Departure
Spring Semester (4th Semester)	2019.03.01 – 2019.06.20	- Thesis Research after Return - Final Defense Presentation (Video Conference)

*The above schedule is subject to change.

**A detailed program schedule will be provided upon arrival.

2. ORIENTATION

When you arrive, first there will be an orientation for 2-3 days for KOICA's Scholarship Program at the KOICA International Cooperation Center (ICC). The orientation aims to provide the participants with useful information on the program as well as general information on living in Korea that you will need during the program. Usually, the orientation is composed of two parts: KOICA's welcoming session. The order of each part is subject to change.

Session	Date	Contents
Arrival	August 16, 2017	Arrival in Korea
KOICA Orientation	August 17, 2017	KOICA's welcoming session

- * Before the dormitory check-in, you will stay at KOICA International Cooperation Center (ICC).

1) KOICA's welcoming session

- In the first part of the orientation, you will have a welcoming session, which includes KOICA's welcoming reception, an introduction of KOICA and a course outline. Through this session, you can have an overview of the Scholarship Program. Lectures about Korean culture, as well as general information regarding daily life in Korea, will be also delivered in this session.

3. CURRICULUM

1) List of Courses for M.S. in Engineering (Academic Degree)

Type	Track	Subject
Requisite		<ul style="list-style-type: none"> • Communications and Presentations on Water Resources • Co-operative Education for Water Resources Practice • Independent Research for Master's Thesis (1) • Independent Research for Master's Thesis (2)
Select at least 4 from this group		<ul style="list-style-type: none"> • Hydraulics • Hydrology • Hydro-meteorology • Hydrologic Modeling: Theory and Practice • Flow Analysis for River Systems • Analysis and Management of River Water Quality • Introduction to Environmental Engineering • ICT-based Smart River Management • Integrated Water Resources Management • Membrane Water Treatment • Environmental Chemistry • Introduction to Water Industry
Selective	Common	<ul style="list-style-type: none"> • Smart Eco City Technology • Scientific Computing: Theory and Practice • Practical Business for Global Water Industry • Sustainable Urban Water Management • Groundwater Modeling: Theory and Practice
	Water Resources	<ul style="list-style-type: none"> • Planning and Design of Multi-purpose Dams • Design of Hydraulic Structures • Water Resources and Remote Sensing • Integrated Flood Risk Management • Statistical Hydrology • Advanced Wave Mechanics • Computational River Hydraulics
	Environmental Engineering.	<ul style="list-style-type: none"> • Water Circulation Plant Engineering • Advanced Biological Water Treatment • Fundamental Bioremediation • Floating Desalination Plant • Desalination Engineering Technology • Advanced Environmental Analytical Chemistry

* There are two major tracks: water resources and environmental engineering

* The above curriculum is subject to change

2) List of Courses for M.S. in Water Resources (Professional Degree)

Type	Subject
Requisite	<ul style="list-style-type: none"> • Communications and Presentations on Water Resources • Co-operative Education for Water Resources Practice • Co-operative Training in Water Resources • Independent Research for Master's Thesis (1) • Independent Research for Master's Thesis (2)
Select at least 4 from this group	<ul style="list-style-type: none"> • Hydraulics • Hydrology • Hydro-meteorology • Hydrologic Modeling: Theory and Practice • Flow Analysis for River Systems • Analysis and Management of River Water Quality • Introduction to Environmental Engineering • ICT-based Smart River Management • Integrated Water Resources Management • Membrane Water Treatment • Environmental Chemistry • Introduction to Water Industry
Selective	<ul style="list-style-type: none"> • Smart Eco City Technology • Scientific Computing: Theory and Practice • Practical Business for Global Water Industry • Sustainable Urban Water Management • Groundwater Modeling: Theory and Practice • Planning and Design of Multi-purpose Dams • Design of Hydraulic Structures • Water Resources and Remote Sensing • Integrated Flood Risk Management • Statistical Hydrology • Advanced Wave Mechanics • Computational River Hydraulics

* The above curriculum is subject to change

3) List of Courses for M.S. in Environmental Engineering (Professional Degree)

Type	Subject
Requisite	<ul style="list-style-type: none"> • Communications and Presentations on Water Resources • Co-operative Education for Water Resources Practice • Co-operative Training in Water Resources • Independent Research for Master's Thesis (1) • Independent Research for Master's Thesis (2)
Select at least 4 from this group	<ul style="list-style-type: none"> • Hydraulics • Hydrology • Hydro-meteorology • Hydrologic Modeling: Theory and Practice • Flow Analysis for River Systems • Analysis and Management of River Water Quality • Introduction to Environmental Engineering • ICT-based Smart River Management • Integrated Water Resources Management • Membrane Water Treatment • Environmental Chemistry • Introduction to Water Industry
Selective	<ul style="list-style-type: none"> • Smart Eco City Technology • Scientific Computing: Theory and Practice • Practical Business for Global Water Industry • Sustainable Urban Water Management • Groundwater Modeling: Theory and Practice • Water Circulation Plant Engineering • Advanced Biological Water Treatment • Fundamental Bioremediation • Floating Desalination Plant • Desalination Engineering Technology • Advanced Environmental Analytical Chemistry

* The above curriculum is subject to change

4) Degree requirements

	Academic Degree	Professional Degree
Credit Requirements	30 or more credits (including 6 credits for thesis research)	33 or more credits (including 6 credits for thesis research)
QE & Thesis Requirements	- Qualifying exam - English skill - Thesis (in English)	- Qualifying exam - English skill - Thesis (in English)
Others	Students must take the 'Safety Training' online course every semester	

* 3 credits per subject

5) Credits taken at each semester

	Credits		Remarks
	Academic Degree	Professional Degree	
1st semester	9	9	Korean Language Class (Non-credit)
Winter	3	3	Co-operative Education for Water Resources Practice
2nd Semester	9	9	
Summer		3	'Co-operative Training in Water Resources
3rd Semester	6	6	• Independent Research for Master's Thesis (1)
4th Semester	3	3	• Independent Research for Master's Thesis (2)

5) Allocation of the thesis supervisor

- Students can choose a thesis supervisor among the professors within his/her major branch. In case there is no professor concerned, the honorary professor, invited professor, or the professor of the other university can be chosen.

6) THESIS EVALUATION

- The committee of the thesis evaluation is composed of 3 members. Only the passers of this process can get the degree.
- Requirements
 - * Fulfillment of the credit requirements before the semester of the thesis evaluation begins, with the average grade higher than B.
 - * Fulfillment of the foreign language requirement and passing the qualification exam.

4. EXTRACURRICULAR ACTIVITIES

1) Korean Language Class

- 32~40 hours in the 1st semester
- Managed by Sungkyun Language Institute

2) Special Lecture on Korean History and Culture

- 3~4 times of 2-hour lecture during the winter and summer vacations

3) Technical Visit

- 1-day trip to Sihwa Tidal Power Plant, Ara Waterway, Yeoju Weir, or a drinking water treatment plant in Seoul metropolitan area during the winter vacation
- 2-day trip to Namgang Dam, Nakdong Estuary Barrage, Busan, Yeongju Dam, and Andong Cultural Village during the summer vacation

4) Seminars/ Special Lectures

- 2 times during each semester

5) Membership Training

- Accompanied by professors and domestic/overseas regular students
- 2-day trip during each August

6) Attending a conference

- Attend a conference held by academic societies

7) Cultural Events of Sungkyunkwan University

- Freshmen Welcome Party
 - * Event Description: A cultural performance event to welcome and introduce newly admitted students to SKKU
 - * Event Period: Every January
 - * Department in Charge: Admissions Management Team



- My Mom is a Freshman

- * Event Description: A cultural program for welcoming newly admitted freshmen and their parents by providing the freshmen the opportunity to feel their first taste of freedom coming into college, and for the parents to feel and be reminded of their own college memories
- * Event Period: Every March
- * Department in Charge: External Affairs Team



- The Smile of Confucius

- * Event Description: SKKU's theatre department offers "Who am I," a play about the life of Shinsan Kim Chang-sook, the founder of SKKU who has left a great mark in Korea's modern history. The play tells the life history of the kind patriot and pioneer who has loved Korea more than anyone else and it makes us question what kind of life SKKU students must pursue in this world we live in.
- * Event Period: March ~ April, September ~ October every year
- * Department in Charge: Offices of Social Sciences/ Arts Department



- Daedong Festival

- * Event Description: A festival for uniting all SKKU students where the student council and university clubs offer various cultural events
- * Event Period: Every May
- * Department in Charge: Student Council



- Countryside Volunteering

- * Event Description: Since the “Farm Love” agreement with 30 farm villages in Chungju in 2006, SKKU has been carrying out countryside volunteer programs during spring, summer and fall.
- * Event Period: Every May, July ~ August, October ~ November
- * Department in Charge: Social Service Center



- Grand March through the Country

- * Event Description: A program for promoting SKKU students' passion, spirit and pride in self, pride in the university and pride in the nation
- * Event Period: Every July ~ August
- * Department in Charge: Student Support Team



- Foreign Culture Experiences

- * Event Description: To promote the global leadership of SKKU students and to increase awareness about the importance of the world's cultural heritages, SKKU offers selected students the foreign cultural experience program during summer break.
- * Event Period: The event is announced every May ~ June and the selected applicants get to visit foreign countries during July ~ August.
- * Department in Charge: Student Council



- University Anniversary Festival

- * Event Description: A cultural festival and event to celebrate SKKU's foundation day (September 29). The student council and university clubs offer various cultural events.
- * Event Period: every September ~ October
- * Department in Charge: Student Council



Part V	TRAINING INSTITUTE
---------------	---------------------------

1. GENERAL INFORMATION

1) About the Graduate School of Water

Graduate School of Water Resources (GSWR), Sungkyunkwan University is the first specialized graduate school in the field of water resources and the water environment. The GSWR, Sungkyunkwan University was founded in 2013 for the purpose of cultivating talents in the field of water resources to cope with to the rapid growth of world water industry. The Graduate School of Water Resources, being operated with the financial support of the Korean Government, aims to build a new model of education in the field of water resources and cultivate professionals with global competitiveness

GWl (Global Water Intelligence) has forecasted that 5.6 % annual average growth of the world water market shall be continued from approximately 480 billion dollars in 2010 to 870 billion dollars in 2025. As the water industry emerges as the blue gold industry, innovative technologies in relation to the water have been developed. Integration of the traditional water management technologies with other technologies such as ICT, BT, and NT are accelerating. Not only the technologies but also the paradigms for water management are changing. Sustainable development and eco-friendly management of water resources are being stressed. We believe that postgraduate level education is essential to cultivate professionals who can integrate various water related disciplines to deal with the changing paradigms in water industry and water management under changing environment

The school has concluded 53 MOUs with government agencies and companies.

- Ministry of Land, Infrastructure and Transport and K-water
- 9 Major construction companies
- 11 Engineering companies
- 31 Water & Environmental Venture companies

In addition, active global research and educational cooperation run through international MOUs with eight universities in Asian region. Currently, the School has about 30 international students and is operating global program with international language.

2) Mission Statement of GSWR

- GSWR is to cultivate professionals in the field of water resources who can integrate various water related disciplines to deal with various tasks of water resources management under changing environment.

3) Location (Natural Science Campus in Suwon)

- ① Subway: Seoul station (line No.1) → Sungkyunkwan Univ. station (50 mins)
 - Sadang station (line No.4) → Geumjeong station → Sungkyunkwan Univ. (35 mins)
- ② Shuttle bus (with fee) ※ It stops running on weekends and holidays (Contact No.: 031-290-5466)
 - Sadang station (Line No.2 and 4): In front of Exit No. 9
- ③ Bus: 62-1, 82-2, 39, 7790, 7800, 3003



※ ADDRESS: 2066, Seobu-ro, Jangan-gu, Suwon, Gyeonggi-do, Korea, 16419

(1) From Incheon International Airport:

- A. Find gate 7 where you can find airport bus stop 7B.
- B. Take the Airport Limousine Bus heading “toward Yeong-tong” at the bus stop.

- C. After getting off at West Suwon Terminal- the first stop after departing from Incheon International Airport.
 - D. When you get off at West Suwon Terminal next to Emart (supermarket), you will need to go around to the front of the building and find the bus stop under the overpass. You may also catch a taxi from here.
 - E. Take bs 62-1, 99 or 99-2. Get off after 3 stops (10 minutes) at Sungkyunkwan University.
 - F. Walk straight down until you see the west gate on your left side.
- (2) By Subway:
- A. Take Seoul Metro Line# 1 and get off at Sungkyunkwan University Station.
 - B. Take exit #2.
 - C. SKKU Suwon Campus is approximately 10~15 minutes walk from the subway station.

2. FACULTY AND RESEARCH UNITS

1) Faculty Members

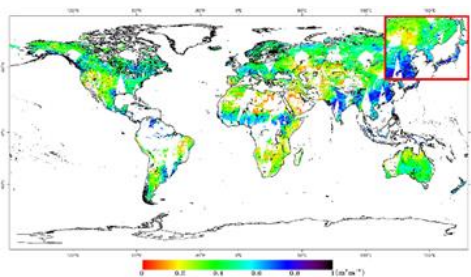
Faculty

	<p>Minha Choi mhchoi@skku.edu Hydrometeorology, Remote sensing http://web.skku.edu/~wrrsl</p>		<p>Nak Kyung Kim nkkim@skku.edu Soil Mechanics & foundation http://civil.skku.ac.kr/yurim.skku.ac.kr/~nkkim</p>
	<p>Am Jang amjang@skku.edu Environmental sensors, Hybrid - Seawater desalination http://wiz.skku.edu/ewater</p>		<p>Jung Lyul Lee jllee@skku.edu Coastal environment modeling, Ocean energy http://wiz.skku.edu/skkuce1</p>
	<p>Kyung Soo Jun ksjun@skku.edu River hydraulics, Hydraulic & hydrologic modeling http://www.skkuhydro.com</p>		<p>Kwang-Myong Lee Leekm79@skku.edu Hydraulic structures, Concrete materials http://wiz.skku.edu/ACTech/</p>
	<p>Hyung-soo Kim sookim@skku.edu Environmental Engineering, Membrane process http://wiz.skku.edu/ewater</p>		<p>Ick Tae Yeom yeom@skku.edu Wastewater advanced treatment, Wastewater reuse http://wiz.skku.edu/environlab</p>

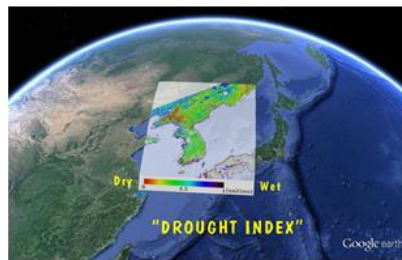
2) Water Resources & Remote Sensing (Prof. Minha Choi)

Fresh water resources on our planet are now drastically becoming scarce natural resources. The fresh water resources stress may be more deteriorated by increasing climate change and population growth scenarios in the world including East Asia. To better understanding of fresh water availability linked to the land surface and the atmosphere, accurate estimation of the water and energy fluxes should be conducted. Dr. Choi's research interests are based on an incessant desire to understand those natural hydrologic phenomena that frequently cause floods and droughts and significant damage to people and property. A main research goal is to improve knowledge of land surface hydrologic processes and modeling by integrating remotely sensed data and ground-based data with an emphasis on the soil-vegetation-atmosphere dynamics over a range of scales. Toward this goal, the role of soil moisture and evapotranspiration directly related to many hydrometeorological variables considering spatial-temporal variability and the quantification of uncertainty within the context of the satellite footprint have been sought.

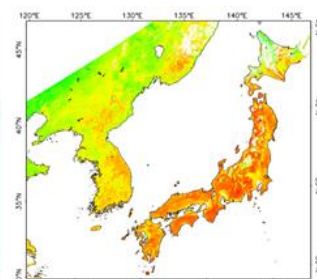
Land surface-atmosphere interactions, experimentation, remote sensing, model assimilation, ArcGIS, ecohydrology



Soil Moisture



MODIS-based Drought



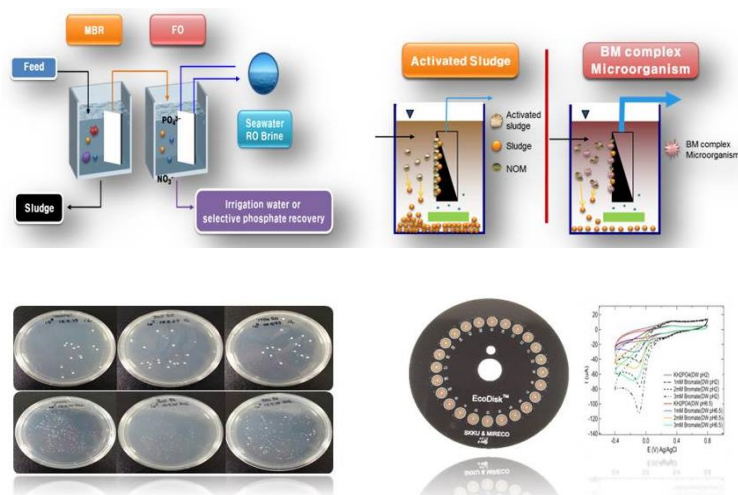
Evapotranspiration

3) Smart Water Advanced Treatment (Prof. Am Jang)

The Smart Water Advanced Treatment (SWAT) lab focuses on the development of sustainable water and wastewater treatment systems, membrane based desalination, and environmental pollution monitoring using state-of-the-art lab chip (LC) sensors, including pH, ORP, DO, nitrate, phosphate, and heavy metals. Major research interests include as follows:

- Water treatment: advanced membrane bioreactor (MBR) with aerobic granules; low cost and high performance ceramic and polymer membrane filtration for potable water production; adsorption materials for pollutions removal; biological nutrient removal (BNR)
- Water supply and resource recovery: RO desalination; water reuse; phosphate recovery from wastewater using forward osmosis (FO) and MBR
- Pollution monitoring: membrane fouling; the development of portable environmental LC sensors; environmental biofilm monitoring with microelectrodes and molecular techniques (i.e., fluorescent *in situ* hybridization, FISH); harmful algal blooms; biotoxicity of engineered nanomaterials

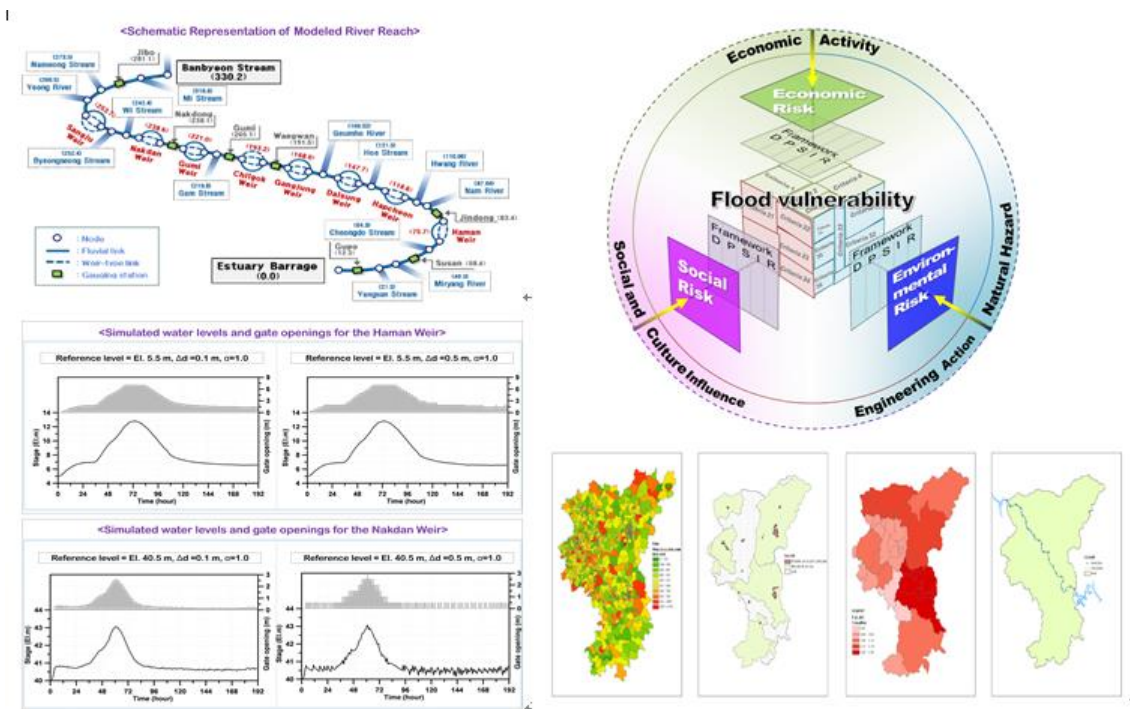
Forward osmosis, membrane bioreactor, ceramic membrane, electrofloatation, NPs toxicity, lap chip sensors



4) Water Resources Engineering Lab. (Prof. Kyung Soo Jun)

Climate change, urbanization and increasing global population are posing serious threats to our humanity's water security. Solving the challenges of water resources management is one of the fundamental goals of this generation. Prof. Jun is interested in quantitative and qualitative analysis of water resources including risk assessments for hazard, which is essential for water resources management. Numerical models have been developed and applied to solve various problems related to the water resources. In particular, his laboratory has developed flood computation model for major Korean rivers, and has very successfully transitioned the model for a wide range of applications.

Computational river hydraulics, environmental hydraulics, hydraulic and hydrologic modeling, flood risk analysis, water quality modeling



5) Environment-Water Advanced Technology Engineering Research (Prof. Hyung-soo Kim)

Prof. Kim's lab opened in 1995 and prof. Kim has played a role as a 1st generation pioneer of membrane process in water treatment in Korea. Advanced water treatment process and membrane processes have been adopted to overcome limits of conventional drinking water treatment system. Hybrid waste water treatment system which combines biological treatment and membrane processes was developed for stable and safe wastewater treatment system. Recently, with facing water shortage, wastewater reuse and desalination processes are actively studied to secure the alternative water resources. Especially, proving the membrane fouling and technologies of maintenance of the membrane processes are prof. Kim's special interests.

Membrane process, integrity test, membrane fouling control, maintenance of membrane process, practical pilot-plant scale membrane system operation

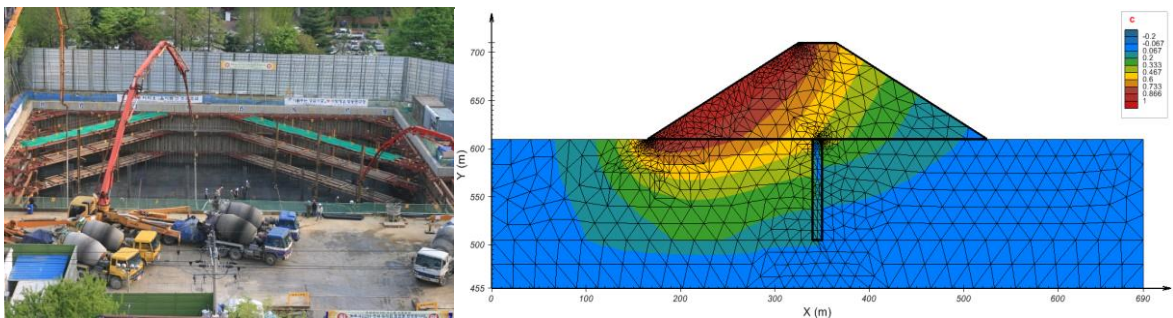


6) Foundation System Research (Prof. Nak Kyung Kim)

Foundation system consists of foundations in buildings, earth structures, geo-hydraulic structures and others related to water resources. In water resources engineering, earth dams and hydraulic structures have been focused for centuries for the stability of those water resources related structures. Water-soil interactions, seepage hydraulics and new foundation support systems have been studied recently.

In our lab, research areas covers the new geotechnical foundations on water bearing soil condition, numerical analysis on foundation systems, groundwater problems in excavations, and earth dams design and analyses. Research goal is mainly a development of new foundation support to increase the economics and stability of the geo-hydraulic structures. The innovative prestressed wale system was developed to solve the earth support problem in large excavation in soft and water bearing soils. The system has been applied to the many construction projects and has performed successfully. The seepage pressures on slurry wall has been analyzed and the design water pressures were suggested. Ongoing research is the smart helical reinforcement system on very soft clay subsoil.

Geo-hydraulic structures, earth structures, foundation system, numerical analysis, new foundation design, instrumentations on foundation behavior

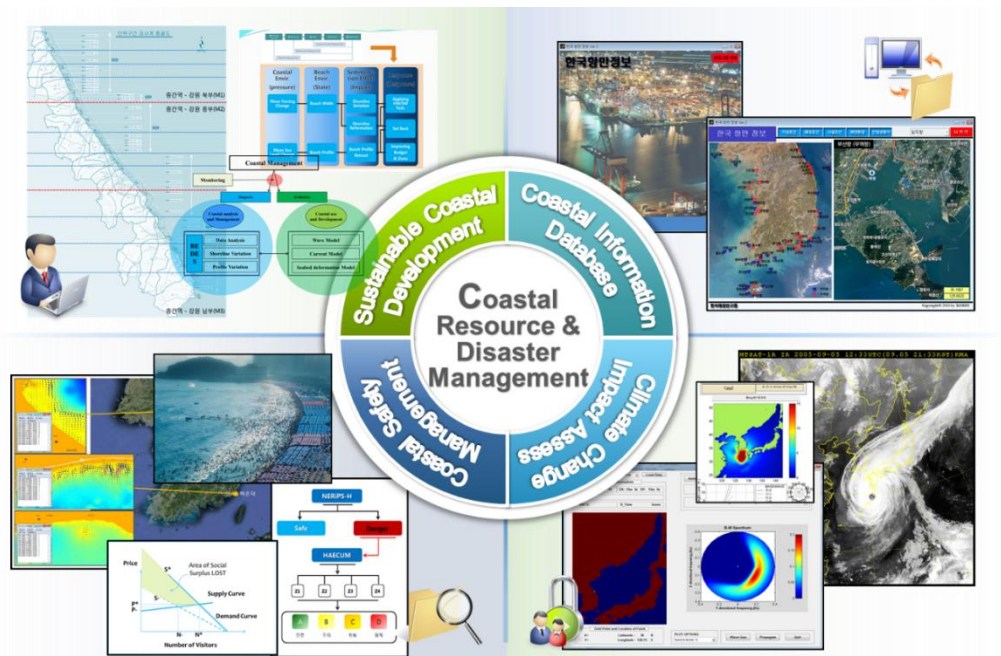


7) Coastal Resource and Disaster Management (Prof. Jung Lyul Lee)

Recent coastal zone is vital to the well-being of our country. It is home to roughly half of the Korea population and supports ecologically important habitats and natural resources. It also boasts vibrant harbors and fishery ports and many other important industries.

The lab provides the fundamental studies and strategies for protecting, restoring, and responsibly developing diverse coastal communities and resources. To support the goals of the Korean ICZM, it also takes a comprehensive approach to coastal resource management—balancing the often competing and occasionally conflicting demands of coastal resource use, economic development, and conservation.

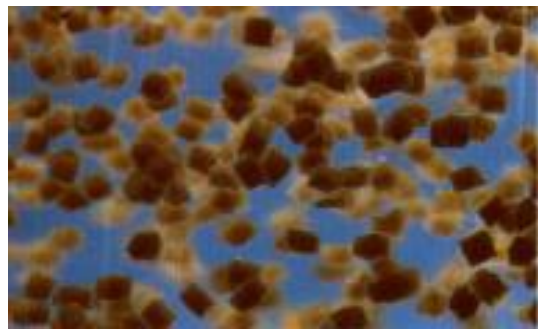
Understanding coastal environments; Assessing economic values of natural resources; Protecting valuable resources from coastal hazards; Managing development in high hazard areas; Providing sustainable solutions on coastal development



8) Emerging Contaminants Research (Prof. Ick Tae Yeom)

ECRL (Emerging Contaminants Research Laboratory) has carried out research about advanced waste water and sewage treatment technology, reuse technology, specific substances harmful to the quality of water and micro emerging contaminants treatment. Especially, in 1990's, the Ministry of Environment has regulated specific substances harmful to the quality of water designated as water pollutants which is directly and indirectly harmful to health of human, animal and plant life. For ten years from now, it has a plan to increase specific substances harmful to the quality of water from nineteen to fifty, hence, our laboratory has been carrying out researches on treatment plant which maximize biological degradation by using existing activated sludge and immobilized cell treatment which enable microorganism to illuviate for high concentration, MBR and so on. Also, our laboratory carries out long-term projects with the Zero Emission Center, the Ministry of Environment and the National Institute of Environmental Research which designates specific substances harmful to the quality of water and emission standard of them.

Continuous stirred tank reactor, treatment using immobilized cells.



3. ACCOMMODATION

Students of KOICA-SKKU Master's Degree Program in Water Resources Management will live in Ui-gwan of the Natural Sciences (Suwon) Campus dormitory, known as Bongryonghaksa, which is managed directly by the university. Otherwise, students will live in Shin-gwan of the dormitory.

1) Facilities

- Double occupancy
- In-room Facilities: Heater and air conditioner, desk, chair, bed, wardrobe, laundry rack, wired and wireless internet router, waste paper basket, brush and shovel
- Communal Facilities:
 - * Free to use: washing machine, iron, water purifier, microwave oven, TV, vacuum cleaner
 - * Requiring payment: Laundry drier (₩1,000 per use), printer (₩40 per page)
- Building-specific Notes
 - * Ui-gwan: Toilets and showers are communal by floor. Slippers are to be worn in rooms.
 - * Shin-gwan: Bathroom with shower in each room. Shoes are to be removed in rooms.



Ui-gwan (two people one room)



Shini-gwan (two people one room)

2) Admission Period Assistance Details

- (1) Receiving parcels: If you send parcels to the dormitory 3-5 days before the check-in date then they will be stored in the parcel storage room on delivery. (However, please be aware that parcels may be damaged or lost. Also, please write your name and phone number on the box.)
- (2) Borrowing a cart: You can borrow a cart in each dormitory, but due to limited space in the elevator, it may be crowded, and because of many people it may take a long time. It will be easier if you bring your belongings in wheeled suitcases, or you can prepare your own small cart.

3) Price to Use the Cafeteria, and How to Apply for Meal Tickets

- (1) Meal tickets bought at the vending machine or meals bought by card at the counter cost ₩3,600 each. (as shown in the "No meals chosen" column in the table below)
- (2) For 2016 Fall Semester, meal tickets of 2 days are excluded due to Korean Thanksgiving Day (Holiday).
- (3) You can use a discounted rate if you choose a meal plan when applying for admission.

Options	Purchase	1 meal per day	1.5 meal per day	2 meal per day	2.5 meal per day
Number of meals in the semester (111 days)		111	167	222	278
Price per meal	₩3,600	₩3,200	₩2,950	₩2,700	₩2,600
Price for the whole semester		₩355,200	₩491,170	₩599,400	₩721,500

- ▶ The total number of tickets for the 1.5 and 2.5 plans are rounded up.
- ▶ The total price for the 1.5 plan is rounded down.

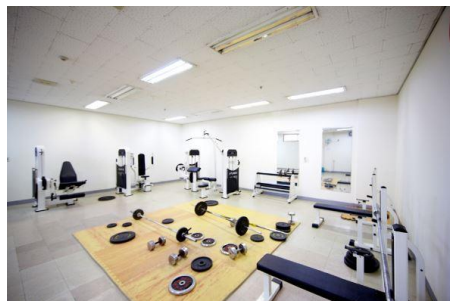
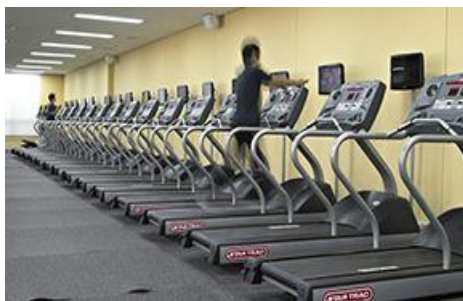
4) Changing Meal Plan (adding and refunding tickets)

- (1) To give opportunity to change the number of tickets after experiencing the cafeteria at the beginning of the semester, there will be a time period for changing the number of tickets once during the semester.
- (2) There will no opportunity to change the number of tickets either before or after this period, and there will be no refund for unused meal tickets at the end of the semester.
- (3) Please refer to notices for details on the period and exact price.

5) Other Facilities and Benefits

(1) Gym and Fitness Facilities

- Fitness room in Ingwan and Jigwan, stretching room in Yegwan, ping-pong room in Jigwan (open and free to use)
- Fitness room in Shingwan can be used with monthly registration (30,000 won per month, registration on a first come, first served basis)



(2) Life Culture Seminars, Hobby Seminars

- Seminars in humanities, social sciences, sciences, arts, history and various other topics each semester
- Experiential learning program for Korean and foreign students living in the dormitory
- Seminars on yoga, hand-drip coffee, cooking, guitar, photography, etc. for each semester

6) Dormitory Homepage

- Address: <http://dorm.skku.edu>
- Click 'English' button on the right-top

4. OTHER INFORMATION

1) Lecture Room



Lecture Room

Most of the lectures will be given in the Lecture Room 26217A which is located in 2F, Engineering Building 2.

2) Seminar Room



Seminar Room

Seminar Room 27218 is located in 2F, Engineering Building 2.

Various seminars related to water resources will be held in the seminar room.

3) Library



Samsung Library

Library is located next to the Natural Sciences Hall.

B1. Reading room

1st floor. Computer lab.

2nd floor. Visual Media room, Group study room

3rd floor. Reference library

4th floor. Reading room

5th floor. Community zone



4) Computer Lab



Computer Lab

There are numerous computer labs for students in the campus.

Computer lab for the department, 27221 is located at 2F, Engineering building

5) Dining on Campus



Student Cafeteria 1

The cafeteria is located in B1, Engineering Building 2.

Open from 7:00 to 18:30.

Price: 1,500 ~ 3,500 KRW



Student Cafeteria 2

The cafeteria is located in 1F, Student Union Building 2.

Open from 11:00 to 18:30

Price: 2,900 ~ 4,000 KRW

6) Book Store



Book Store

The store is located in 2F, Welfare Hall.

Assortment of textbooks and others

Open from 09:00 to 18:00

7) Convenience Store



Convenience Store

The store is located in 1F, Welfare Hall.

Open from 9:00 to 19:00

Assortment of daily necessities and office supplies

8) Café



Garden Bridge Café (1F, Research & Business Center)

The café sells different types of beverages and cakes.

Price: 2,000 ~ 5,000 KRW

Café NU (1F, Engineering Building)

The café sells different hot and cold beverages, cakes and cookies

9) Convenience Facilities

To offer conveniences to its university members and visitors, SKKU is equipped with various welfare facilities. The campus welfare and convenient facilities include a book store, dining halls, a post office, a bank, ATM machines, coffee shops, a gift shop, a fitness center as well as campus rest areas and women's lounges.

PART VI. SUPPORT SERVICE

Category	Facility Name	Support	Location	Contact Info
University Life	Lost & Found	Student Support Team	Administration Office	290-5034
Academic Support Facilities	Photocopy Office	Photocopy room	B1, Samsung Library	290-5449
	Photocopy Office	Photocopy room	1F, Engineering Bldg. 2	290-5460
Women's Lounge	Student Union Bldg. Women's Lounge	Female student-only rest area	2F, Student Union Bldg. (03211)	
	Engineering Bldg. 2 Women's Lounge	Female student-only rest area (equipped with sleeping rooms)	B1, Engineering Bldg. 2 (26B04)	
	Science Bldg. 2 Women's Lounge	Female student-only rest area (equipped with sleeping rooms)	3F, Natural Sciences Hall (32355)	
	Biotechnology Hall Women's Lounge	Female student-only rest area (equipped with sleeping rooms)	3F, Biotechnology Hall (62305)	
	General Studies Bldg. Women's Lounge	Female student-only rest area	3F, General Studies Bldg. (51317)	
	Semiconductor Hall Women's Lounge	Female student-only rest area (equipped with sleeping rooms)	2F, Semiconductor Hall (400205)	
	Pharmacy Hall Women's Lounge	Female student-only rest area (equipped with sleeping rooms)	1F, Pharmacy Hall (530128)	
	Medical School Bldg. Women's Lounge	Female student-only rest area (equipped with sleeping rooms)	1F, Medical School Bldg. (711113)	
Financial Facilities	Post office	Banking and mail services	2F, Welfare Hall	290-5445
	Bank	Woori Bank (financial services)	2F, Welfare Hall	290-5434

10) Health Care

(1) Health Care Center

To promote health and well-being of our students and faculty, the University's Health Care Center offers services in early detection of diseases, treatment and treatment placement, health counseling, student health checkup and etc.

(2) Special Clinics

- Obesity Counseling Clinic

- To prevent and manage obesity, the clinic assesses and analyzes individual's body composition and offers diet plans, exercise plans and continuous care and counseling.
- All obesity-related counseling and treatments are free of charge.

- Lifestyle Diseases

- The clinic offers continuous care and counseling for lifestyle diseases such as high blood pressure and diabetes through detailed tests like blood pressure and blood sugar tests.
- Monday ~ Friday, 9:00~17:30

- Anxiety and Depression Counseling

- In modern society, where people live under excessive stress and environmental stimulations, most people suffer from some kind of physical or psychological problem. Visiting psychiatric counseling for mental stress is as natural as visiting internal medicine or surgical hospitals for physical pain.
- If you are going through academic or interpersonal relationship problems because of your anxiety or depression, or if you are suffering from anxiety or depression because of your academic or interpersonal relationship problems, timely and proper treatment or counseling can improve your condition significantly.
- If you're feeling anxious or depressed or somehow different, we advise you to get counseling from the university health center's psychiatric department.
- Monday 13:30~16:30, Friday 09:00~12:00 (biweekly)

(3) Smoking Cessation Counseling

To reduce smoking within the population, and to ultimately prolong life and improve quality of life, SKKU offers various smoking cessation promotions and education for the people of SKKU to increase the general awareness and the

importance of good health. The program schedule is announced for participant recruitment on notice boards.

11) Medical Facilities in the Vicinity of the Campus

Type	Medical Facility	Location	Business Hour	Landmark	Phone Number
General	Ju Internal Medicine 주내과의원	Yuljeondong 율전동	Weekday: 9:00~18:00 Lunch: 13:00~14:00 Saturday: 9:00~13:00	Yulcheondong Community Service Center 율전동 주민센터	031-227-7555
	Yeonse Internal Medicine 연세내과의원	Yuljeondong 율전동	Weekday: 9:00~18:00 Lunch: 13:00~14:00 Saturday: 9:00~13:00	Seven Eleven Convenience Store 세븐일레븐 편의점	031-294-9797
	Hanaro Internal Medicine 하나로의원	Jeongjadong 정자동	Weekday: 10:00~19:00 Lunch: 13:00~14:00 Saturday: 10:00~16:00	Myeong-in Elementary School 명인초등학교	031-269-4762
Ophthalmology	Seongdae Ophthalmology 성대안과	Yuljeondong 율전동	Weekday: 9:00~18:00 Saturday: 9:30~14:30 Lunch: 13:00~14:00	Sungkyunkwan University Station 성균관대역	031-298-8275
	Hwain-oseo 화인오세오안과	Cheoncheondong 천천동	Weekday: 9:30~18:00 Wednesday: 9:30~13:00 Saturday: 9:30~15:00	Lotte Mart	031-245-5350
Otolaryngology	Good morning Otolaryngology 굿모닝이비인후과	Yuljeondong 율전동	Weekday: 9:00~19:00 Lunch: 13:00~14:00	Mcdonalds 맥도날드	031-294-7545
	Duri Otolaryngology 두리이비인후과	Cheoncheondong 천천동	Weekday: 9:00~19:30 Lunch: 13:00~14:00 Saturday: 9:00~16:00 Lunch: 13:30~14:00 (Sun/Holiday): 10:00~13:00	Lotte Mart	031-247-2275
Dental	Chammiso Dental 참미소치과	Yuljeondong 율전동	Weekday: 10:00~18:00 Saturday: 9:30~12:30	Baskin Robbins 31 배스킨 라빈스	031-293-2875
Dermatology	Hwain Dermatology 화인피부과	Cheoncheondong 천천동	Weekday: 9:25~18:30, Lunch: 12:40~14:00 Saturday: 9:20~15:30	Lotte Mart	031-269-2975
Orthopedics	Cham joeun Orthopedics 참조은정형외과	Yuljeondong 율전동	Weekday: 9:00~18:00 Saturday: 9:00~14:00 Lunch: 13:00~14:00	Baskin Robbins 31 배스킨 라빈스	031-252-8094
	Sae yeonse Orthopedics 새연세정형외과	Jeongjadong 정자동	Weekday: 8:30~18:00 Saturday: 8:30~13:00	Homeplus Express 홈플러스 익스프레스	031-242-3375

12) Medical Information and Emergency Services

(1) Medical Information Center

- The services are for all residents living in Korea. The initial call pickup will be made in Korean. If you request for English translation, a translator will be provided (contact time needed). During the switchover time, prerecorded music and Korean will be relayed over the phone.
- Wait patiently until the switchover and then you will be able to receive a step-by-step instruction in English on the required medical condition. Your emergency call will be translated by a 3rd translating party between you and the professional medical staff. This service is not like 119, but is a hotline for a step-by-step process of dealing with sudden ailments that may not require an ambulance (although you can request an ambulance).

(2) 119 Fire & Emergency Services

- The 119 Emergency & SOS Service is similar to the American 911 service. In case of fire or a medical emergency call to this number. The service will immediately send a fire truck or an ambulance to the required location. The service is for all residents, Korean and foreign. The initial pickup will be made in Korean. If you request for English translation, a translator will be provided (contact time needed). Wait patiently until the switchover and then you will be able to inform the medical staff of the patient's condition and request a fire truck or an ambulance.

Part VI

SUPPORT SERVICE

1. TRAVEL TO KOREA

A. KOICA arranges and pays for the participant to travel to and from Korea. The participant is to travel by the most direct route between Incheon International Airport and a main international airport in the participant's home country. KOICA will cover economy class, round-trip airfare.

B. If a participant wants to change the flight itineraries, they should pay the additional airfare. The participant is responsible for the issuance of an appropriate visa (which must be the 'Study Abroad Visa [D-2]) necessary for this Scholarship Program. Should the participant be unable to get the appropriate visa before the date of entrance, KOICA is unable to provide any assistance and, if it proves necessary, participants may have to return to their respective countries to get the visa issued at their own expense.

2. EXPENSES FOR STUDY AND LIVING

The following expenses will be covered by KOICA during the participant's stay in Korea.

- A. Tuition fee
- B. Accommodation sharing a room basis (mainly the dormitory of a training institute)
- C. Living & Meal allowance KRW 999,000 per month (this includes meal, books and study supplies if needed.)
- D. Overseas travel insurance, etc.

In addition, participants may be invited to a special event organized by KOICA with the aim of promoting friendship among each other and understanding about Korea during the program.

3. INSURANCE

- Participants who have entered Korea have been covered by “New group injury insurance” policy in case of illness or accident.
 - ※ The insurance coverage period is from the time of arrival in Korea to the time of departure.
 - ※ We encourage you to read about the coverage of insurance and deductibles carefully.
- KOICA is encouraging the participants to get National Health Insurance, which can reduce the deductibles by up to 80%.
- Medical expenses may be expensive due to the obligation to pay these deductibles.
- Chronic disease (medical expenses for previous illness; high blood pressure, diabetes, obesity, etc.) pregnancy, and mental illness will not be reimbursed.

During the program, participants will be covered by the “New group accident insurance.” The insurance covers expenses for medical treatment and hospital care caused by diseases or accidents within the scope and limit of insurance coverage. Participants should first pay by themselves and then be reimbursed for the expenses later, on the condition that the case falls under the coverage of the insurance.

According to Korea's insurance system, at least 20% of medical expenses are mandatory deductibles by law; which must be covered by the participants themselves. Therefore, we would like to recommend for those who are under medical treatment due to illness, those who need regular medical examinations, and those who are receiving outpatient treatment for tooth problems such as cavities to consult with their doctors and apply to the Master's Degree Program after they are completely cured.

- Limit of Coverage & Deductibles

Collateral	Limits of coverage	Note
Death	100,000,000	-
Permanent disability by accident	100,000,000	-
Hospitalization	50,000,000	Deductibles
Outpatient medical expenses	250,000/ day	Deductibles
Prescription fee	50,000/ day	Deductibles
Liability	10,000,000	KRW 200,000 Deductibles
Acute myocardial infarction treatment fee	10,000,000	Once
Stroke treatment fee	10,000,000	Once
Special terms for persons killed or wounded for a righteous cause	100,000,000	

- ※ Limited to cases of injury and illness
- ※ Medical checkup at the participant's option and the fee for a medical certificate and diseases caused by pre-existing medical conditions, etc. are not covered by the insurance (Refer below to the category not covered by the insurance).
- ※ The insurance coverage is limited to the treatment incurred within Korea.
- ※ The insurance shall cover the medical expenses at actual cost within the limit of the medical insurance subscription amount per case (for details, refer to the insurance policy)

. Deductibles

* Outpatients and prescription fee

Classification	A	B	Deductibles
Clinic	10,000	20%	The larger amount between A and B
Hospital	15,000	20%	The larger amount between A and B
University hospital, level 3 hospital	20,000	20%	The larger amount between A and B
Prescription fee	8,000	20%	The larger amount between A and B

* Hospitalization fee

Classification	Deductibles
Hospitalization	20%

- Procedures, Services and Diseases Not Covered by the Insurance

- * Diseases that participants already had before arrival in Korea
- * Medical check-up, vaccination, nutritional supplements, and tonic medicines
- * Dental care and Oriental (Chinese) medicine: Uninsured items and prosthetic dentistry Hospital treatment
- * Fees for issue of certificates
- * Costs that are not related to treatments and medical check-up costs that are not related to a doctor's diagnosis.
- * Orthopedics
- * Equipment and consumables (e.g., wristbands and cast shoes)
- * Mental disease and behavior disorder
- * Congenital cerebropathy
- * Herbal remedies
- * Obesity
- * Urinary diseases: Hematuria and urinary incontinence
- * Diseases of the rectum and anus
- * Tiredness and fatigue
- * Freckles, hirsutism, atrichia, canities, mole, wart, pimple, and skin ailments such as hair loss due to aging

* Medical expenses caused by treatments for enhancing appearance (e.g., double-eyelid surgery)

※ Detailed information will be provided upon arrival

- National Health Insurance

According to Korea's insurance system, at least 20% of medical expenses must be paid by participants as mandatory deductibles by law. KOICA is encouraging the participants to get National Health Insurance, which can reduce the deductibles by up to 80%. If you have an illness that you have suffered in the past, or still ill (previous illness), you are recommended to join the National Health Insurance. If you are not covered by national health insurance, high medical costs may arise.

□ Dentistry

- Korean medical expenses of dental system diseases are very expensive
- Medical expenses for dental diseases are not reimbursed

Korean medical expenses of dental system diseases are very expensive. However, dental treatment costs are usually not covered by insurance and often exceed the cost of living. Therefore, it is recommended that you check your tooth condition beforehand and finish both tooth check-up and medical treatment before entering Korea.

※ For dental care, no costs are covered by KOICA or “New group accident insurance.”

Part VII	REGULATIONS
-----------------	--------------------

1. ACADEMIC REGULATIONS

1) Compliance with University Policies

Registration as a student constitutes a commitment by the student to abide by University policies, rules and regulations, including those concerning registration, academic performance, student conduct, health and safety, use of the libraries and computing resources, university facilities, and the payment of fees and assessments. Some of these are set forth in the student handbook while others are available in relevant University offices. Students should take responsibility for informing themselves of applicable University policies, rules and regulations.

2) Attendance and Absenteeism

Students are expected to attend all of the classes he / she has registered for each semester. Any student who, without a good reason, has failed to attend class for at least 13/16 of the total class hours shall be prohibited from sitting for the exam.

- A. In the event a student is absent for any of the reasons below, the student must notify the appropriate department, faculty, and dean and get approval in advance:
 - Death of an immediate family member (grandparents, parents, siblings) or equivalent circumstance
 - Academic planning, study visit, on-location training, etc.
 - Participation in seminars or conferences (including international ones) as approved by the Graduate School Dean
 - Other events as approved by the Graduate School Dean
- B. In the event of student illness or emergency situations, students who will be absent for less than seven days (including holidays and weekend days) need to submit written notification of such absence to the Graduate School Dean. For absences longer than seven days, students must submit a written diagnosis by a physician.

3) Must reside in residence

- Students must reside in the dormitory of Sungkyunkwan University
- Living off-campus is not allowed
- Sungkyunkwan University has residency regulations and all students must abide by them.

4) Examinations and Grade Evaluations

-Minimum Grade Point Average Requirement

- Students must maintain at a minimum a B (80-84) grade point average. Anything below 80 points will not be acknowledged as a passing grade.

- Regular Exams and Make-up Exams

- Regular Exams: Mid-term (7th to 8th week of semester), Final (last two weeks of semester)
- Make-up Exams: In the event a student cannot sit for an exam due to military service, illness, or any other emergency, the student must notify the faculty before the test date, and obtain the Graduate School Dean's approval to sit for the exam at another time.

- Qualifications to Sit for an Exam

- Any student who, without good reason, has failed to attend class for at least 13/16 of the total classes shall be prohibited from sitting for the exam. In the event of illness or emergency situations, students need to provide a written explanation of their absence.

-Scholastic Performance Evaluation Method

- Scholastic performance will be based on a 100-point scale for each course registered. Grades will be based on classroom performance (presentations, attendance) and test performance (mid-term and final exams).

- Evaluation Standard: Evaluation Ranking

Grades	Score (%)	Grade Point	Grades	Score (%)	Grade Point
A+	95 - 100	4.5	D+	65 - 69	1.5
A	90 - 94	4.0	D	60 - 64	1.0
B+	85 - 89	3.5	F	0 – 59	0.0
B	80 – 84	3.0	P		Pass
C+	75 – 79	2.5	I		Incomplete
C	70 - 74	2.0			

5) GLS System

An SKKU online membership ID provides access to Sunkyunkwan University Academic System for Students (GLS) and its services, and identifies authorized users of these services.

Using GLS, students are able to register for courses and change courses, apply for a leave of absence and reinstatement as well as change their address, and personal Information. In addition, retrieval services of academic records and curriculum like syllabus or course description is provided through the GLS system. Further information concerning the GLS system may be found at the orientation for newly arrived students.

2. PARTICIPANT'S RESPONSIBILITIES

Participants are required

- To take up the scholarship in the academic year for which it is offered (deferral is not allowed).
- To follow the training program to the best of their ability and abide by the rules of the training institute and KOICA.
- To reside in the accommodation designated by the training institute for the duration of the course except for holidays or temporary leave.
- To maintain an appropriate study load and achieve satisfactory academic progress for the course. If the participant fails to attain certain grades required by the university, his or her status as a KOICA program participant may be suspended.
- To participate in all activities associated with the approved course of study including all lectures and tutorials, submit all work required for the course and sit for examinations unless approved otherwise by the training institute in advance.
- To notify the training institute in advance and get an approval for temporary leave.
- To advise KOICA and the training institute of any personal or family circumstances such as health problems or family problems which may seriously affect their study.
- To refrain from engaging in political activities or any form of employment for profit or gain.
- To agree to KOICA collecting information concerning them and passing that information onto other relevant parties, if necessary.
- To return to their home country upon completion of their training program.
- Not to extend the length of their training program or stay for personal convenience; neither KOICA nor the university will provide any assistance and be responsible for the extension of their stay.

3. WITHDRAWALS

- In principle, a participant is not allowed to withdraw from the course at his or her own option once the course starts.
- A participant may withdraw with valid personal or home country's reasons (such as health or work issues) when acceptable to KOICA. In this case, he/she is not allowed to re-apply for KOICA's scholarship program for the next two years after the withdrawal.
- If a participant fails to attain certain grades required by the training institute, he or she may be forced to withdraw and return home upon withdrawal. In this case, he/she is not allowed to re-apply for KOICA's scholarship program.
- A participant who has withdrawn is not allowed to re-apply for KOICA's scholarship program for the next two years after the withdrawal.
- The participant who withdraws must return to the training institute the living allowance he or she has already received for the remaining period from the date of departure from Korea.

4. TEMPORARY LEAVE

- Participants can take a temporary leave **during the school vacation** (to the participants' home country or for a trip abroad) on the condition that the trip does not affect their schoolwork and as long as they notify the university in advance.
- KOICA and the university will not pay airfare for the trip **and his or her living allowance will be suspended from the day of departure to the day of return during temporary leave.**
- If the participant is found to have made an unreported temporary visit to his or her home country or traveled to other countries or **made a trip despite the university's disapproval**, he or she may be suspended from the KOICA scholarship.

5. ACCOMPANYING OR INVITING FAMILY

- As KOICA's Scholarship Program is a very intensive program, which requires full commitment and concentrated effort for study, **participants CAN NOT bring any family members.**
- KOICA does not provide any financial or other administrative support for the dependents of the participants.
- If a participant invites family members within the duration of one month, one must take a full responsibility related to their family members travel to and stay in Korea including administrative and financial support as well as legal matters in Korea. The participant is required to sign and submit the Written Pledge with supporting documents by acknowledging their responsibility and conditions of bringing their family members in Korea in advance. A copy of the Written Pledge is available at GMPA Office.

6. OTHERS

- KOICA will assume any responsibility only within the limit and scope of the insurance for participants.
- KOICA is not liable for any damage or loss of the participant's personal property.
- KOICA will not assume any responsibility for illness, injury, or death of the participants arising from extracurricular activities, willful misconduct, or undisclosed pre-existing medical conditions.
- If the participants break any of the rules of KOICA and the training institute during their stay in Korea, their status as a KOICA program participant may be suspended.

Part VIII**CONTACTS****1. CONTACT INFORMATION****1) Korea International Cooperation Agency (KOICA)**· **Program Manager: Ms. Jinmin LEE**

Training Program Department

· Address: 825 Daewangpangyo-ro, Sujeong-gu, Seongnam-Si, 461-833
Gyeonggi-do Republic of Korea

· Tel: +82-31-740-0586, Fax: +82-31-740-0595

· E-mail: jinmin.lee@koica.go.kr

· Homepage: <http://www.koica.go.kr>· **Program Coordinator: Mr. Sangjun HAN**

· Phone: +82-31-777-2644, Fax: +82-31-777-2631

· E-mail: korea139@global-inepa.org

2) Graduate School of Water Resources, Sungkyunkwan University· **Section Chief: Prof. Kyung Soo Jun**

· Dean, Graduate School of Water Resources, Sungkyunkwan University

· Address: 2066 Seobu-ro, Jangan-gu, Suwon-si, 16419 Gyeonggi-do, Republic of
Korea)

· Tel: +82-31-290-7515, Fax: +82-31-290-7549

· E-mail: ksjun@skku.edu

· Homepage: <http://web.skku.edu/~gswr/>· **Staff: Ms. Yujin Shin**

· Tel: +82-31-299-4785, Fax: +82-31-290-7549

· E-mail: sky171@skku.edu

· Homepage: <http://web.skku.edu/~gswr/>

Appendix 1.

Brand Name of the KOICA Fellowship Program

KOICA has launched a brand-new name for the KOICA Fellowship Program in order to more effectively raise awareness about the program among the public and its partner countries.

In English, CIAT stands for Capacity Improvement and Advancement for Tomorrow and in Korean it means “seed (씨앗)” with hopes to contributing in the capacity development of individual fellows as well as the organizations and countries to which they belong.



Appendix 2.

HOW TO JOIN THE KOICA COMMUNITY

1) The KOICA Alumni Community (<http://training.koica.go.kr>)

KOICA offers you a chance to meet other participants of our training programs online. We are all friends here. Share your memories, experiences and feelings. Please join now! The door to the KOICA Alumni Community is open to everyone.

The KOICA Alumni Community is an online extension of the relationship and friendship formed between former and present participants. By becoming a member of the KOICA Alumni Community, you can stay in touch with your former classmates and be informed of what is happening at KOICA and the center. The Community allows alumni to update their personal information and search for other alumni in an online directory.

2) The KOICA FACEBOOK (<http://facebook.com/koica.icc>)

The Fellows' Facebook is a place for fellows to ask questions and write comments on KOICA fellowship programs. So, if you have questions regarding our program, please feel free to join our Facebook community.



Appendix 3.

HOW TO GET TO THE ICC

Route: Incheon International Airport → Korea City Airport, Logis & Terminal

(CALT) → KOICA International Cooperation Center (ICC)

- **Arrival at Incheon International Airport (<http://www.airport.kr>)**

Flow:

- ▶ Fill out Arrival Card (or Immigration Card), Customs Declaration Form, Quarantine Questionnaire (on board)
- ▶ Quarantine including animals and plants (on 2nd Floor)
- ▶ Present your Arrival Card, Passport and other necessary document to Passport Control
- ▶ Claim baggage on 1st Floor
- ▶ Customs Clearance
- ▶ Pass an Arrival Gate
- ▶ Go to the KOICA Counter, which is located between Exit 1~2

• KOICA Counter at Incheon airport



Location : Next to Exit 1 on the 1st floor
(No.9- 10)

Tel. : 82-32-743-5904

Mobile : 82-(0)10-9925-5901

Contact: **Ms. Jin-Young YOON**

-After passing through Customs Declaration, please go to the KOICA Counter (located between exit 1~2) at Incheon Airport. At the KOICA Counter, you can get detailed information about how to get to International Cooperation Center (ICC) and purchase limousine bus ticket for City Airport, Logistics& Travel (CALT).

-All the KOICA staff at the Incheon Airport wears nametags or has signs for indication. If you cannot meet the KOICA staff at the counter, please purchase a limousine bus ticket from the bus ticket counter (located on the 1st Floor), and go to CALT Bus Stop No. 4A (or 10B). Please find the bus number 6103 and present your ticket to the bus driver. From Incheon Airport to CALT, the approximate time for travel will be between 70 to 90 minutes. When you arrive at CALT, you will find another KOICA staff who will help you to reach the ICC. KOICA will reimburse the limousine bus fare when you arrive at ICC. Also, please be aware that there may be illegal taxis at the airport. Even if they approach you first, please do not take illegal taxis and check to see if they are KOICA staff.

• **KOICA Counter at CALT airport**



Location : Lounge on the 1st floor of
CALT airport
Mobile : 82-(0)10-9925-5901

- If the limousine bus is not available due to your early or late arrival from 22:00 to 05:30.
 - Please contact the ICC reception desk
(Tel. 031-777-2600 / English announcement service is available 24 hours daily)
 - The staff at the ICC reception desk will let you know how to use a taxi. The taxi fare from the airport to ICC is normally 90,000 Won.
- ※ KOICA will not reimburse the taxi fare if you use a taxi during the hours of 05: 30 ~ 22:00.

• **From Incheon International Airport to the ICC through CALT**

- Take a City Air limousine bus at bus stop No.4A on the 1st Floor. Buses run every 10~15 minutes between the hours of 5:30 and 22:00.
- Meet the KOICA staff at the lounge on the 1st Floor of CALT upon arrival.
- Take a car arranged by the KOICA staff to the ICC (Expected time: 20 minutes)

"Please remember to read the Fellows' Guidebook.

It is available from the Korean Embassy or KOICA Overseas Office in your country and provides valuable information regarding KOICA programs, allowances, expenses, regulations, preparations for departure and etc."

- * The schedule in PI (Program Information) can be changeable according to the KOICA and Sungkyunkwan University Schedule.