

2017 KOICA-Ewha

Master's Degree Program in International Studies

(Capacity Development of Gender Equality Leadership)

August 1, 2017 – December 31, 2018

Seoul & Seongnam, Republic of Korea



Participants are strongly advised to thoroughly read and follow the provided instructions in the Program Information.

CONTENTS

PART I. KOICA & SCHOLARSHIP PROGRAM	03
PART II. PROGRAM OVERVIEW	08
PART III. HOW TO APPLY	10
1. APPLICATION ELIGIBILITY	10
2. ADMISSION PROCESS	11
3. REQUIRED DOCUMENTS	15
PART IV. PROGRAM CONTENTS	18
1. ACADEMIC SCHEDULE	18
2. ORIENTATION	19
3. CURRICULUM	20
4. EXTRACURRICULAR ACTIVITIES	28
PART V. TRAINING INSTITUTE	30
1. GENERAL INFORMATION	30
2. ACCOMMODATION	39
3. OTHER INFORMATION	40
PART VI. SUPPORT SERVICE	54
1. TRAVEL TO KOREA	54
2. EXPENSES FOR STUDY AND LIVING	54
3. INSURANCE	55
PART VII. REGULATIONS	59
1. ACADEMIC REGULATIONS	59
2. PARTICIPANT'S RESPONSIBILITIES	63
3. WITHDRAWALS	64
4. TEMPORARY LEAVE	64
5. ACCOMPANYING OR INVITING FAMILY	65
6. OTHERS	65
PART VIII. CONTACTS	66
APPENDIX 1. KOICA FELLOWSHIP PROGRAM (CIAT)	67
APPENDIX 2. KOICA FELLOWSHIP COMMUNITY	68
APPENDIX 3. HOW TO GET TO THE ICC	69

Part I	KOICA & SCHOLARSHIP PROGRAM
---------------	--

The Korea International Cooperation Agency (KOICA) was founded as a government agency on April 1, 1991, to maximize the effectiveness of Korea's grant aid programs for developing countries by implementing the government's grant aid and technical cooperation programs.

In the past, development cooperation efforts were focused on meeting the Basic Human Needs (BHNs) of developing countries and on fostering their Human Resources Development (HRD).

However, the focus has now shifted to promoting sustainable development, strengthening partnerships with developing partners, and enhancing the local ownership of beneficiaries.

Additionally, global concerns such as the environment, poverty reduction, gender mainstreaming, and population have gained significant importance among donor countries.

Due to the continuously changing trends in development assistance efforts and practices, KOICA is striving to adapt to these changes by using its limited financial resources effectively on areas where Korea has a comparative advantage.


In particular, since Korea has the unique experience of developing from one of the poorest countries in the world to one of the most economically advanced, this know-how is an invaluable asset that helps KOICA to efficiently support the sustainable socioeconomic development of its partner countries.

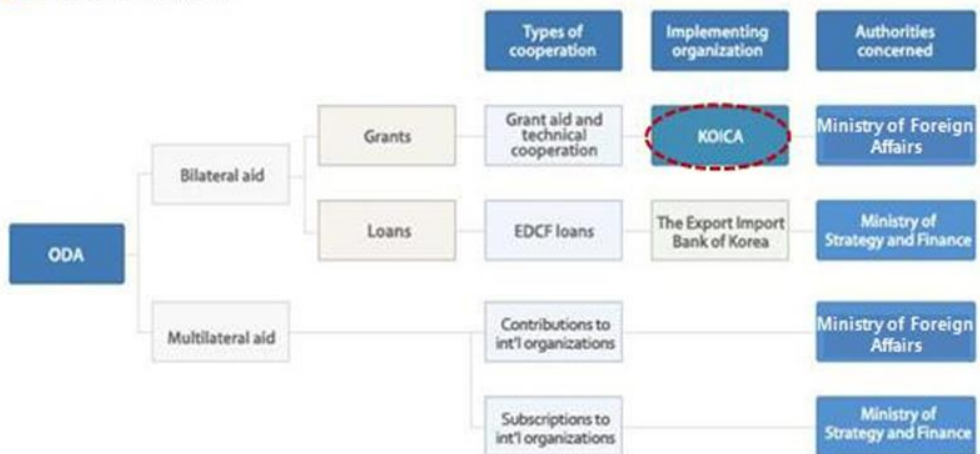
Korea's ODA & Framework

Official Development Assistance (ODA) is composed of grants or concessional loans, which are provided to developing countries with the purpose of promoting economic development and welfare.

Korea's ODA is classified into three areas: 1) bilateral aid (grant aid & technical cooperation), 2) bilateral loans, and 3) financial subscriptions and contributions to international organizations(multilateral).

Bilateral aid is comprised of technical cooperation and various types of transfer (made in cash, goods or services) with no obligation for repayment, and is implemented by KOICA under the authority of the Ministry of Foreign Affairs in the Republic of Korea. Bilateral loans are provided on concessional terms under the name of the Economic Development Cooperation Fund (EDCF), implemented by the Export-Import Bank of Korea under the Ministry of Strategy and Finance. Multilateral assistance is delivered either as financial subscriptions or as contributions to international organizations.

 Korea's ODA system



Korea's Experience and KOICA's Program for Human Resources Development

Human Resources Development (HRD) has been the most important factor in Korea's escape from vicious cycle of poverty and underdevelopment that had existed for many decades. With scarce natural resources, HRD played a vital role in modern Korea's development. Clearly, Korea has emerged as an exemplary showcase of national development powered by HRD.

From its own development experience, Korea came to fully recognize the significance of HRD, specifically about Korea's collaboration with other developing countries. With much experience and know-how in HRD, Korea contributes greatly to the international community by sharing its unique development experience with other nations.

Since its establishment in 1991, KOICA supported a variety of international cooperation programs for HRD, mainly in project-type aid form, focusing on education and vocational training with a concentration in building a foundation for HRD.

The training and expertise-sharing programs help our partner countries build administrative and technical expertise in both the public and private sectors. In order to share experience at the grassroots level, under the name of World Friends Korea, KOICA dispatches Korea Overseas Volunteers to provide services in the fields such as education, regional development, computer science, health care and nursing. Approximately 7,806 volunteers have been dispatched to 57 countries thus far.

The training program provides opportunities to individuals from developing countries to gain first-hand knowledge of Korea's development experience. The purpose of the program is to enable the participants to apply what they learned for the development of their home country or local community. Since 1991, KOICA has offered 3,695 courses to 53,984 participants from 174 countries. There are a wide range of topics covered in the training program, including administration, economic development, science and technology, information and communication technology, agriculture and

health. In order to meet the changing needs of partner countries, KOICA always strives to renovate and improve its HRD programs.

Types of KOICA Training Programs

KOICA offers five major types of training programs:

1. Country Training Program

Tailored programs that are specifically designed for an individual partner country

2. Regular Training Program

Programs that are open to any interested partner countries

3. Special Training Program

Programs that are temporarily available owing to particular commitments of the Korean as well as partner governments

4. Joint Training Program

Programs conducted in partnership with international organizations and other agencies

5. Scholarship Program

Master's degree programs offered to individuals from partner countries

KOICA's Scholarship Program

With a mission to nurture talented students from developing countries, KOICA invites high-caliber students from developing countries and helps them gain professional and systematic knowledge that will play a key role in their home country's development.

To accomplish this mission, KOICA has been operating master's degree courses with leading Korean universities in the fields of economics, trade, women's empowerment, rural development, etc.

In particular, this program has significantly strengthened the relationships between Korea and the students' home countries. Students, who have been given an opportunity to see Korea's experience in poverty reduction and socio-economic development, will gain a deeper understanding of Korea and contribute to the future social, political and economic ties between the two nations.

From 1997 to 2014, the program has assisted a total of 2,210 students. In addition, as of 2015, 388 participants will participate in 19 master's degree programs at 16 Korean universities.

KOICA Scholarship Program is fully committed to the Millennium Development Goals (MDGs) and is determined to expand its efforts to nurture future talents from developing countries to promote their countries' sustainable economic growth and social development.

Part II	PROGRAM OVERVIEW
----------------	-------------------------

- **Program Title:** 2017 KOICA-Ewha Master's Degree Program in International Studies (Capacity Development of Gender Equality Leadership)

■ **Duration**

- Stay duration: August 1, 2017 ~ December 31, 2018 (17 months study in Korea including 4 weeks of pre-requisite courses)

During 17 months of Ewha-KOICA Master's Program, students should fulfill course requirements and complete their master's theses.

- Academic duration: September 1, 2017 ~ February 2019 (15 months)
In accordance to the university regulations, the diploma will be issued in February 2019.

■ **Degree**

- Master's Degree in International Studies (Gender Equality Capacity Development)

■ **Objectives**

- 1) To provide high quality education for women professionals with theoretical and practical skills and knowledge of development to enhance gender equality and empowerment of women in developing countries
- 2) To develop leadership capacity of women officials in public sector so that they can play key roles in the development process of their countries
- 3) To share Korea's development experience which can be applied not only to achieve the economic development but also to improve the condition and position of women in participants' countries
- 4) To build cooperative relationships between Korea and partner countries through the global network of women leaders
- 5) To improve practical leadership skills and capacity of women officials who are engaged in public service sector

■ **Training Institute: Graduate School of International Studies,
Ewha Womans University**

- <http://gsis.ewha.ac.kr>
- Ewha-KOICA Program Website: <http://ewhakoica.ewha.ac.kr>

■ **Number of Participants: 20 Government Officials**

■ **Language: The Program is conducted in English.**

■ **Accommodations: University dormitory room and facility are provided.**

Part III

HOW TO APPLY

1. APPLICATION ELIGIBILITY

Applicant must:

- Be a female (Ewha Woman University is not a co-ed university).
- Have a bachelor's degree or higher
- Be preferably under 40 years of age in good health, both physically and mentally, to complete the program.
 - Having Tuberculosis or any kind of contagious disease is regarded as a disqualifying condition for participating in this program.
- Be a citizen of the country that has a cooperative relationship with KOICA.
- Be a government/municipality official or a researcher/instructor at state institutes working in her home country (Private sector employees are not eligible).
- Be nominated by her government.
- Have sufficient command of English (Speaking, Writing, and Listening) to be able to take courses conducted entirely in English.
- Have not participated in KOICA's scholarship program or any of the Korean government- funded scholarship programs in the past.
 - Person who had withdrawn arbitrarily from KOICA's scholarship program cannot re-apply.
 - Person belonging to an institution in which candidates submitted false documents is disqualified.

2. ADMISSION PROCESS

Procedure	Dates
Step 1. Closing Date for Application Package Submission	April 12, 2017
Step 2. On-site Interview (KOICA)	April 1 – 8, 2017
Step 3. Document Screening	April 20 – 26, 2017
Step 4. Phone Interview & Written Essay Exam	May 15 - 24, 2017
Step 5. Medical Check-up (local)	May 29 - June 30, 2017
Step 6. Final Admissions Notification	July 3, 2017

* The timeline in this table is based on the local time in South Korea and is subject to change.

Post Admission

Arrival in Korea	August 1, 2017
KOICA Orientation	August 2 - 3, 2017
Ewha Orientation	August 4, 2017

1) Application package submission

- Prepare all required documents for your admission package and fill out the 'Document Checklist'. Check whether all information is correct.
- Submit the application package (including both Ewha and KOICA application forms and other required documents) to the regional KOICA office or Korean Embassy (if KOICA office is unavailable) by the submission date (April 19).

- Original copies should be sent to Ewha GSIS before the phone interviews. (If they are unavailable, the originating institution must authorize copies before they are submitted.)

2) On-site Interview and English Written Exam (KOICA)

- Applicants will participate in on-site interviews by KOICA regional office or Korean Embassy. If an applicant lives in a country where the KOICA regional office / Embassy does not exist or lives far from the capital city, she can be interviewed by phone after consulting with the KOICA regional office / Embassy.

3) 1st Round: Document Screening (University)

- Upon successful submission of all required application packages and the results of on-site interview, applicants will be considered for document screening.
- Application packages and the on-site interview results will be thoroughly reviewed by the Admission Committee of Graduate School of International Studies at Ewha Womans University.
- Every component included in the application package such as GPA, English proficiency, essays, current affiliation, working experiences, etc. will be evaluated.
- The list of applicants who are qualified for the 2nd round screening (phone interview) will be announced (*Note: It is the university regulation that the document screening results should not be disclosed).

4) 2nd Round: Phone Interview and English Written Exam (University)

- Applicant who passes the document screening is allowed to have a phone interview.
- The list of interviewees will be sent to KOICA regional office/Korean Embassy and the interview schedule will be arranged and notified to applicants.
- After the interviews, applicants should take English written exams conducted at the KOICA regional office or Korean Embassy.
- After the 2nd round selection process, the final list of admitted students in the Ewha-KOICA Master's Program will be announced.

5) Medical Check-up (Local)

- (Summary) The medical check-up results will identify the applicants' health conditions, and doctors belong to the coordinating agency will verify factors that hamper the completion of the scholarship program.
- (Coordinating Agency Contact Info)
 - Inje University PAIK Hospital
 - Person in charge: Ms. Leah OH
 - E-mail: inje_paik@daum.net
 - Tel: +82-2-2273-0980
- (Date of examination)
 - The date of the medical check-up will be notified individually from the coordinating agency after passing the interview successfully.
 - The hospital reservation and related information will be notified to the applicants individually by e-mail from the coordinating agency. However, applicants who do not receive any notice until June 5th 2017, they should contact via e-mail or telephone above with the coordinating agency.
- ※ Since the coordinating agency will provide guidance on medical check-up for those who passed the 2nd round interview by e-mail, you need to fill out the correct e-mail address on the application form and check your e-mail in time.
- (Recipient) Applicants who successfully pass the 2nd round interview (limited to about 130% of capacity)
 - Applicants who successfully pass the 2nd round interview must receive an additional medical check-up. If you fail to take the examination within the given time, you will be disqualified.
 - Even though you are on the waiting list, you must receive the medical check-up.
- (Medical institution) The medical check-up will be carried out in the medical institution "designated by KOICA" located in the applicant's capital city.
 - ※ Examinations received individually are invalid and non-refundable.

- (Expenses) The coordinating agency designated by KOICA will cover all costs to the local medical institution directly, so the applicants should not make separate payments to the medical institution.
 - Please remember that transportation and accommodation fees will NOT be reimbursed.
 - KOICA will not pay for the treatment necessary after the examination.
- (Result notice) The local medical institution does not inform the participant of the results of the examination, but if the participants request to the local medical check-up service agency, they will send it to them directly.
 - You may be asked to receive re-examination by the coordinating agency to certain your medical condition.
 - ※ In case of re-examination, it must be done during the re-examination period.
(the coordinating agency will inform individually for those who need re-examination.)
 - The results will be provided to KOICA Headquarters, KOICA overseas office as well as embassies, training institution, training support organization, and coordinating agency to progress application process.

Please read carefully before you apply

Changes in other natural and living environments may affect your health as leaving your home country. Among the trainees who have ever entered the country; their physical condition has fallen sharply, resulting in cases where they are hospitalized or had to return home earlier without being able to complete the program. In order to prevent such situation, we apply and judge the standard that does not interfere with the long-term study through the health screening when selecting trainees; we comprehensively judge the applicant's health eligibility based on the result of the medical examination.

Therefore, if you suffered from an illness in the past, or still have it (previous illness); you must state it in the Medical Questionnaire because there are some diseases that are exacerbated by the environment even if it is currently cured. If you do not report the exact details, you may not be able to claim your insurance or receive medical assistance. Besides, you might be sent back to your home country or end up returning your living expenses, travel expenses, etc. to us.

Korea may have higher medical costs than your home country. According to Korea's

insurance system, 20% of medical expenses are mandatory deductibles by law; which often is covered by the participants themselves. Therefore, we would like to recommend for those who are under medical treatment due to illness, those who need regular medical examinations, and those who are receiving outpatient treatment for tooth problems such as cavities to consult with their doctors and apply to the Master's Degree Program after they are completely cured.

6) Admissions Notification

- Admissions results will be notified to the regional KOICA offices or Korean embassy. Registration instructions, course registration and other necessary steps will be provided to individuals.

3. REQUIRED DOCUMENTS

- Submit all of the following application materials and documents directly to the KOICA regional office or the Korean Embassy (if KOICA office is not available).
 - 1) Ewha GSIS Form 1: Document Check List
 - 2) Completed Application Form of KOICA
 - 3) Completed Application Form 2: Application Form of Ewha GSIS (Type in English and Print out, Hand writing is not acceptable)
(The form is available from the Ewha-KOICA website:
<http://ewhakoica.ewha.ac.kr/>)
 - 4) Ewha GSIS Form 3: Statement of Purpose (250-500 words in English, typed and print out, hand written is not acceptable) Also, the Statement of Purpose file (in MS Word) must be emailed directly to ewhakoica@ewha.ac.kr).
 - 5) Essay on Gender Equality and Women Leadership (within 1,000 words, typed; Also the essay file (in MS Word) must be emailed directly to ewhakoica@ewha.ac.kr);
 - 6) Ewha GSIS Form 4: One letter of recommendation from a person who has known the applicant enough to write a letter of recommendation with authority (e.g., professor)
 - 7) One letter of recommendation from the present working organization.

- 8) Photocopied bachelor's degree (or if applicable, college diploma(s) or Master's degree) or proof of prospective graduation (applicants must carry the original diplomas to Korea if finally selected)
- 9) Official undergraduate academic transcript (It should include accumulated GPA or total score)
 - Those who attended more than one college must submit official transcripts from all colleges or university-level educational institutions they attended.
 - If the transcript does not indicate GPA, the total score should be converted to percentage (out of 100%) and be stated officially.
- 10) English-proficiency test result from one of the following: TOEFL, TOEIC or IELTS (if applicable)
 - The most recent scores are preferred, and must be less than two years from the application deadline.
 - Exemption: International students whose native language is English or who have received a B.A. or M.A. from an accredited English-speaking institution.
- 11) Certificate of Employment (if applicable)
- 12) A copy of passport (If the passport is not yet issued, please send a copy of applicant's national ID card. As soon as the passport is issued, please send the copy of passport immediately.).
- 13) Two passport-sized photos (One should be attached on the Ewha GSIS application form.)
- 14) All documents (Diplomas, Transcripts, Statement of Purpose, Recommendation Letters, etc.) must be original and be written in English.
 - The deadlines are based on Korea Standard time.
 - The final acceptance for the program will be confirmed after the medical check-up.
 - Doctor's opinion paper about health check-up review

If applicants need any further information or inquiry, please contact to Ewha-KOICA office by e-mail (ewhakoica@ewha.ac.kr) or phone call (+82-2-3277-3659).

★★ Form 1 ~ 4: Attached herewith

***Important Notes for All Applicants:**

1. All forms and supporting documents should be **typed in English**. Documents in any other language should be accompanied by a notarized English translation.
2. Original documents should be submitted. (If it is unavailable, the originating institution must authorize copies before they are submitted.)
3. If any of the submitted materials contain false information, admission will be rescinded.
4. Applicants whose forms and supporting documents are incomplete or unsatisfactory will be disqualified from the admission process.
5. Applicants should take full responsibility for any disadvantage due to the mistakes or omissions in the application.

Part IV	PROGRAM CONTENTS
----------------	-------------------------

1. ACADEMIC SCHEDULE

Session	Date (YYYY.MM.DD)	Contents / Remarks
Preparatory Session	2017.8.1 – 2017.8.3	Arrival, KOICA Orientation
	2017.8.4	Orientation
Pre - Course	2017.8.7 – 2017.8.31	4 weeks
Fall Semester (1st semester)	2017.9.1 – 2017.12.15	15 weeks
Winter Semester (2nd semester)	2018.1.2 – 2018.2.28	9 weeks
Spring Semester (3rd semester)	2018.3.2. – 2018.6.15	15 weeks
Thesis Seminars	2018.3 – 2018.11	40 weeks
Thesis Semester (4th semester)	2018.9.3 – 2018.12.7	15 weeks
Wrap-up Session	2018.12	Final Thesis Presentation
	2018.12	Graduation Ceremony
	2018.12.31	Departure

*The above schedule is subject to change.

**A detailed Program Schedule will be provided upon arrival.

- Pre-requisite courses will take place from Aug. 7 to Aug. 31, 2017. The Pre-requisite courses include 1) IS101 Economic Analysis, 2) IS102 Political Analysis, and 3) IS103 Statistical Analysis, which are the basic analysis methods needed for the master's degree coursework, and 4) Lectures on Korean Society and Culture that help students to learn about Korea. A detailed Program Schedule will be provided upon arrival.

- Korean Language Class: Students will take Korean language class as a pre-requisite course in August and they are also required to take the Korean language classes every semester throughout the program. A certificate will be conferred to students who complete the courses successfully and reach the required level.
- All pre-requisite courses are Pass/Non pass (P/NP) grading.

2. ORIENTATION

When you arrive, first there will be an orientation for 2-3 days for KOICA's Scholarship Program at the KOICA International Cooperation Center (ICC). The orientation aims to provide the participants with useful information on the program as well as general information on living in Korea that you will need during the program. Usually, the orientation is composed of two parts: KOICA's welcoming session, and extra-curricular activities. The order of each part is subject to change.

Session	Date	Contents
Arrival	August 1, 2017	Arrival in Korea
KOICA Orientation	August 2~3, 2017	KOICA's welcoming session
Extra-curricular Activities		Seoul City Tour

- * Before the dormitory check-in, you will stay at KOICA International Cooperation Center (ICC).

1) KOICA's welcoming session

- In the first part of the orientation, you will have a welcoming session, which includes KOICA's welcoming reception, an introduction of KOICA and a course outline. Through this session, you can have an overview of the Scholarship Program. Lectures about Korean culture, as well as general information regarding daily life in Korea, will be also delivered in this session.

2) Extra-curricular Activities (Seoul City Tour)

- KOICA provides a Seoul City Tour to every participant of the training program. Seoul is the capital of Korea. You will have a chance to visit the cultural heritage and downtown area of Seoul. The extra-curricular activities will help you get accustomed to the new culture and surroundings in Korea.

3. CURRICULUM

1) Master's Degree in International Studies

For students in Ewha-KOICA Scholarship Program (Capacity Development of Gender Equality Leadership), the concentration courses of the Development Cooperation major are offered with gender equality focus. In addition, students can take other courses as electives from four major functional areas, such as Development Cooperation, International Trade & Investment, International Business, and International Relations. Ewha-KOICA program offers diverse curriculum including lectures, seminars, and workshops on gender, development, leadership skills. Below is the curriculum for Ewha-KOICA program.

A. Curriculum & Credits

Classification	Courses	Credits	Sum
1.Prerequisite Courses	IS101 Economic Analysis	P/NP	-
	IS102 Political Analysis		
	IS103 Statistical Analysis		
	- Lecture on Korean Society and Culture		
	- Korean Language Class		
2.Required Courses	IS203 Research Methods and Fieldwork	3	3
3.Required Courses	IS549 Economic Development of Korea	3	6
	IS622 Gender and Development	3	
	- Korean Language Class	P/NP	
4.Professional Training Courses	IS301 Distinguished Global Lecture Series (Two semesters: 1 credit/ semester)	2	5
	IS181 Practicum on Gender and Development	1	

	IS311 Writing and Presentation Workshop	1	
	IS312 Global Career Management Workshop	1	
5. Concentration Requirements	IS182 Practicum on Gender Equality and Women's Empowerment	3	6
	IS410 Development Cooperation: Theory and Practice	3	
6. Concentration Electives	IS407 Global Political Economy	3	Minimum 9 (Including 1.5 credit courses)
	IS503 Korean Economy	3	
	IS516 Management Evaluation in Development Cooperation	3	
	IS529 Special Topics in Development	3	
	IS533 Public-Private Partnership	3	
	IS534 CSR and Development Cooperation	3	
	IS544 Trade and Development	3	
	IS613 Comparative Societies & Culture	3	
	IS614 NGOs and International Cooperation	3	
	IS621 Gender Mainstreaming in Development	3	
	IS623 Women and Human Rights	3	
	IS624 Global Women Leadership & HRD	3	
	IS625 Women in East Asia	3	
	IS645 Sustainable Development	3	
	IS646 Finance and Development	3	
	IS648 Poverty and Development	3	
	IS664 East Asian Politics and Societies	3	
	IS670 Political Economy of Development	3	
	IS671 Human Security and Development	3	
	IS673 International Humanitarian Assistance	3	
	IS674 East Asian Development	3	
	IS732 Korean History and Culture	3	
	IS923 Advanced Topics in Development Cooperation	3	
	IS135 Practicum on Social Entrepreneurship and Development	1.5	
	IS151 Practicum on Development Cooperation in Africa	1.5	

PART IV. PROGRAM CONTENTS

	IS152 Practicum on Development Cooperation in Asia	1.5	
	IS153 Practicum on Humanitarian Relief	1.5	
7.Electives (Optional)	IS201 International Negotiations and Strategy	3	Optional
	IS401 International Economics: Theory and Practice	3	
	IS403 International Trade Policy	3	
	IS404 International Business: Theory and Practice	3	
	IS408 International Relations: Theory and Practice	3	
	IS501 International Trade Law	3	
	IS502 International Finance	3	
	IS508 Global Strategic Management	3	
	IS512 Global financial Management	3	
	IS518 International Security	3	
	IS519 Principles of International Law	3	
	IS522 International Business Law	3	
	IS524 Financial Analysis and Planning	3	
	IS525 Special Topics in International Trade	3	
	IS526 Special Topics in International Finance	3	
	IS527 Special Topics in International Business (A)	3	
	IS528 Special Topics in International Business (B)	3	
	IS531 Special Topics in International Relations	3	
	IS536 Global Governance and Human Security	3	
	IS538 East Asian Thought and Culture	3	
	IS540 Multiethnic Societies and Conflict Management	3	
	IS541 East Asian Economies	3	
	IS542 Foreign Direct Investment	3	
	IS546 Case Studies in Trade Dispute	3	
	IS547 FTA and the Global Trading System	3	
	IS615 Global Marketing Management	3	
	IS619 Global Human Resource Management	3	
	IS641 Corporate Governance and Social Responsibility	3	
	IS647 International Human Rights	3	

		IS649 International Relations of East Asia	3	
		IS650 Public Diplomacy	3	
		IS652 Special Topics in International Legal Studies	3	
		IS664 East Asian Politics and Societies	3	
		IS672 Peace-Building and Development in Conflict Areas	3	
		IS682 Regional Integration in Europe and Asia: Comparative Perspectives	3	
		IS744 International Organizations	3	
		IS921 Advanced Topics in International Economy	3	
		IS131 Practicum in Social Venturing	1.5	
		IS132 Practicum on Brand and Reputation Management	1.5	
		IS133 Practicum on CSR	1.5	
		IS171 Practicum in IPR	1.5	
		IS172 Practicum in Public Diplomacy	1.5	
		IS173 Practicum on Conflict Transformation	1.5	
		IS174 Practicum on Good Governance	1.5	
8. 21st Century Program (Select field/Optional)	Negotiations and Conflict Management	IS153 Practicum on Humanitarian Relief	1.5	Optional (Minimum 9 for selected field)
		IS173 Practicum on Conflict Transformation	1.5	
		IS174 Practicum Good Governance	1.5	
		IS201 International Negotiations and Strategy: Theory and Practice	3	
		IS536 Global Governance and Human Security	3	
		IS540 Multiethnic Societies and Conflict Management	3	
		IS618 Cross-Cultural Communications	3	
		IS672 Peace-Building and Development in Conflict Areas	3	
	International Public Relations	IS132 Practicum on Brand and Reputation Management	1.5	
		IS134 Practicum on e-Marketing	1.5	
		IS171 Practicum in IPR	1.5	
		IS172 Practicum in Public Diplomacy	1.5	
		IS611 Principles of International Public Relations	3	
		IS615 Global Marketing Management	3	
		IS618 Cross-Cultural Communications	3	

PART IV. PROGRAM CONTENTS

		IS650 Public Diplomacy	3	
		IS662 International Journalism and Mass Communication	3	
	International Legal Studies	IS501 International Trade Law	3	
		IS519 Principles of International Law	3	
		IS522 International Business Law	3	
		IS647 International Human Rights	3	
		IS652 Special Topics in International Legal Studies	3	
	Global Women Leadership	IS621 Women and International Cooperation	3	
		IS622 Gender and Development	3	
		IS623 Women and Human Rights	3	
		IS624 Global Women Leadership and HRD	3	
		IS625 Women in East Asia	3	
	Public-Private Partnership and Corporate Social Responsibility	IS131 Practicum in Social Venturing	1.5	
		IS133 Practicum on CSR	1.5	
		IS135 Social Entrepreneurship and Development	1.5	
		IS508 Global Strategic Management	3	
		IS533 Public Private Partnership	3	
		IS534 CSR and Development Cooperation	3	
		IS641 Corporate Governance and Social Responsibility	3	
	East Asian Studies	IS646 Finance and Development	3	
		IS503 Korean Economy	3	
		IS538 East Asian Thought and Culture	3	
		IS541 East Asian Economies	3	
		IS548 Special Topics on China	3	
		IS625 Women in East Asia	3	
		IS649 International Relations of East Asia	3	
		IS664 East Asian Politics and Societies	3	
		IS674 East Asian Development	3	
		IS721 Political Economy of East Asia	3	
		IS731 Korean Politics	3	
		IS732 Korean History and Culture	3	
	Regional	KS506 Comparative Studies of the East Asia Cultures	3	
		IS543 Regional Integration and Cooperation	3	

	Cooperation	IS649 International Relations of East Asia	3	
		IS681 Special Topics in the EU	3	
		IS682 Regional Integration in Europe and Asia: Comparative Perspectives	3	
		IS721 Political Economy of East Asia	3	
9. Thesis		Z0001 Thesis Research	3 (P/NP)	3
Total Credits Required for Graduation				41

* The above curriculum is subject to change.

* The specified number of credits from the elective section is the minimum number of credits the students must take.

B. Credits completed per semester

C. Required Grade Point Average (GPA)

Semester (max. credits)	Course Classification	Courses
Prerequisite Course(-)	Orientation	Ewha-KOICA Program Orientation (academic affairs, dormitory regulations, safety education etc.)
	Prerequisite Course	Economic Analysis
		Political Analysis
		Statistical Analysis
		Korean(1)
Fall Semester (1st semester) (14)	Concentration Requirements (Functional Concentration) (3)	Development Cooperation: Theory and Practice
	Required Courses for KOICA (3)	Gender and Development
	Professional Training Courses (1)	DGLS
	Professional Training Courses (1)	Global Career Management Workshop
	Electives (Optional) (6)	2 Elective courses
	Required	Korean(2)
Winter Semester (2nd semester) (7)	Required Courses (3)	Research Methods and Fieldwork
	Required Courses for KOICA (3)	Economic Development of Korea
	Professional Training Courses (1)	Practicum on Gender and Development
	Required	Korean(3)
Spring Semester (3rd semester)	Professional Training Courses (1)	DGLS
	Professional Training Courses (1)	Academic Writing and Presentation Workshop
	Electives (Optional) (12)	3 Elective courses

PART IV. PROGRAM CONTENTS

(14)	Required	Korean(4)
Thesis Semester (4th semester) (6)	Thesis (3)	Thesis Research
	Concentration Requirements (3)	Practicum on Gender Equality and Women's Empowerment
	Required	Korean(5)

- Students with a GPA below 2.50 for two consecutive semesters will be automatically expelled from the program.
- Students with an accumulated GPA below 3.0 for the three semesters before the thesis semester (Fall, Winter, Spring) will be disqualified from acquiring a diploma or a graduation certificate.
- Requirements for writing thesis in the fourth semester are:
 - Acquire a minimum of 35 credits within three semesters.
 - Acquire a minimum GPA 3.0 or above
 - Take at least three courses from functional major requirements.
 - Acquire B0 or above in each functional major requirement courses.

2) KOICA-Ewha Scholarship Program Regulations

A. Ewha GSIS Regulations

- Ewha-KOICA students must abide by the 'Honor Code' adopted by Ewha GSIS and submit the completed form upon agreement.
- If a student violates the university regulations, she is subject to disciplinary measures by the Ewha GSIS Disciplinary Committee. Multiple violations will result in expulsion from the program.

B. Ewha Womans University Dormitory regulations

(Graduate Students Dormitory)

- All Ewha-KOICA Scholarship Program students must reside in the Graduate Students Dormitory.
- The dormitory rooms for graduate students are double occupancy.

- Living off-campus is prohibited during the period of scholarship program. Living with one's family in the dormitory also prohibited. (A trainee/student must not bring her family to Korea during the scholarship program).
- Ewha has very strict dormitory regulations and all students must abide by them.
- A student who violates dormitory regulations will be evicted from the dormitory and the program. The scholarship will be also terminated.
- Smoking and drinking alcohol are strictly prohibited in the university dormitory.
- Due to safety reasons, cooking within the premises of the dormitory is only permitted in the shared 'Kitchenette.'

4. EXTRACURRICULAR ACTIVITIES (TENTATIVE)

1) Field visit*

A. Practicum in Korean Society and Development

- **Culture:** Gyeongju (Bulguksa, Sukgutam, Cheom seongdae, Anapji etc.), Ganghwa County (Chojijin, Bomunsa, Mt. Mani), Korean Folk Village, Bukchon Hanok Village, JeonJu Hanok Village, Hwaseong Fortress, National Museum of Korea, Seoul Museum of Art, Seoul Fortress.
- **Gender Issues:** Korean Women's Development Institute, Ministry of Gender Equality for family, Ewha Welfare Center, District Social Welfare Center, House of Sharing for Japanese Military sex-slave victims.
- **Economic Development** Samsung Electronics, POSCO, Hyundai Motor, Hyundai Shipbuilding, Hyundai Heavy Industries, SK Energy, Hankook Chinaware, Lotte SamKang, and Gumi GongDan, LG Electronics, etc. Museum of Saemaeul Undong.
- **History:** DMZ, Independence Memorial Hall of Korea, UN Memorial Cemetery in Korea, The War Memorial of Korea.

* Places are subject to change.



2) Other Extracurricular Activities

- Welcoming Ceremony and Ewha-KOICA Orientation
- GSIS Open House
- International Cultural Festival

- Country Booth Exhibition
- Talent Night
- International Food Festival
- Team-building Activities
- Workshops, Forums and Conferences
- Korean Speech Contest
- Thesis Presentation
- Convocation Ceremony



Part V

TRAINING INSTITUTE

1. GENERAL INFORMATION

1) Ewha Woman University

- Ewha, founded in 1886, is the first female educational institution in Korea. Since its foundation, Ewha has been at the forefront of advancing gender equality and empowerment of women in Korea. Ewha is the largest women's university in Korea with enrollment of 25,000 students in 12 colleges and 15 graduate schools. The university continues to empower women through education and the impact is visible by simply looking at the various academic and professional programs offered at the undergraduate, graduate, and postgraduate levels, and diverse campus events.
- Women leadership has been a key to Ewha's past and current success as a women's institution of higher education. With the changing status of women, the university has launched a series of innovative programs and pursued broad objectives to train a new generation of women professionals at the local, national, and global level. Ewha now is sharing its success with the world by playing a key role in educating female students from all over the world and help them become future global leaders.

2) The Graduate School of International Studies (GSIS)

- The Graduate School of International Studies (GSIS) at Ewha Womans University was established in March 1997 to spearhead the effort to provide the intellectual breadth and professional development necessary to successfully launch women into the international arena.
- Ewha GSIS produces top quality leaders based on the program's commitment to excellence at every level. Ewha GSIS is well designed to meet the diverse needs of the students. Graduate seminars offer in-depth academic exposure as well as extensive student engagement through low student-to-faculty ratio. Ewha GSIS courses rigorously train students' analytical capacities as well as develop practical

skills to prepare students for an increasingly globalized and competitive work environment. In addition to the courses, a variety of special lectures, workshops, and conferences addressing diverse international issues are held. Ewha GSIS has a winning program and a proven track record of producing global women leaders. The Korea Ministry of Education ranked Ewha GSIS number one out of all GSIS programs in Korea.

- Ewha GSIS professors have received research and institutional grants from the Bill & Melinda Gates Foundation, the Bosch Foundation, Friedrich Ebert Stiftung (FES), KIEP, Korea Foundation, National Research Foundation, and many others to make Ewha GSIS one of the best-funded programs of its kind in Korea enabling the students to continue their education with scholarships and research opportunities.

3) Global Ewha GSIS

- Ewha GSIS has succeeded in building an exceptional program with one of the most diverse student and faculty bodies in the world. Students from over 70 countries have gathered at Ewha GSIS to become experts in international trade and investment, international business, development cooperation, and international relations.
- Ewha GSIS is the only school in Korea with a dual M.I.S. degree program in conjunction with the Elliot School in George Washington University. After completing three semesters at Ewha GSIS and two semesters at the Elliot School, students receive two Master's Degrees in International Studies.

4) Ewha GSIS Affiliated Research Institutions

-Institute for Development and Human Security (IDHS)

IDHS dedicates in advancing development cooperation and human security around the work. IDHS also educates and trains specialists and professionals to work in the field of development cooperation disseminates research findings and engage in events which help raises public awareness on development cooperation and human security.

-Institute for International Trade and Cooperation (IITC)

IITC specializes in international trade, international cooperation and regional research by systematic integration of social science, law, management, and more that involves professors from each discipline. IITC publishes *Asian International Studies Review* journal biannually.

-Global Career Management Center (GCMC)

GCMC provides career development, career education, and practical experiences to GSIS students to help them find job opportunities.

-The Center for Global Social Responsibility (CGSR)

CGSR was founded to raise awareness of social responsibility among social-economic agents and to carry out research on corporate social responsibility (CSR), socially responsible investing (SRI), social economy, development cooperation, and public-private partnerships (PPP). It also serves to bridge the gap between academics and practitioners through its partnerships with academic and non-academic institutions.

-The Public Diplomacy Center (PDC)

PDC seeks to promote mutual interests between the host country and home country through genuine dialogue in an era of globalization where citizens are becoming more and more influential. The center's main activities include research, education, and training on public diplomacy issues including policy formation, policy assessments, academic and educational exchange programs, civic engagements, cultural cooperation and so on.

- Through the high standard of education and training excellence at Ewha GSIS, students develop acute analytical skills, become perceptive negotiators, learn effective written as well as oral communication skills, develop the ability to work effectively in teams as well as an individual, and become effective decision-makers for the global arena. Learning at Ewha GSIS is a truly enriching and worthwhile experience. Because of our unique educational platform, which is distinguishable from other related programs; our students are strategically positioned to become leading women professionals in their chosen international fields.

5) Functional concentration

▪ DEVELOPMENT COOPERATION

- Development Cooperation concentration prepares students for future work in various multilateral and bilateral international organizations with a special emphasis on international development. Through an interdisciplinary array of courses in economic development, democracy, and international development cooperation in developing countries, students in this major acquire a broader understanding of the processes of economic, political, and social change and development in the developing world.

▪ INTERNATIONAL TRADE & INVESTMENT

- International Trade & Investment concentration is designed to meet the growing need for international trade specialists in Korea and abroad. This program studies the theory, formulation, and history of international trade and negotiation. In addition, students are expected to develop a broad understanding of how economic, business, and political factors interact in shaping the international trade environment.

▪ INTERNATIONAL BUSINESS

- International Business concentration is designed for students who wish to pursue internationally oriented careers in various kinds of private and public sectors dealing primarily with international business and management. This program offers special expertise in international business, finance, and management.

▪ INTERNATIONAL RELATIONS

- International Relations concentration aims to train students to cope with the ever-changing dynamics of international affairs. This concentration is designed for students interested in defense policy, diplomatic relations, and international conflict. Students in this program are trained to have expertise in analyzing various kinds of functional and security issues in the international arena.

6) Faculty

- **KIM, Eun Mee** (Dean, Professor, Ph.D. Brown University)
 - Research: Political Economy, International Development, Industrial Organization, Globalization, Multiculturalism
 - Major Fields of Instructions: International Political Economy, Development Cooperation

- **HOWE, Brendan M.** (Associate Dean, Professor, Ph.D. University of Dublin, Trinity College)
 - Research: International Politics, International Security, Human Security, International Organization, International Governance, Human Rights, Post-Conflict Development
 - Major Fields of Instructions: International Relations, Non-traditional and Human Security

- **KIM, Jasper S.** (Professor, J.D. Rutgers University, School of Law)
 - Research: International Negotiations, International Business Law, International Finance
 - Major Fields of Instructions: International Law

- **LEE, Inpyo** (Professor, Ph.D. Yale University)
 - Research: Macroeconomics, Money and Banking, International Finance, Korean Economy, Economic Education
 - Major Fields of Instructions: International Economics, Korean Economy, Development Cooperation

- **CHO, Kisuk** (Professor, Ph.D. Indiana University)
 - Research: American Politics, International Public Relations, Negotiation and Leadership, Women's Studies
 - Major Fields of Instructions: International Negotiations, International Public Relations, Public Diplomacy, Global Women Leadership

- **CHO, Youngjeen** (Associate Professor, S.J.D. Harvard Law School)
 - Research: International Trade Law, Trade Negotiations, Trade and Development
 - Major Fields of Instructions: International Trade, International Law
- **CHOI, Byung-il** (Professor, Ph.D. Yale University)
 - Research: Negotiations and Conflict Resolution, Trade Policy, International Economy, Political Economy of East Asia, Corporate Policy
 - Major Fields of Instructions: International Negotiations, International Trade
- **KALINOWSKI, Thomas** (Department Chair, Associate Professor, Ph.D. Freie Universitaet Berlin)
 - Research: International Political Economy, Globalization and Development, Political Economy of East Asia
 - Major Fields of Instructions: International Studies
- **Eun Mie Lim** (Ewha-KOICA Program Director, Ph.D. University of Washington)
 - Research: International Development, Gender and Development, ODA, Research Methodology, Migration
 - Major Fields of Instructions: Development Cooperation, Gender and Development
- **Jinhwan Oh** (Associate Professor, Ph.D. Cornell University)
 - Research: Economic Development, International Trade, Development Cooperation, Regional Economics
 - Major Fields of Instructions: International Trade, Economic Development
- **Jennifer S. Oh** (Assistant Professor, Ph.D., Princeton University)
 - Research: East Asian Politics, Comparative Political Economy, Democratic Governance
 - Major Fields of Instructions International Political Economy, Development Cooperation

- **JUN, Hannah (Heekyung)** (Assistant Professor, Ph.D. Ewha Womans University)
 - Research: International Business/Finance, Corporate Governance, Socially Responsible Investing
 - Major Fields of Instructions: International Business, Corporate Governance and Social Responsibility, Financial Analysis and Planning

- **Alex J. (Jiyoung) Kim** (Assistant Professor, Ph.D. Purdue University)
 - Research: Competitive Strategy, Digital Marketing
 - Major Fields of Instructions: Marketing, International Business

- **Ihn-Hwi Park** (Professor, Ph.D. Northwestern University)
 - Research: International Security, East Asian security, Korea-US Relations, US foreign policy, Cold War History
 - Major Fields of Instructions: International Politics

- **WILLOUGHBY, Heather** (Associate Professor, Ph.D. Columbia University)
 - Research: East Asian Culture and Society, Anthropology, Cultural Studies, Korean Traditional and Popular Culture and Music
 - Major Fields of Instructions: International Culture, International Studies

- **Jean S. Kang** (Associate Professor, Ph.D. Harvard University)
 - Research: International Relations, International Political Economy, International Peace and security
 - Major Fields of Instructions: International History & Diplomacy

- **Seok Weon Lee** (Professor, Ph.D. University of Texas at Dallas)
 - Research: Financial Management, Investment Management, Corporate Finance, Risk Management
 - Major Fields of Instructions: Finance

- **Jai S. Mah** (Professor, Ph.D. Brown University)

- Research: Economic Development, International Economics
 - Major Fields of Instructions: International Economics
- **Wonseok Woo** (Associate Professor, Ph.D. State University of New York at Buffalo)
- Research: Strategy Management, International Business
 - Major Fields of Instructions: International Business
- **Hae Lim Cho** (Invited Professor, Ph.D. Ewha Womans University)
- Research: Development Cooperation, Migration and Development, Multiculturalism, Gender and Development
 - Major Fields of Instructions: Development Cooperation, ODA Management and Evaluation, Research Methods and Fieldwork
- **Jang-Hee Yoo** (Professor Emeritus, Ph.D. Texas A&M University-Economics)
- Research: Macroeconomics, Regional Cooperation, International Organizations
- **Hung Chong Kim** (Adjunct Professors, Ph.D., Seoul National University)
- Major Fields of Instructions: Economics
- **Hyekyung Kim** (Invited Professor, M.S. Boston University, Computer Science, M.P.A. Harvard Kennedy School Public Administration)
- Major Fields of Instructions: NGOs, CSOs
- **Hye Yun Park** (Invited Professor, Ph.D. Ewha Womans University)
- Research: Development Cooperation, Political Economy, Sociology
 - Major Fields of Instructions: Sustainable Development, International Organizations, Regional Integration in Europe and Asia
- **Heisoo Shin** (Invited Professor, Ph.D. Rutgers University)
- Major Fields of Instructions: Women's rights.

- **Jie-Ae Sohn** (Invited Professor)

Major Fields of Instructions: Communications, Media and Development

◆ **Campus Map (Dormitories No. 16 ~22, 23)**



2. ACCOMMODATION



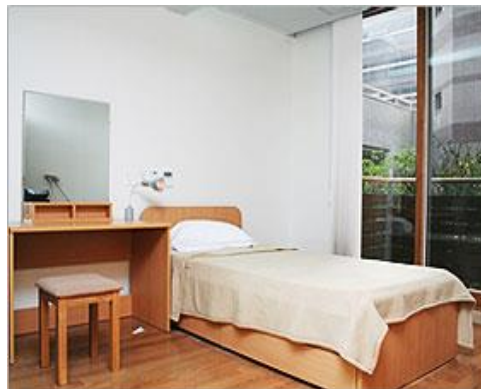
- Ewha Womans University has three types of dormitories: Hanwori Hall for undergraduate students, Graduate Student Dormitory for graduate students and professors, and International House for exchange students and guests. They accommodate 1,600 residents including foreign students and professors from 50 countries all over the world. Graduate Student Dormitory will be arranged for Ewha-KOICA students.

- Ewha Graduate Student Dormitory, designed by Korea's top-notch architect Kim Won, has an easy access from everywhere on campus and a renowned for its beautiful outlook. It serves as a "second-home"

to 460 graduate students, international students, students in language programs, and professors & researchers from all over the world.

- Along with the Ewha-Samsung International House (dormitory for exchange students) adjacent to it, Ewha Graduate Student Dormitory makes the little "global village of Ewha." Numerous kinds of foreign language can be heard in this area- from English, French, Chinese to Japanese and many more Asian, African, European languages.

- The dormitory, established in September 2006 to enhance the globalization of Ewha, consists of two 9-story buildings which sum up to 16,597 m² gross area. It has an inner court with two beautiful lawns that provides a rest for all residents. Especially, 12 glass lighting devices create a romantic atmosphere after sunset.



- 68 single rooms, 180 twin rooms for graduate students, 22 rooms for professors or researchers, In total, 460 residents can be accommodated. Each room is equipped with bathroom and internet service.
- Subsidiary facilities such as computer room, seminar rooms, reading rooms, prayer room, lounge, fitness room, laundry & ironing room, and kitchenettes provide a perfect convenience for residents. Events on birthdays, Easter, Thanksgiving are great social offerings of dormitory life. With its excellent facility, the dormitory plays an important role in promoting intercultural communication and Ewha spirit within residents.
- Ewah Graduate Student Dormitory Website: <http://dmtrygr.ewha.ac.kr/>

3. OTHER INFORMATION

A. Facilities

1) The Central Library

- The Central Library is acclaimed to be one of the most renowned libraries in Korea. The seven-story building has a capacity of 4,000 seats and 1.3 million volumes, 9,800 periodicals, a digital library and a computerized catalogue system that can be accessed on-line at <http://lib.ewha.ac.kr/>.
- The Ewha library system, including branch libraries (engineering, law, theology, music, and medical) has developed in-depth subject services to provide subject guides, research instructions and information search services for individuals or groups.
- Furthermore, in collaboration with the Ewha community and other academic libraries and through the effective collection and use of vast academic resources, Ewha library strives to optimize research activities and academic outcomes.
- Students can borrow and reserve library books online as well. You may login to the Library website with your student ID and the initial Password (date of birth).



Only checked-out books can leave the library. If you violate the regulations, your borrowing privileges may be suspended for six months or revoked entirely.

- Opening Hours: Weekdays 09:00- 21:00/Saturdays 09:00- 15:00
- Closed on Sundays and Public Holidays
- Reading Rooms: 24 hours
(Entrance and exit restricted from 00:00~05:00)
- Facilities
: Computer Lab: 1st floor

• Use of Wi-Fi

- Wi-Fi is available in the whole campus of Ewha for currently enrolled students by following steps.
 1. Choose Wi-Fi.
 2. Choose SSID (Wi-Fi connect EWAH).
 3. Enter ID & Password. (ID: Portal ID, Password: Portal Password)
 4. Set up a wireless networks.
- Contact/inquiry: IT One-Stop Service Center, Office of Information & Communications (82-2-3277-4777)

• Printer

- Location: Computer Lab (1st floor, 4 printers), Information Room (2nd floor, 4 printers), branch libraries (Engineering, Law, Theological, Music, Medical Libraries) and each computer lab.
- Students have to use a printer card (Korean Won [KRW] 5,000) to print. KRW 50 per page.
- A printer card is available at the store located in the basement of the library.

• Photocopiers

- Location: Copy Room in the basement, and 2nd to 5th floors
- Students need to use a copy card (KRW 5,000) to copy. KRW 20 per page.
- A copy card is available at the store located in the basement of the library or copy room on the 4th floor.

- **Scanner**

- Location: Computer Lab (1st floor)
- Free of charge

2) Cafeterias and Snack Bars

- There are four different cafeterias on campus. They all serve different menus and the prices differ slightly from one another. Prices normally range from 1,000 won to 3,000 won per person but may further vary depending on the menu of the day.
 - **Student Cafeteria:** Located in the Human Ecology Building (생활관, #46 on the campus map), this cafeteria offers various kinds of menus for the students. This is the school's main cafeteria, offering 1,500 seats for students.
 - **Dormitory Cafeteria:** Located in the dormitory, this particular cafeteria gives you a choice between Korean style and western style food. The food tickets can be purchased at the kiosk nearby.
 - **Helen Hall Cafeteria:** Located in the Helen Hall (헬렌관, #14 on the campus map), you will find it right across the main entrance of the Centennial Library.
 - **Lounge O:** Located outside the Helen Hall, this campus café serves soft beverages and snacks such as donuts, pastas, and sandwiches.
 - **Dr. Robbin:** Located on the 4th basement level of ECC, this campus café serves soft beverages and snacks such as donuts, pastas, and sandwiches.
 - **Food Empire:** Located on the 4th basement level of ECC, this campus food court serves a various sort of food.
 - **Cathay Ho:** Located on the 4th basement level of ECC, this Chinese restaurant serves soft beverages and snacks such as donuts, pastas, and sandwiches.
 - **International Restaurants near campus:** There are various multicultural restaurants of other countries near the campus.

3) Computer Lab

- Furthermore, in collaboration with the Ewha community and other academic libraries and through the effective collection and use of vast academic resources, Ewha library strives to optimize research activities and academic outcomes.

- Ewha has many computer labs that are available for your needs. In Korea, IBM is more commonly used than Macintosh (Business hours: Weekdays 09:00 – 21:00)
- Location
 - International Education Building, Rm. 901
 - Hak-gwan, Rm. 401
 - Alumnae Building, Rm. 221
 - Law Building, Rm. 345
 - Science Building B, Rm. 207
 - Asan Engineering Building, Rm. 125-1
 - Medical Science Building, Rm. 711
 - Ewha-POSCO Hall, Rm. B154
 - Ewha-Shinsegae Building, Rm. B118
 - Helen Hall, Rm. 303
 - Music Building, Rm. 329
 - Art & Design Building A, Rm. 417
 - Physical Education Building B, Rm. 107
 - Physical Education Building C, Rm. 202
 - Student Union Building, Rm. 110-2
 - Education Building A, Rm. 207
 - Education Building B, Rm. 155
 - Ewha Central Library, Rm. 101
 - Ewha Campus Complex (ECC), Rm. B204, Rm. B341
 - HanWoori Hall Dormitory,
- IT One-Stop Service Center: Located in ECC (Room #B205), the IT One-Stop Service Center offers technical services and advice, and students may borrow lap tops for a daily use.
 - Service & Advice: 09:00 to 17:00, Mon-Fri (Lunch Hour: 12:00-13:00)
 - Laptop Rental: 07:30 to 19:00, Mon-Fri (Lunch Hour: 12:00-13:00)
- Laptop Rental is available for enrolled students

- Rental period: One day, one time, up to five hours (can be limited to those with reservations when there are too many applicants.)
 - How to Apply: EUREKA → My Eureka → IT → Apply for IT equipment rental
 - How to check-out: After requesting a rental, users can check-out the laptop computer from IT One-Stop Service Center after showing ID.
 - Check-out / return at IT One-Stop Service Center (ECC B205, 82-2-3277-4777)
 - Service hours: Mon-Fri, 08:40-18:30 (09:00-17:00 during the vacation)
 - Help Desk (02-3277-3131, infoserv@ewha.ac.kr)
-
- Printing Cards: Students can purchase a printing card (5,000 won) at a kiosk in the Library, POSCO Hall, Student Union Building, other stores on campus and IEB, etc. You may purchase Printing Cards for the use of the IEB computer lab, on the 9th floor of the International Education Building, from the GSIS office (#1104).
 - Photocopier: To use a photocopier, Students need to buy a copy card (5,000 won) at a kiosk. To operate the copier, put the card into a slot, and then press the manual start button.

4) School Supplies

- Location: B1 of Student Union. (#31 on the campus map)
- What you can buy: stationary, toiletries, snacks
- Business hours
 - Weekdays: 09:00-19:00
 - Saturdays: 09:00-14:00- Rental period: One day, one time, up to five hours (can be limited to those with reservations when there are too many applicants.)

5) Post Office

- Location: B1 level of the Alumnae Center (#45 on the campus map)
- Service: General mailing services including mail, parcel, registration, domestic/international EMS, and certain banking services.
- Business Hours: Weekdays 9:00 a.m.-18:00 p.m. Saturday 9:00 a.m.-12:00 p.m.
- For more information, visit <http://www.koreapost.go.kr>.

6) Sports Facilities

▪ Indoor Swimming Pool



- There are various sports facilities on Ewha campus, which students can use for free or at a low fee. Located in the basement of the Alumnae Building (#42 on the campus map), the pool is used for both class and leisure activities. Personal

and group lessons are available at a low fee. Anyone can swim in the pool by paying the admission fee of 5000 WON/1 entry. It is open from 07:00 to 18:00 for more information about lessons and monthly schedules, please contact (02) 3277-2555.

▪ Fitness Room (Yoga, Jazz, Sports dance, etc.)

- It is located in the basement of the Student Union Building (#38 on the campus map). In the fitness room, yoga, and various types of dances are taught and practiced. Summer School students can sign up for programs at the fitness room during mid-late June. For detailed information on lessons and monthly schedule, please contact (02) 3277-2938.

▪ Tennis Court (#60 on campus map)

- It is located in the basement of the Student Union Building (#38 on the campus map). In the fitness room, yoga, and various types of dances are taught and practiced. Summer School students can sign up for programs at the fitness room during mid-late June. For detailed information on lessons and monthly schedule, please contact (02) 3277-2938.



▪ Squash

- There are two squash courts in the second basement level of the Student Union Building (#31 on the campus map). For detailed information on lessons and monthly schedule, contact (02) 3277-2938, 3714.

7) ECC (Ewha Campus Complex) Facilities

- With an unusual design that makes underground seem like overground, ECC goes beyond being a building to be a new landscape that harmonizes with the natural background. The ECC project started with the natural background. The ECC project started with the idea that students needed the best campus environment where they could spend more time.
- Service Provided: Students Service Center, Career Development Center/ Ewha Institute for Leadership Development, Office of Registration, Office of International Affairs, Global Service Center, Lecture rooms, 3 Reading Rooms with 100 seats in total, 41 Seminar Rooms, U-classroom, lecture theater, Art film theater with 2 screens and 272 seats, Performing arts theater with 716 seats etc.

***Shinhan Bank**



[Bank]



[ATM]

- Location: In front of the Gate 3 ECC (B405)
- Contact: (02) 3277-4899
- Business hours: 09:00-16:00
- Money transfer from overseas can be made freely up to US\$20,000 per day. For the exceeding amount, the bank has to report the activity to the government. Also, you need to consult your home bank first if you intend to use their cash (debit) card in Korea.
- Foreign currency and traveler's checks can be exchanged into Korean currency (won) in banks at the airport, foreign exchange banks, and other authorized money exchange places including the on-campus Shinhan Bank. The services are for all residents living in Korea so the initial call pickup will be done in Korean. If you request for English translation, a translator will be provided (contact time needed).

***Linko (School Supplies)**

- Location: ECC Gate 3, turn right (B408)
- Delivery Service (Only for purchase over 30,000KRW)
- Contact: (02)3148-6782
- Business hours: 09:00-18:00 (weekdays), 09:00-13:00 (Saturday),
Sunday & holiday (closed)

*** KYOBO Bookstore**

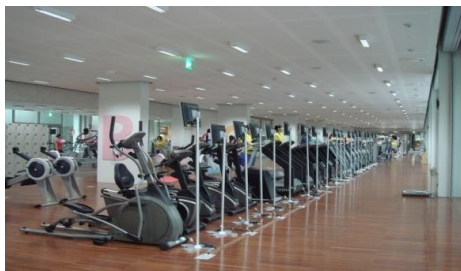
- Location: ECC Gate 3, turn right (B409)
- Contact: (02)3277-1641
- Business hours: 8:30-20:00
- All kinds of books are available.

*** Fitness Center**

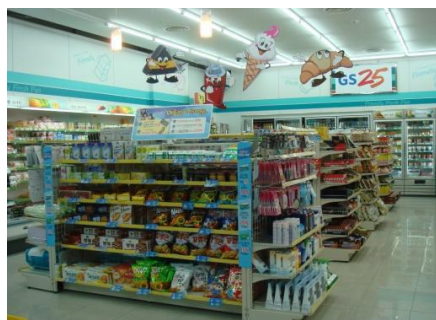
- Location: ECC Gate 4, turn right (B422)
- Programs: Health, GX class. They will provide free sports clothes and towel, but you have to return them after usage.
- Contact: (02)3277-2559
- Business hours:

[Mar-Nov] 06:30-21:30 (Mon-Fri) 09:00 – 17:00 (Sat)

[Dec-Feb] 07:00-20:30 (Mon-Fri) 09:00 – 17:00 (Sat) Sunday & Holiday (Closed)

***GS25 Convenience Store**

- Location: ECC Gate 4 (B420)
- Sale: Drinks, food,
other commodities
- Contact: (02) 3277-4959



- Business hours: 07:00-22:00

***Optical Shop**

- Location: ECC (B418)
- Services: Glasses, Contact lenses
- Contact: (02) 3277-4903
- Business hours:

09:00-19:30 (Mon-Fri), 09:00-18:00 (Sat),
Sunday & Holiday (closed)



***Ewha POD Center**



- Location: ECC Gate 4, turn left (B419)
- Services: Copy, Print, Fax, Scan
- Contact: (02) 3277-4988
- Business hours: 09:00-18:00 (Mon-Fri),
09:00-13:00 (Sat)

***IT Service Center**

- Location: ECC Gate 9 and turn left (B205)
- Services: wireless access, laptop rental
- Business hours: 09:00-17:00 (Mon-Fri)
- Contact: (02)3277-4777

***Computer Lab**

- Location: ECC Gate 7 and turn left (B204)
- 60 PCs, Printer, Scanner, Copy machine
- Business hours: 09:00-21:00

8) Other Campus Facilities

- The Student Union Building has computer lab, convenience store, school supplies store, Ewha merchandise store, cosmetics shop, bakery, coffee shop, and more.
- The recreational hall on the first basement level of the Student Union Hall offers classes in aerobics, dance, yoga, squash and jazz dance at a student bargain cost.
- The Ewha-POSCO Hall has a kiosk, stationary store, snack bar and computer labs.

Health Care

1) Student health center in campus

- The University Health Center is a student welfare organization that provides student with health and medical care services to keep the campus healthy. Services provided include health care, medical treatment, environmental hygiene, and health education.
- Ewha GSIS students are given immediately upon the payment of a Student Health Fee (KRW 23,200 per semester as of 2015).
- Members are entitled to use the health and medical care services explained below, which are offered by the Center for free or for a nominal fee.
- Phone number: 02-3277-3181
- Hours: Monday to Friday, 9:00-17:00
- Location: Alumni building 2nd Floor
- Website: <http://euhs.ewha.ac.kr/>

2) Off-campus general hospitals near Ewha

* Ewha Mokdong Hospital

- Phone number for foreigners: 02-2650-5890
- Mobile Number: 010-7739-5890
- E-mail: 41683@eumc.co.kr
- Website: <http://eng.eumc.ac.kr/>
- Location: Use bus number 163 at the Ewha front gate (Ewha Womans University→ Sinchon Rotary→ Ewha Womans University Mokdong Hospital)

*** Shinchon Severance Hospital (Yonsei University College of Medicine)**

- Phone number for foreigners: 02-2228-5800
- Mobile Number: 010-9948-0983
- Email: ihcc@yuhs.ac
- Website <http://www.yuhs.or.kr/en/>
- Hours: Morning 10:00-12:00; Afternoon 14:00-17:00
Saturday- 10:00-12:00
- Location: From Ewha back gate or Ewha Shinsegae building, you can see Severance Hospital across the street and it takes within 10 minutes by foot.

*** Seran Hospital**

- Phone: 1577-1987, 02-737-0181
- Website: <http://www.seran.co.kr/index.asp> (English version not provided yet)
- Hours: Weekdays- Morning 10:00-12:00; Afternoon 13:30-18:00
- Saturdays- Morning 09:00-12:30; Afternoon- Treatment at the emergency center
- Specification: Recommended when physical examination is required (relatively low expense compared to University hospitals)
- Location: Subway line number 3, Dongnimmun Station; Exit number

3) Off-campus clinics near Ewha

*** Dentist: Ewha-Seoul Dentist (이화서울치과)**

- Phone: 02-362-2804
- Website: <http://www.신촌임플란트.kr/>
- Hours: Morning 10:00-12:30; Afternoon 14:00-18:30
- Saturdays 10:00-13:00
- Location: About five-minute walk from the Ewha front gate, 3rd floor of Baskin Robbins building



*** Department of internal medicine: Dr. Han's Clinic (한대석 내과)**

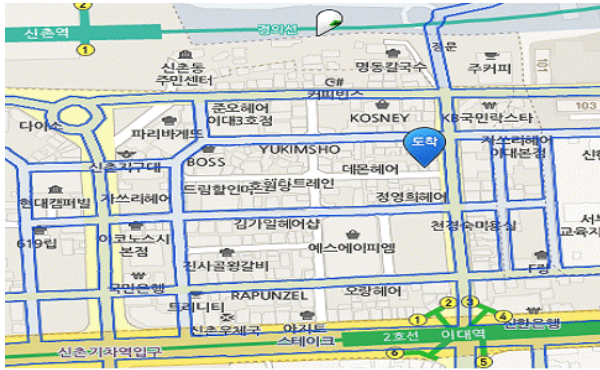
- Phone: 02-312-7400
- Website: <http://한대석신장클리닉.com>(Only in Korean)
- Hours: Morning 9:30~13:00, Afternoon 14:30~18:30 (*Thursday 9:30~13:00)
Saturdays 9:30-13:00
- Location: Near Ewha station exit number 4, 3rd and 4th floor of Yoo-inn building (Shinhan Bank on the 1st floor)



*** ENT Clinic (Ear, Nose, Throat hospital) : Shinchon Yonsei ENT hospital
(신촌연세이비인후과)**

- Phone: 02-332-0967
- Website: <http://www.yonseient.co.kr/index.asp>
- Hours: Morning 9:00~13:00, Afternoon 14:00~18:30, Saturdays 9:00-13:00

- Location: Near the Ewha subway station Exit number 5, 4th Floor of Daehyun Building.



*** Eye Clinic: Oseo Eye Clinic (오세오 안과)**

- Phone: 02-702-5355
- Website: <http://www.oseoi.com> (Only in Korean)
- Hours: Weekdays 9:30-13:00, Afternoon 14:00-18:30, Saturdays 9:30-13:00
- Location: 1 minute walk from Ewha subway station Exit number 6, 2nd floor of Jung Woo Building



*** Orthopedics: We Kwang Min Orthopedics (위광민 정형외과)**

- Phone: 02-701-3100
- Hours: Weekdays- 9:00-6:10, Saturdays- 9:00-12:00
- Specification: Doctor speaks fluent English

- Location: Five-minute walk from Shinchon train station, 3rd floor of Camp 21 Building (Opposite to the Shinchon Post Office Building)



4) Pharmacies near Ewha

* Yeonhee With-pharm (연희위드팜)

- Pharmacy at the Ewha back gate that provides language services for international students.
- Location: Across the street of Ewha back gate (next to Paris Baguette)

* Han Sarang Onnuri Pharmacy (한사랑온누리 약국)

- Phone: 02-364-5455
- Open Hours: 9:00-21:00
- Location: Right in front of the Ewha Station Exit number 4

Part VI

SUPPORT SERVICE

1. TRAVEL TO KOREA

A. KOICA arranges and pays the participant to travel to and from Korea. The participant is to travel by the most direct route between Incheon International Airport and a main international airport in the participant's home country. KOICA will cover economy class, round-trip airfare.

B. If a participant wants to change the flight itineraries, they should pay the additional airfare. The participant is responsible for the issuance of an appropriate visa (which must be the 'Study Abroad Visa [D-2]) necessary for this Scholarship Program. Should the participant be unable to get the appropriate visa before the date of entrance, KOICA is unable to provide any assistance and, if it proves necessary, participants may have to return to their respective countries to get the visa issued at their own expense.

2. EXPENSES FOR STUDY AND LIVING

The following expenses will be covered by KOICA during the participant's stay in Korea.

- A. Tuition fee
- B. Accommodation sharing a room basis (Twin-room dormitory of training institute)
- C. Living & Meal allowance KRW 999,000 per month (this includes meal, books and study supplies if needed.)
- D. Overseas travel insurance, etc.
- E. In addition, participants may be invited to a special event organized by KOICA with the aim of promoting friendship among each other and understanding about Korea during the program.

3. INSURANCE

- Participants who have entered Korea have been covered by “New group Casualty insurance” policy in case of illness or accident.
 - ※ The insurance coverage period is from the time of arrival in Korea to the time of departure.
 - ※ We encourage you to read about the coverage of insurance and deductibles carefully.
- According to Korea's insurance system, 20% of medical expenses must be paid by participants as mandatory deductibles by law.
 - KOICA is encouraging the participants to get National Health Insurance, which can reduce the deductibles by up to 80%.
- Medical expenses may be expensive due to the obligation to pay these deductibles.
- Medical expenses for previous illness, pregnancy, mental illness, etc. will not be reimbursed.

During the program, participants will be covered by the “New group accident insurance.” The insurance covers expenses for medical treatment and hospital care caused by diseases or accidents within the scope and limit of insurance coverage. Participants should first pay by themselves and then be reimbursed for the expenses later, on the condition that the case falls under the coverage of the insurance.

According to Korea's insurance system, at least 20% of medical expenses are mandatory deductibles by law; which must be covered by the participants themselves. Therefore, we would like to recommend for those who are under medical treatment due to illness, those who need regular medical examinations, and those who are receiving outpatient treatment for tooth problems such as cavities to consult with their doctors and apply to the Master's Degree Program after they are completely cured.

- Limit of Coverage & Deductibles

Collateral	Limits of coverage	Note
Death	100,000,000	-
Permanent disability by accident	100,000,000	-
Hospitalization	50,000,000	Deductibles

Outpatient medical expenses	250,000/ day	Deductibles
Prescription fee	50,000/ day	Deductibles
Liability	10,000,000	KRW 200,000 Deductibles
Acute myocardial infarction treatment fee	10,000,000	Once
Stroke treatment fee	10,000,000	Once
Special terms for persons killed or wounded for a righteous cause	100,000,000	

- ※ Limited to cases of injury and illness
- ※ Medical checkup at the participant's option and the fee for a medical certificate and diseases caused by pre-existing medical conditions, etc. are not covered by the insurance (Refer below to the category not covered by the insurance).
- ※ The insurance coverage is limited to the treatment incurred within Korea.
- ※ The insurance shall cover the medical expenses at actual cost within the limit of the medical insurance subscription amount per case (for details, refer to the insurance policy)

. Deductibles

* Outpatients and prescription fee

Classification	A	B	Deductibles
Clinic	10,000	20%	The larger amount between A and B
Hospital	15,000	20%	The larger amount between A and B
University hospital, level 3 hospital	20,000	20%	The larger amount between A and B
Prescription fee	8,000	20%	The larger amount between A and B

* Hospitalization fee

Classification	Deductibles
Hospitalization	20%

- Procedures, Services and Diseases Not Covered by the Insurance

- * Diseases that participants already had before arrival in Korea
- * Medical check-up, vaccination, nutritional supplements, and tonic medicines
- * Dental care and Oriental (Chinese) medicine: Uninsured items and prosthetic dentistry Hospital treatment
- * Fees for issue of certificates
- * Costs that are not related to treatments and medical check-up costs that are not related to a doctor's diagnosis.
- * Orthopedics
- * Equipment and consumables (e.g., wristbands and cast shoes)
- * Mental disease and behavior disorder
- * Congenital cerebropathy
- * Herbal remedies
- * Obesity
- * Urinary diseases: Hematuria and urinary incontinence
- * Diseases of the rectum and anus
- * Tiredness and fatigue
- * Freckles, hirsutism, atrichia, canities, mole, wart, pimple, and skin ailments such as hair loss due to aging
- * Medical expenses caused by treatments for enhancing appearance (e.g., double-eyelid surgery)
- ※ Detailed information will be provided upon arrival

- National Health Insurance

According to Korea's insurance system, at least 20% of medical expenses must be paid by participants as mandatory deductibles by law. KOICA is encouraging the participants to get National Health Insurance, which can reduce the deductibles by up to 80%. If you have an illness that you have suffered in the past, or still ill (previous illness), you are recommended to join the National Health Insurance. If you are not covered by national health insurance, high medical costs may arise.

□ **Dentistry**

- Korean medical expenses of dental system diseases are very expensive
- Medical expenses for dental diseases are not reimbursed

Korean medical expenses of dental system diseases are very expensive. However, dental treatment costs are usually not covered by insurance and often exceed the cost of living. Therefore, it is recommended that you check your tooth condition beforehand and finish both tooth check-up and medical treatment before entering Korea.

※ For dental care, no costs are covered by KOICA or “New group accident insurance.”

Part VII**REGULATIONS****1. ACADEMIC REGULATIONS****1) KOICA-EWHA MASTER'S PROGRAM REGULATIONS****A. Coursework**

- Four semesters of full time registration is mandatory. A minimum of 41 credits in total are required to graduate (38 credits of coursework and 3 credits of thesis writing).
- In order to write a master's thesis in the fourth semester, she must fulfill 35 credits by the end of her third semester.
- Students must complete all the required courses to graduate.
- A student with a GPA below 2.50 (on a 4.3 scale) for two consecutive semesters will be automatically expelled from the program.
- Minimum GPA for Functional Concentration Requirements courses is B0 (3.0)

B. Thesis Advisor

- Students are advised to choose their thesis advisor at the early stage of the master's program. Thesis evaluation committee (3 faculty members including the thesis advisor) is organized by the Ewha-KOCA Academic Committee

C. Degree conferment

- Students who pass the final thesis evaluation and complete all the requirements for graduation will be conferred a Master's Degree.

D. Research Ethics Courses

- All thesis writing students should take Research Ethics course online before completing their comprehensive examination. (Mandatory Course: Research Misconduct).

E. The Honor Code

(Ewha Womans University Graduate School of International Studies)

- In keeping with the long tradition of Ewha Womans University as a global leader among its domestic and international peers, the Graduate School of International Studies of Ewha Womans University has adopted the Honor Code as an expression of its commitment to educating leaders in an environment of the highest and best ethical standards. All GSIS students including Ewha-KOICA students must accept responsibility to maintain the Honor Code at all times as follows:

1. *As a student of Ewha Womans University, I will establish and maintain the highest standards in academic work.*
2. *I will not lie, cheat, or steal in any academic endeavor, nor will I accept the actions of those who do. This means that I will:*
 - *not give or receive aid in examinations;*
 - *not give or receive un-permitted aid in any work used as the basis of grading;*
 - *not engage in plagiarism.*
 - *actively encourage others to uphold the spirit and letter of this Honor Code.*
3. *I commit myself to act honestly, responsibly and honorably in all my activities.*

*** Procedures**

- **Official Discipline:** Faculty members and the Dean of GSIS will determine disciplinary measures on a case-by-case basis. Standard penalties for a first offense may include: failure or no credit for the course in which the violation occurred, hours of community service, notice to the student's family, a one-semester suspension from the University and/or a combination of these measures. Multiple violations usually will result in expulsion from the University.
- **Student Reporting:** A student who has direct knowledge of a potential case of academic dishonesty is required to:
 - . Provide a signed, written statement of the observed behavior to the appropriate faculty member and/or to the Dean promptly (guideline: within two weeks of the alleged occurrence); and
 - . Provide the name or identity of the person alleged to have committed the violation.

. Students who knowingly do not fulfill this reporting obligation are subject to sanctions. A reporting student's identity may be kept confidential by the faculty and/or Dean at the student's request. A violating student's confession of an Honor Code violation will be considered as a positive factor in the determination of disciplinary action.

2) Dormitory Policy

- A. Applicants below will be disqualified for residence in Dormitory.
 - a. Applicants who have previously been evicted from Dormitory.
 - b. Applicants who have a contagious illness.
 - c. Applicants who are not enrolled in graduate courses (i.e taking a leave of absence from school).
 - d. Other applicants who are disqualified by the Director of Dormitory for potential misconduct and/or violation of the dormitory rules.
- B. Residence Period
 - Residence Period will be within the academic term in which the resident is enrolled as a full-time student. However, an additional term may be granted if the resident is enrolled for thesis/dissertation semester during doctoral courses.
- C. Check out
 - Borrowed dormitory items should be returned before check out. The check-out form should be turned in to the Director of Dormitory.
 - Security deposit may not be requested unless all of the borrowed dormitory items have been returned. Dormitory has the right to retain deposit if it is not requested by the last fiscal day of the academic year.
 - Dormitory staff will inspect the rooms prior to check out, and the rooms should be in the original condition from moving in.
- D. Security
 - Residents should not have any visitors in the rooms without the permission from the Director. Visitors are prohibited to stay overnight. Violation of this regulation may result in eviction

E. Visits

- Visitors are welcome in the guest area until 10:00 pm.

F. Cleaning and fire precaution

- Residents should be responsible for keeping their rooms clean and precaution to prevent fires.
- Negligence of these responsibilities may be grounds for demerits.

G. Advertisements or flier distribution

- Only those advertisements approved by Dormitory office may be posted on designated boards. However, simple personal notes to and from friends among the residents can be freely posted.

H. Indemnification

- Residents will be charged for any damage and/or loss of Dormitory property and room amenities.

I. Disciplinary action

- The Director of the Dormitory may give warnings or order evictions for the following violations:
 - a. Warnings: if the severity of the violation is deemed grave, the demerit points may be imposed with warnings.
 - b. Eviction: If a resident's demerits exceed 10 points according to the demerit guidelines, this may result in eviction.

The following conducts may also result in eviction.

- (a) Status found to be ineligible after moving in.
- (b) Failure to pay all fees.
- (c) Violation of Article 12: Residents should not have any visitors in the rooms without the permission from the Director. Visitors are prohibited to stay overnight. Violation of this regulation may result in eviction.
- (d) Other serious misconducts enough to be evicted.

2. PARTICIPANT'S RESPONSIBILITIES

Participants are required

- To take up the scholarship in the academic year for which it is offered (deferral is not allowed).
- To follow the training program to the best of their ability and abide by the rules of the training institute and KOICA.
- To reside in the accommodation designated by the training institute for the duration of the course except for holidays or temporary leave.
- To maintain an appropriate study load and achieve satisfactory academic progress for the course. If the participant fails to attain certain grades required by the university, his or her status as a KOICA program participant may be suspended.
- To participate in all activities associated with the approved course of study including all lectures and tutorials, submit all work required for the course and sit for examinations unless approved otherwise by the training institute in advance.
- To notify the training institute in advance and get an approval for temporary leave.
- To advise KOICA and the training institute of any personal or family circumstances such as health problems or family problems which may seriously affect their study.
- To refrain from engaging in political activities or any form of employment for profit or gain.
- To agree to KOICA collecting information concerning them and passing that information onto other relevant parties, if necessary.
- To return to their home country upon completion of their training program.
- Not to extend the length of their training program or stay for personal convenience; neither KOICA nor the university will provide any assistance and be responsible for the extension of their stay.

3. WITHDRAWALS

- In principle, a participant is not allowed to withdraw from the course at her own option once the course starts.
- A participant may withdraw with valid personal or home country's reasons (such as health or work issues) when acceptable to KOICA.
In this case, she is not allowed to re-apply for KOICA's scholarship program for the next two years after the withdrawal.
- If a participant fails to attain certain grades required by the training institute, she may be forced to withdraw and return home upon withdrawal.
- In this case, she is not allowed to re-apply for KOICA's scholarship program.
- A participant who has withdrawn is not allowed to re-apply for KOICA's scholarship program for the next two years after the withdrawal.
- The participant who withdraws must return to the training institute the living allowance she has already received for the remaining period from the date of departure from Korea.

4. TEMPORARY LEAVE

- Participants can take a temporary leave **during the school vacation** (to the participants' home country or for a trip abroad) on the condition that the trip does not affect their schoolwork and as long as they get a permission from the university in advance.
- KOICA and the university will not pay airfare for the trip **and his or her living allowance will be suspended from the day of departure to the day of return during temporary leave.**
- If the participant is found to have made an unreported temporary visit to her home country or traveled to other countries or **made a trip despite the university's disapproval**, she may be suspended from the KOICA scholarship.

5. ACCOMPANYING OR INVITING FAMILY

- As KOICA's Scholarship Program is a very intensive program, which requires full commitment and concentrated effort for study, **participants CAN NOT bring any family members.**
- KOICA does not provide any financial or other administrative support for the dependents of the participants. Participants must cover all the relevant expenses such as airfare, accommodation, living cost, visa fee, insurance, etc, of their family. The safety and security of their family is also the participant's responsibility..
- If a participant invites family members, one must take a full responsibility related to their family members travel to and stay in Korea including administrative and financial support as well as legal matters in Korea. The participant is required to sign and submit the Written Pledge with supporting documents by acknowledging their responsibility and conditions of bringing their family members in Korea in advance. A copy of the Written Pledge is available at University Office.

6. OTHERS

- KOICA will assume any responsibility only within the limit and scope of the insurance for participants.
- KOICA is not liable for any damage or loss of the participant's personal property.
- KOICA will not assume any responsibility for illness, injury, or death of the participants arising from extracurricular activities, willful misconduct, or undisclosed pre-existing medical conditions.
- If the participants break any of the rules of KOICA and the training institute during their stay in Korea, their status as a KOICA program participant may be suspended.

Part VIII

CONTACTS

1. CONTACT INFORMATION

1) Korea International Cooperation Agency (KOICA)

· **Program Manager: Ms. Minjeong LEE**

- Phone: +82-31-740-0582
- Fax: +82-31-740-0595
- E-mail: nicemj@koica.go.kr
- Homepage: <http://www.koica.go.kr>

· **Program Coordinator: Ms. Hoomi LEE**

- Phone: +82-31-777-2645
- Fax: +82-31-777-2680
- E-mail: hoomi@global-inepa.org

2) Graduate School of International Studies (GSIS), Ewha Womans University

· **Training Coordinator: Ms. Alicia KIM**

- Phone: +82-2-3277-3659
- Fax: +82-2-365-0942
- E-Mail: ewhakoica@ewha.ac.kr
- Home page: <http://gsis.ewha.ac.kr>
- Address: #1101 Int'l Education Bldg., Ewha Womans University, Ewhayeodae-gil 52, Seodaemun-gu, Seoul, 120-750, Republic of Korea

Appendix 1.

KOICA FELLOWSHIP PROGRAM (CIAT)

KOICA has launched a brand-new name for the KOICA Fellowship Program in order to more effectively raise awareness about the program among the public and its partner countries.



In English, CIAT stands for Capacity Improvement and Advancement for Tomorrow and in Korean it means “seed (씨앗)” with hopes to contributing in the capacity development of individual fellows as well as the organizations and countries to which they belong.

The CIAT Program provides participants with opportunities to gain first-hand knowledge of Korea’s development experience. The programs are designed to enable participants to apply what they have learned for the development of their home countries. Since 1991, KOICA has offered about 4,255 courses to more than 69,981 participants from 172 countries.

Appendix 2.

KOICA FELLOWSHIP COMMUNITY

The Fellows' Facebook is a place for fellows to ask questions and write comments on KOICA fellowship programs. So, if you have questions regarding our program, please feel free to join our Facebook community.



facebook.com/koica.icc

Appendix 3.

INFORMATION ON DIRECTION TO KOICA ICC

- **Route:** Incheon International Airport → Korea City Airport, Logis & Terminal(CALT) → KOICA International Cooperation Center (ICC)
- **Arrival at Incheon International Airport** (<http://www.airport.kr>)

Flow:

- ▶ Fill out Arrival Card (or Immigration Card), Customs Declaration Form, Quarantine Questionnaire (on board)
- ▶ Quarantine including animals and plants (on 2nd Floor)
- ▶ Present your Arrival Card, Passport and other necessary document to Passport Control
- ▶ Claim baggage on 1st Floor
- ▶ Customs Clearance
- ▶ Pass an Arrival Gate
- ▶ Go to the KOICA Counter, which is located between Exit 1~2

• **KOICA Counter at Incheon International Airport**



Location : Next to Exit 1 on the 1st floor (No.9-10)
 Tel. : 82-32-743-5904
 Mobile : 82-(0)10-9925-5901
 Contact : **Ms. Jin-Young YOON**

- After passing through Customs Declaration, please go to the KOICA Counter (located between exit 1~2) at Incheon Airport. At the KOICA Counter, you can get detailed information about how to get to KOICA International Cooperation Center (ICC) and purchase limousine bus ticket for City Airport, Logis & Travel (CALT).
- All the KOICA staff at the Incheon Airport wears nametags or has signs for indication. If you cannot meet the KOICA staff at the counter, please purchase a

APPENDIX 3. INFORMATION ON DIRECTION TO KOICA ICC

limousine bus ticket from the bus ticket counter (located on the 1st Floor), and go to CALT Bus Stop No. 4A (or 10B). Please find the bus number 6103 and present your ticket to the bus driver. From Incheon Airport to CALT, the approximate time for travel will be between 70 to 90 minutes. When you arrive at CALT, you will find another KOICA staff who will help you reach the KOICA ICC. KOICA will reimburse the limousine bus fare when you arrive at KOICA ICC. Also, please be aware that there may be illegal taxis at the airport. Even if they approach you first, please do not take illegal taxis and check to see if they are KOICA staff.

"Please remember to read the Fellows' Guidebook.

It is available from the Korean Embassy or KOICA Overseas Office in your country and provides valuable information regarding KOICA programs, allowances, expenses, regulations, preparations for departure and etc."

*The

schedule in PI (Program Information) can be changeable
according to the KOICA and Ewha GSIS Schedule.